

FOR SALE

**Wild Turkey Lane
Wildwood, Mo. 63069**

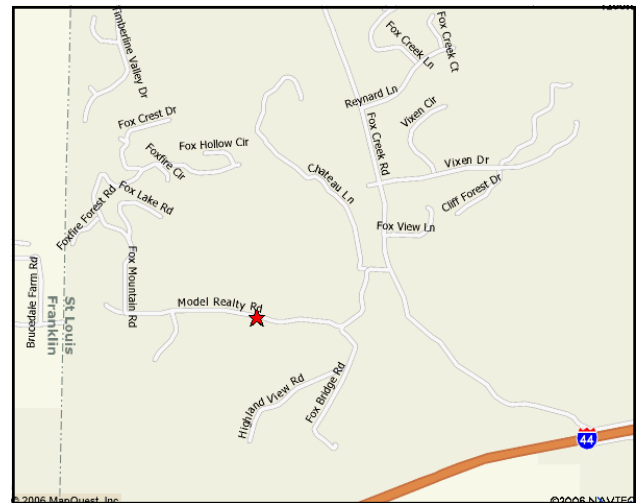


**SALE PRICE: \$329,000 -
\$375,000**

**8 LOT SUBDIVISION
ONLY 4 LOTS REMAINING
6± ACRES TO 18± ACRES LOTS
ROCKWOOD SCHOOLS**

DIRECTIONS:

From Hwy 100 west of Hwy 109 to left on Fox Creek Rd. to right on Model Realty Rd. to sign on right or I-44 to the Six Flags exit turn right and then left on Fox Creek Rd. to left on Model Realty Rd.



Contact:

Matt Shaw

(314)-503-4872

Matt@shawrealtors.com



200 Long Road ♦ Suite 160 ♦ Chesterfield, Missouri 63005

Office: (636) 532-1922 ♦ Fax: (636) 532-0222 ♦ info@shawrealtors.com ♦ www.shawrealtors.com



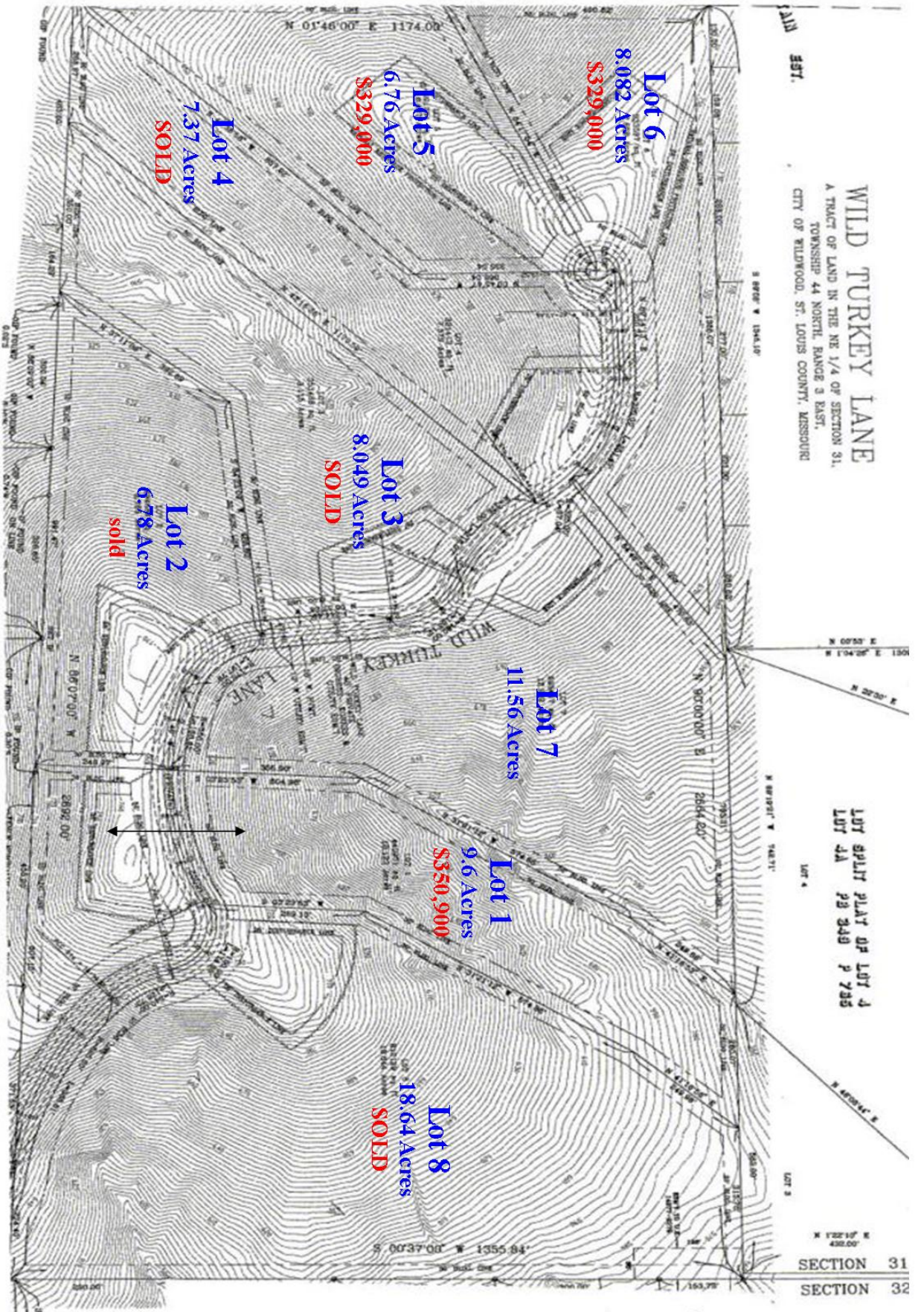
Area Information / Property Description

County	St. Louis
Subdivision	Wild Turkey Lane
School District	Rockwood
High School	Eureka
Middle School	LaSalle Springs
Elementary School	Eureka
Lot Size	10.0± Acres
Lot Description	Wooded Ridge tops with great views
Street Access	Asphalt
Taxes	To be assessed
Associations Fees & Restrictions	\$500.00 Yes Called Office for a Copy
Utilities	Water: None / Sewer: None Electric: Yes / Gas: None Phone: Yes / Cable: None



WILD TURKEY LANE
A TRACT OF LAND IN THE NE 1/4 OF SECTION 31,
TOWNSHIP 44 NORTH, RANGE 3 EAST,
CITY OF WILDWOOD, ST. LOUIS COUNTY, MISSOURI

LOT SPLIT PLAT OF LOT 4
LOT 4A P 349 P 735
LOT 4



SECTION 31
SECTION 32