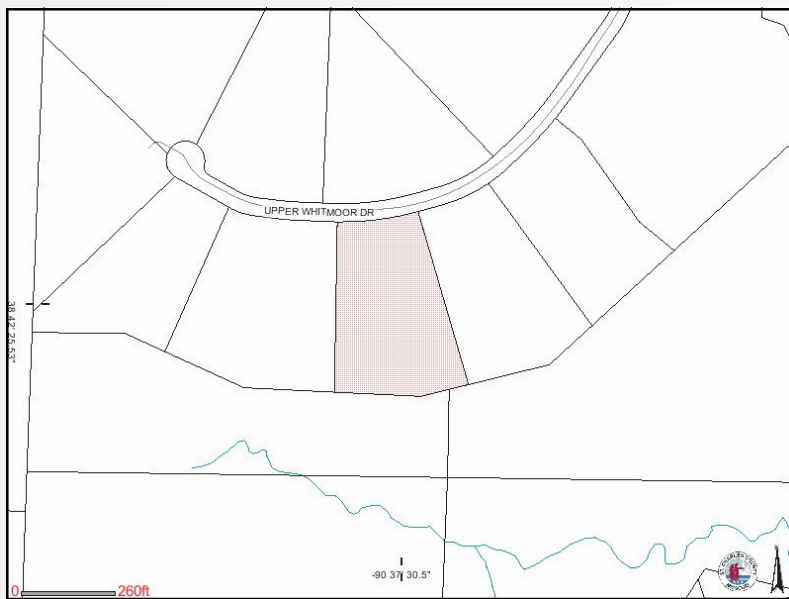


5 Upper Whitmoor Weldon Springs, Mo 63304

SALE PRICE: \$489,900



Contact

*Cathy Shaw-Connelly
(636) 346-4960
squawky1@aol.com*

ONLY 1 LOT REMAINING! Wow- what a beautiful 3+ acre lot on a street of some of the most stately homes around. This 3 +/- acre lot with all utilities available offers some open land for a possible circle drive with the ability to have a walk out lower level, possible pool area and lots of trees for privacy. All of this and it is only minutes away from highways and shopping, etc. Use your own builder or use De Shelter Homes. Please call listing agent for more details.

DIRECTIONS:

Hwy 40 north of Wolfum Rd to entrance to Whitmoor Country Club, Whitmoor Dr to Hillenkamp, right to Upper Whitmoor Dr. Lot on Left



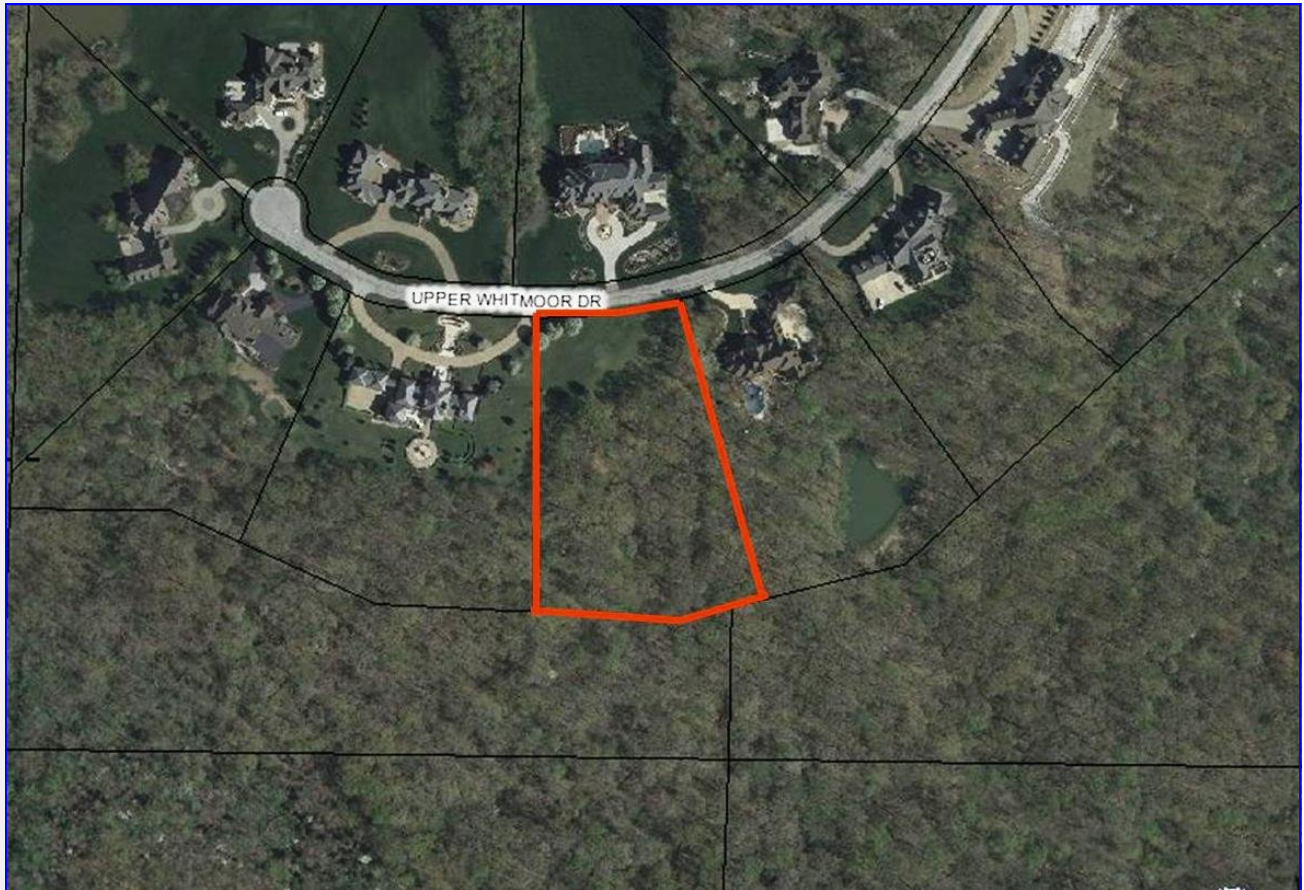
17813 Edison Ave. Suite 200 ♦ Chesterfield, Missouri 63005

Office: (636) 532-1922 ♦ Fax: (636) 532-0222 ♦ info@shawrealtors.com ♦ www.shawrealtors.com





—
|



Area Information / Property Description

County	St. Charles
Subdivision	Upper Whitmoor
School District	Francis Howell
High School	Francis Howell
Middle School	Mary Bryan
Elementary School	Independence
Lot Size	3.27± Acres
Lot Description	Level Lot, Terraced, Cul-De-Sac
Street Access	Asphalt
Taxes	\$ 5019.00 2010
Associations Fees & Restrictions	None
Utilities	Water: Public Electric: Yes Phone: Yes Sewer: Public



—
|