

2162 Whiskey Creek Lane, St. Charles, Mo 63348

SALE PRICE: \$195,875



Matt Shaw
(314) 503-4872
matt@shawrealtors.com

This property is currently being used as income producing property. You can continue to use as income producing property or this property is perfect to build your dream home in the country with lots of privacy. This property is very clean & gentle rolling.

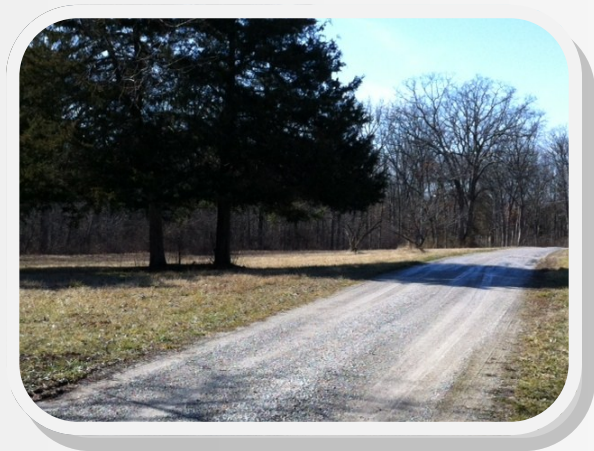
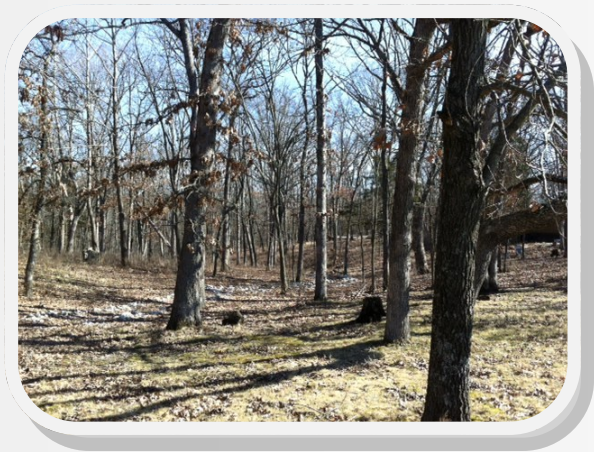
DIRECTIONS:

Hwy 40 to west on Hwy N to right on Schaper Rd to right on Whiskey Creek Ln. (No street sign for Whiskey Creek). Look for TOM SHAW REALTORS FOR SALE SIGN



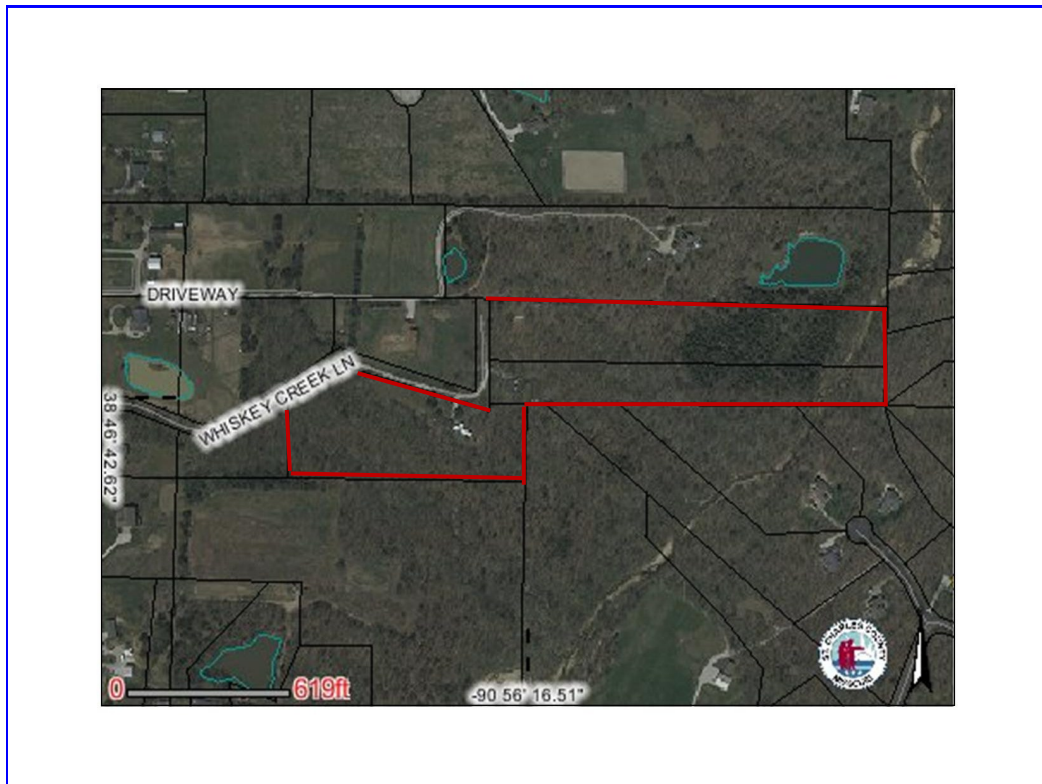
200 Long Road ♦ Suite 160 ♦ Chesterfield, Missouri 63005

Office: (636) 532-1922 ♦ Fax: (636) 532-0222 ♦ info@shawrealtors.com ♦ www.shawrealtors.com



Area Information / Property Description

County	St. Charles
Subdivision	
School District	Wentzville Timblerland
High School	Timblerland
Middle School	Timblerland
Elementary School	Boone Trail
Lot Size	7.83± Acres
Lot Description	Backs to Trees/Woods, Suitable for Horses, Level Lot, Wooded
Street Access	Private
Taxes	Call agent
Associations Fees & Restrictions	N/ A
Utilities	Water: Well Electric: Yes Phone: Yes Sewer: Septic



The information contained herein has been supplied to us by the owner of this property or by a third party. Tom Shaw Realtors does not guarantee its accuracy and recommends buyers or tenant to verify all information herein and to obtain a full boundary survey before buying said home or property. **PRICES AND SPECIFICATIONS ARE SUBJECT TO CHANGE WITHOUT NOTICE**