

# 3701 Toedebusch Rd. Defiance, Mo. 63341



**SALE PRICE: \$835,000**

*Contact*

*Cathy Shaw-Connely*  
(636) 346-  
4960squawky1@aol.com

*Tom Shaw Jr.*  
(314) 283-5064  
tomshawjr@yahoo.com



Wow! What a beautiful 1 1/2 story with panoramic views! Close to Hwy 40 & Hwy 70 & lots of shopping! Circle drive, in ground pool, 5 bdrms, 5 full and 2 half baths with a 4 car garage. Gourmet kitchen features granite counters, 42 inch cherry cabinets, huge center island, 6 burner gas range with grill, 2 dish washers, built-in refrigerator, wood floors & breakfast room. Outstanding hearth room w/floor to ceiling stone surround WB fireplace. two story great room with wall of windows overlooking Pool. House could be sold with Approximately 13.75± Acres for \$1,100,000.

<i>STYLE</i>	<i>ROOMS</i>	<i>BEDROOMS</i>	<i>BATHS</i>	<i>GARAGE</i>	<i>LOT SIZE</i>	<i>SCHOOL DISTRICT</i>
<b>1.5 STORY</b>	<b>7</b>	<b>5</b>	<b>5 Full 2 Half</b>	<b>4</b>	<b>3.00± Acres</b>	<b>FRANCIS HOWELL</b>

**DIRECTIONS:** Hwy 40 to Hwy DD/Winghaven exit approx 5.5 miles to left on Toedebusch Rd to home on left at end of road.



200 Long Road ♦ Suite 160 ♦ Chesterfield, Missouri 63005

Office: (636) 532-1922 ♦ Fax: (636) 532-0222 ♦ info@shawrealtors.com ♦ www.shawrealtors.com

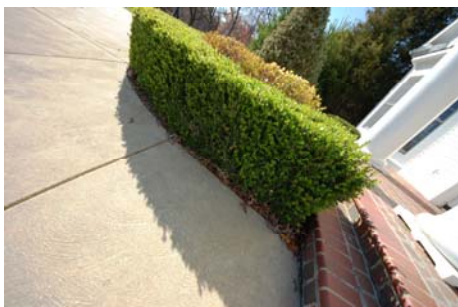
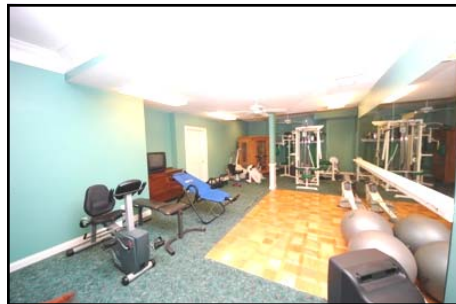
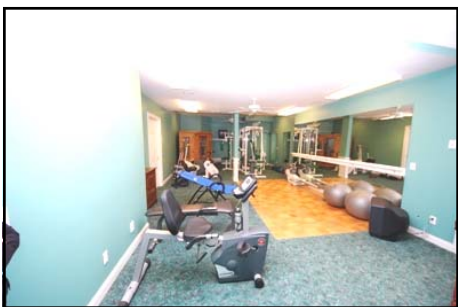


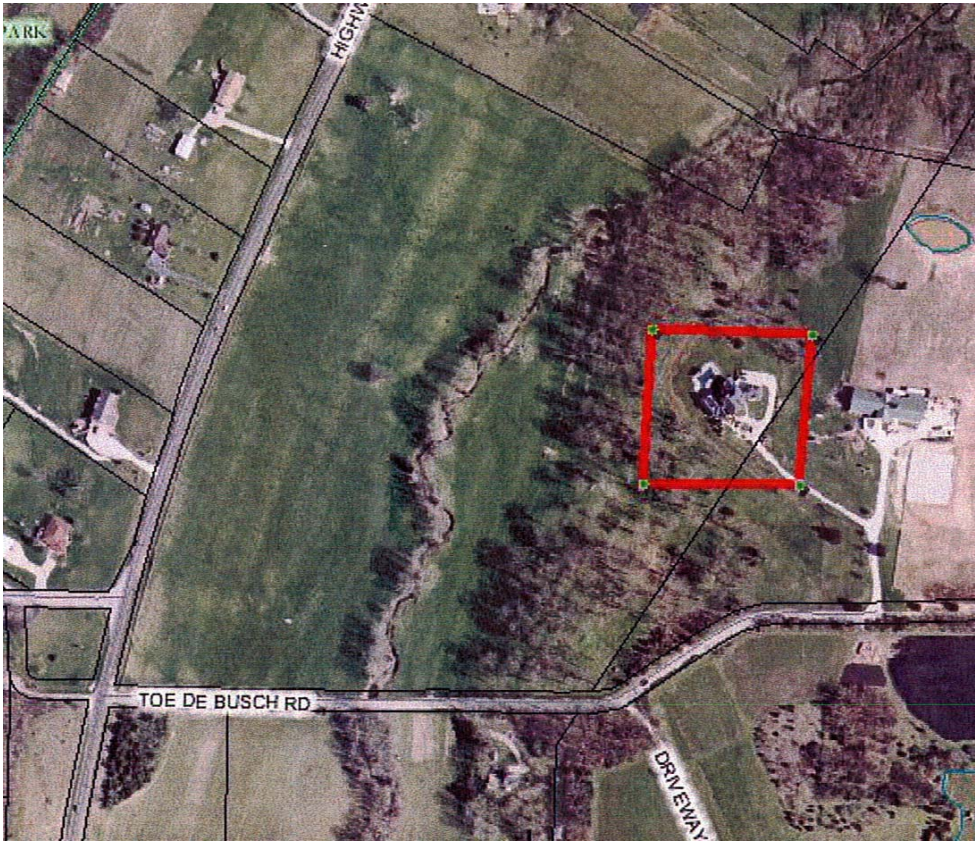
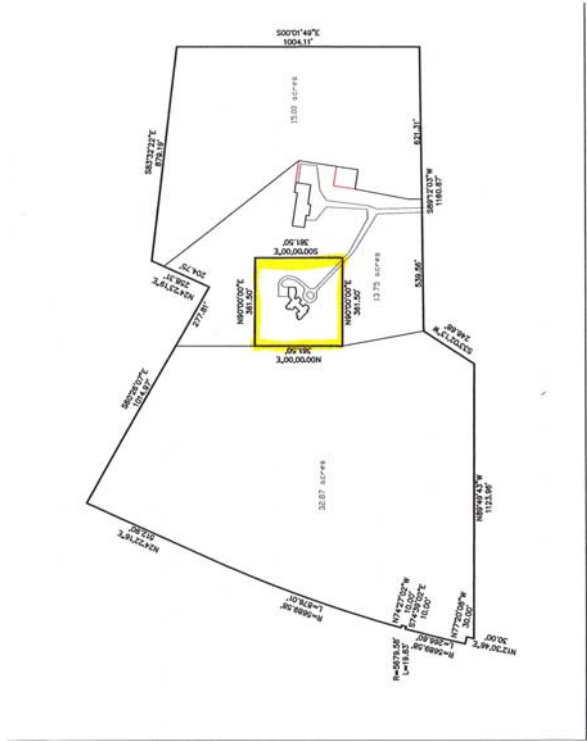
<i>FAMILY ROOM</i>	<i>LIVING ROOM</i>	<i>GREAT ROOM</i>	<i>DINING ROOM</i>	<i>DEN</i>	<i>KITCHEN</i>	<i>BREAKFAST ROOM</i>
<i>31' X 26'</i>	<i>N / A</i>	<i>26' X 16'</i>	<i>19' X 13'</i>	<i>19' X 13'</i>	<i>26' X 16'</i>	<i>12' X 12'</i>

<i>MASTER BEDROOM</i>	<i>HEARTH ROOM</i>	<i>GUEST BEDROOM</i>	<i>GUEST BEDROOM</i>	<i>GUEST BEDROOM</i>	<i>GUEST BEDROOM</i>	<i>RECREATION ROOM</i>	<i>LAUNDRY ROOM</i>
<i>18' X 15'</i>	<i>18' X 15'</i>	<i>23' X 13'</i>	<i>17' X 15'</i>	<i>15' X 15'</i>	<i>15' X 12'</i>	<i>31' X 28'</i>	<i>17' X 11'</i>

<i>CONSTRUCTION</i>	<i>AGE</i>	<i>HEATING</i>	<i>COOLING</i>	<i>FIRE-PLACES</i>	<i>LOT DESCRIPTION</i>	<i>AMENITIES</i>	<i>TAXES</i>	<i>ASSOCIATIONS FEES</i>
<i>FRAME VINYL SIDING</i>	<i>14</i>	<i>PROPANE FORCED AIR</i>	<i>ELECTRIC: CENTRAL-CEILINFG FANS</i>	<i>5 GAS WOOD BURNING</i>	<i>SUITABLE FOR HORSES PASTURE WOODED</i>	<i>INGROUND POOL JET TUB UNDERGROUND UTILITIES</i>	<i>\$10,831 2010</i>	<i>NONE</i>

<i>COUNTY</i>	<i>UTILITIES</i>	<i>SCHOOLS</i>
<i>ST. CHALRES</i>	<i>ELECTRIC, PROPANE PHONE, WELL, SEPTIC</i>	<i>HIGH SCHOOL: FRANCIS HOWELL MIDDLE SCHOOL: FRANCIS HOWELL ELEMENTARY: DANIEL OONE</i>





The information contained herein has been supplied to us by the owner of this property or by a third party. Tom Shaw Realtors does not guarantee its accuracy and recommends buyers or tenant to verify all information herein and to obtain a full boundary survey before buying said home or property. **PRICES AND SPECIFICATIONS ARE SUBJECT TO CHANGE WITHOUT NOTICE**