

15± Acres Toedebusch Rd Defiance, Mo 63341

SALE PRICE: \$525,000



Contact

*Cathy Shaw-Connely
(636) 346-4960
squawky1@aol.com*

*Tom Shaw Jr.
(314) 283-5064
tomshawjr@yahoo.com*

*Tom Shaw Sr.
(314) 540-6854
tom-
shaw2000@centurytel.net*

Looking for great horse ranch? This is it - must see! Pasture is in great shape with plenty of trees for shade with a small creek running through property. May be a good lake site. May be part of a short sale. Property is fenced for cattle and horses

DIRECTIONS: *East on Hwy DD from Hwy D. 2 miles to property,
See sign*



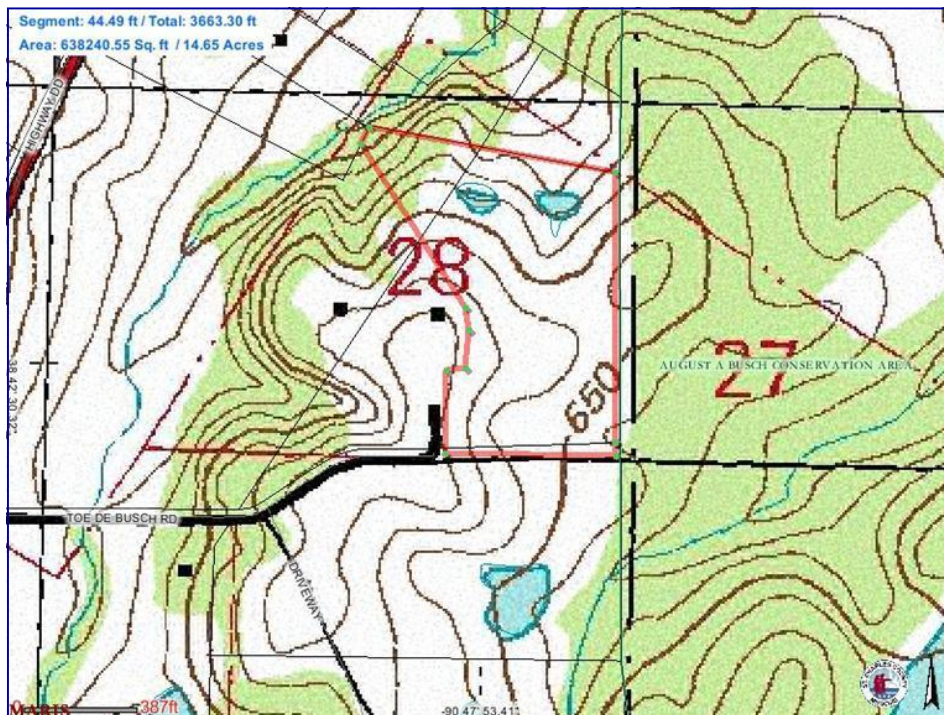
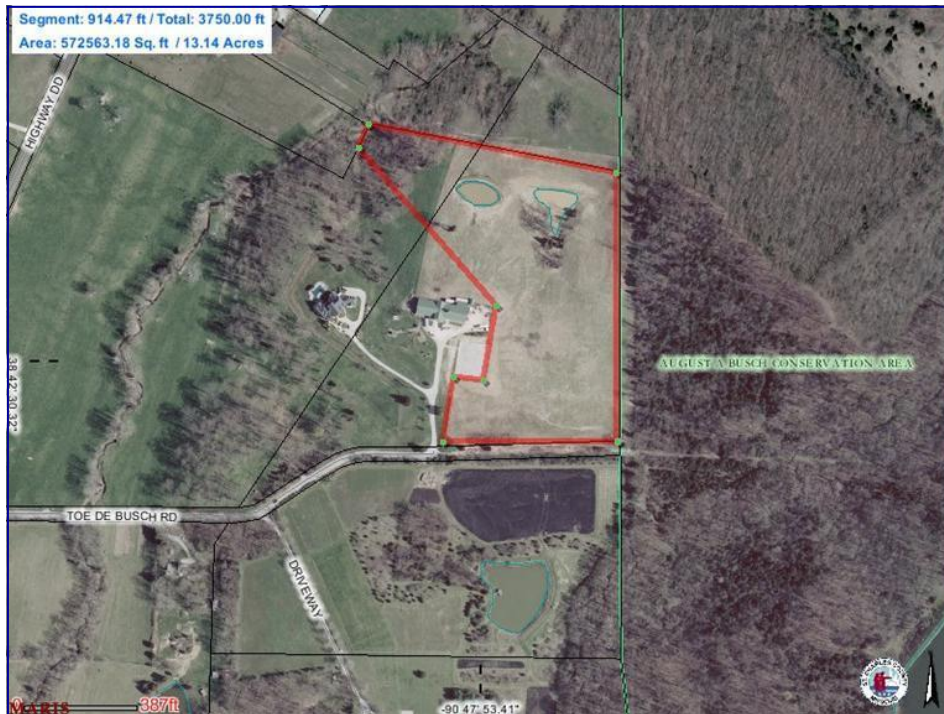
17863 Edison Ave ♦ Suite 200 ♦ Chesterfield, Missouri 63005

Office: (636) 532-1922 ♦ Fax: (636) 532-0222 ♦ info@shawrealtors.com ♦ www.shawrealtors.com



Area Information / Property Description

County	St. Charles
Subdivision	None
School District	Francis Howell
High School	Francis Howell
Middle School	Francis Howell
Elementary School	Daniel Bonne
Lot Size	32 ± Acres
Lot Description	Pasture, Gently Rolling, Wooded Bottom Land
Street Access	Asphalt
Taxes	To Be Assess
Associations Fees & Restrictions	None
Utilities	Water: Not Connected Electric: Yes Phone: Yes Sewer: Not Connected



The information contained herein has been supplied to us by the owner of this property or by a third party. Tom Shaw Realtors does not guarantee its accuracy and recommends buyers or tenant to verify all information herein and to obtain a full boundary survey before buying said home or property. **PRICES AND SPECIFICATIONS ARE SUBJECT TO CHANGE WITHOUT NOTICE**