

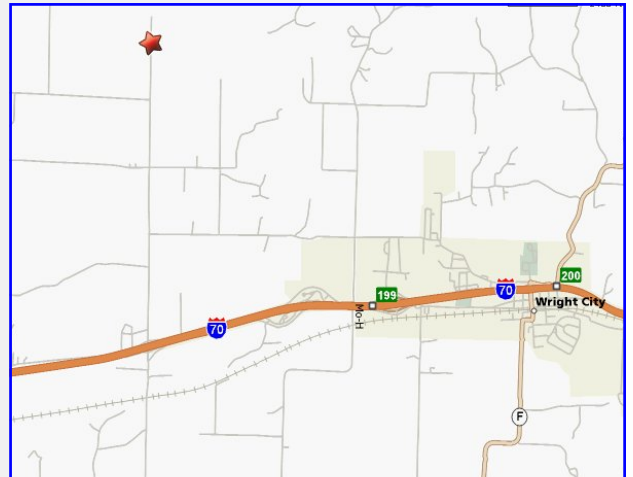
**FOR SALE**

**30296 N Stracks Church Rd.  
Wright City, Mo. 63390**



**SALE PRICE: \$459,000**

**19 STALLS - 150' X 60' INDOOR ARENA  
200' X 100' OUTDOOR ARENA  
3 BEDROOM - 2 BATH MANUFACTURED HOME  
LARGE PASTURE & TURNOUTS  
14.00± ACRES  
WARREN SCHOOL DISTRICT**



**DIRECTIONS:** From Hwy 70 to exit 199 toward Wright City to right on Wildcat Drive to left on Westwoods Dr. to right on Strack Church Rd.

**Cathy Shaw-Connely**

**& Tom Shaw Jr.**

**Contact: (636) 346-4960**

**(314) 283-5064**

**squawky1@aol.com**

**tsshawjr@shawrealtors.com**



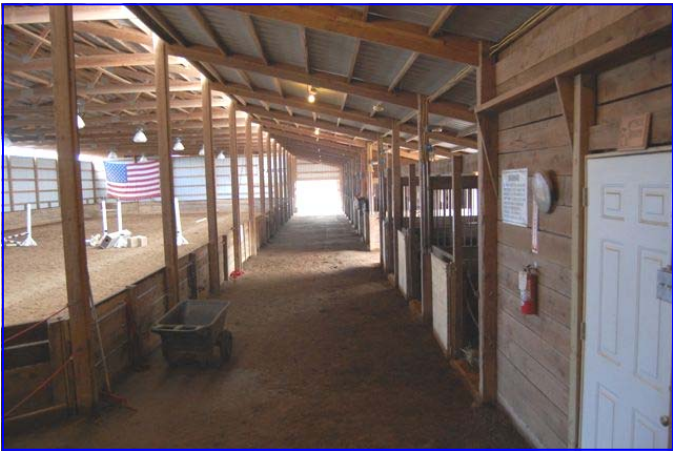
200 Long Road ♦ Suite 160 ♦ Chesterfield, Missouri 63005

Office: (636) 532-1922 ♦ Fax: (636) 532-0222 ♦ info@shawrealtors.com ♦ www.shawrealtors.com



**Area Information**

County	Warren
Subdivision	None
School District	Warren
High School	Warren
Middle School	Warren
Elementary School	Warren
Taxes	\$780.00 07'
Associations Fees	None
Utilities	Water: Well Sewer: Septic Electric: Yes





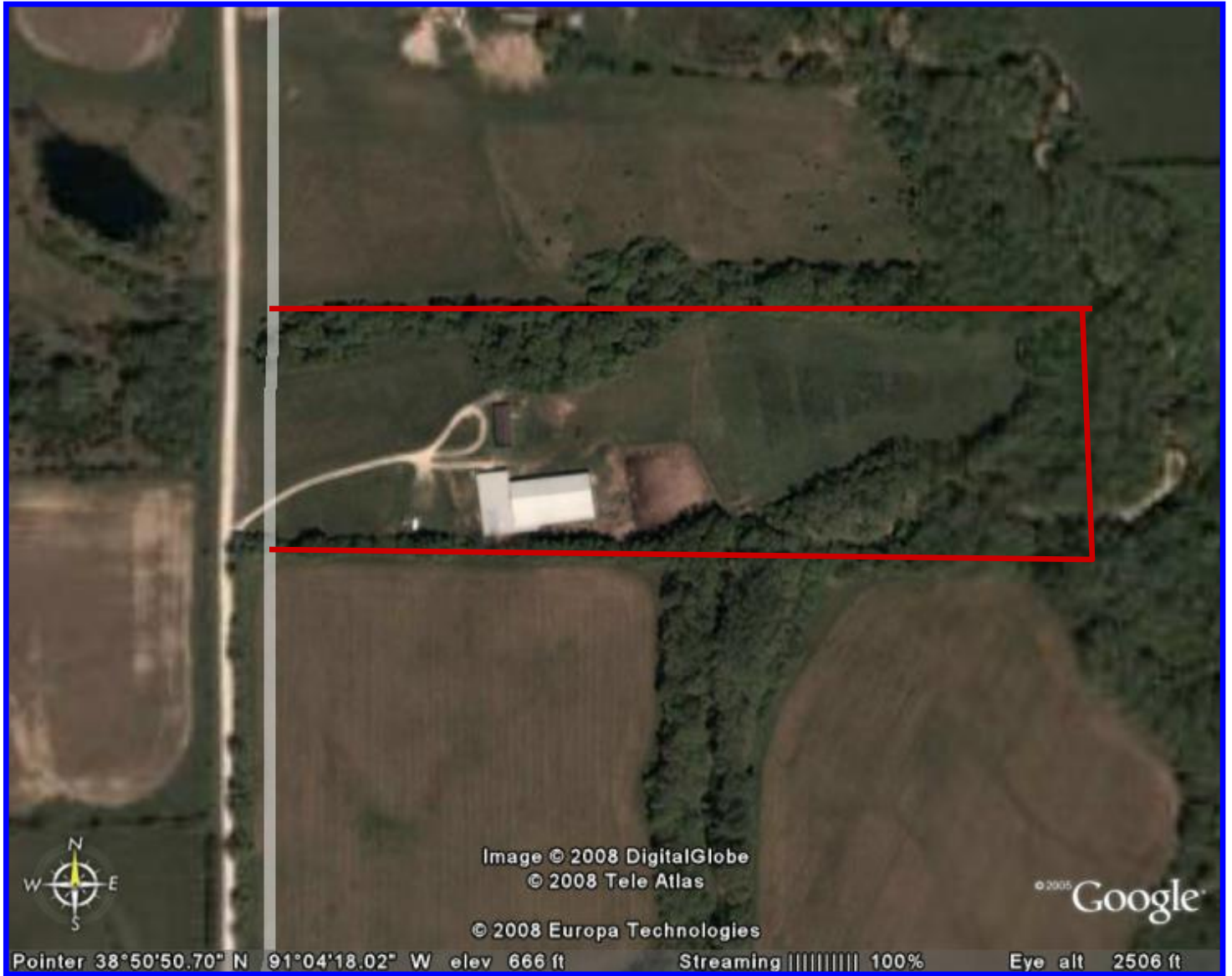


Image © 2008 DigitalGlobe  
© 2008 Tele Atlas

© 2005 Google

© 2008 Europa Technologies

Pointer 38°50'50.70" N 91°04'18.02" W elev 666 ft Streaming ||||| 100% Eye alt 2506 ft