

*1420 Shepard Rd.
Wildwood, Mo 63038*

SALE PRICE: \$199,900



Contact

*Cathy Shaw-Connely
(636) 346-4960
squawky1@aol.com*

*Tom Shaw Jr.
(314) 283-5064
tomshawjr@yahoo.com*

Wow what a rare find in the heart of Wildwood.....3+/- pristine acres right in the heart of Wildwood.....Close to Wildwood town center, schools churches etc....This lot offers some nice open land in front and a gentle sloping wooded lot perfect for your walk out lower level with plenty of privacy and seclusion...This lot is not a drive by to see the beauty of this lot . You will not be disappointed....

DIRECTIONS:

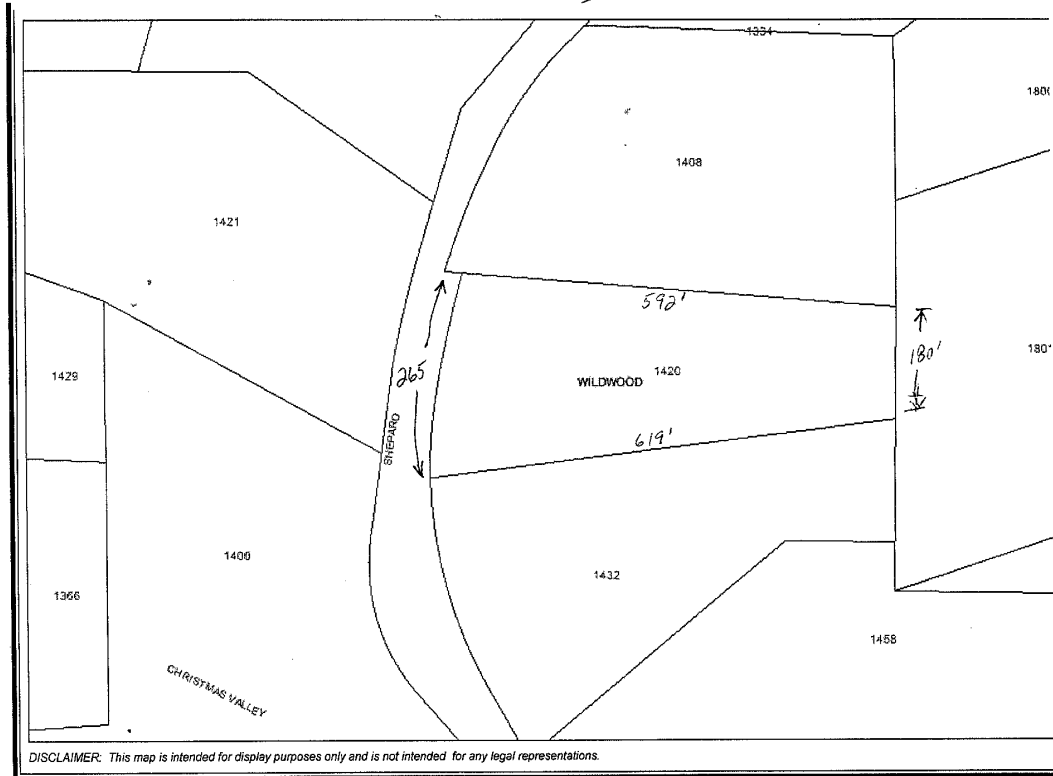
From Hwy 109 to east on Shepard Rd to property on right.



200 Long Road ♦ Suite 160 ♦ Chesterfield, Missouri 63005

Office: (636) 532-1922 ♦ Fax: (636) 532-0222 ♦ info@shawrealtors.com ♦ www.shawrealtors.com

LOT DIMENSIONS



<http://gis.stlouisco.com/search/print.asp?Aerial=off>

5/19/2007

Area Information / Property Description

County	St. Louis
Subdivision	Theil
School District	Rockwood
High School	Lafayette
Middle School	Rockwood Valley
Elementary School	Babler
Lot Size	3.00± Acres
Lot Description	Heavy Wooded, Pasture, Natural
Street Access	Asphalt
Taxes	\$838.00
Associations Fees & Restrictions	None
Utilities	Water: None Electric: Yes Phone: Yes Sewer: None



The information contained herein has been supplied to us by the owner of this property or by a third party. Tom Shaw Realtors does not guarantee its accuracy and recommends buyers or tenant to verify all information herein and to obtain a full boundary survey before buying said home or property. **PRICES AND SPECIFICATIONS ARE SUBJECT TO CHANGE WITHOUT NOTICE**