

1511 Scofield Valley Ln Wildwood, Mo. 63038

SALE PRICE: \$470,000

Contact

Cathy Shaw-Connely

(636) 346-4960

squawky1@aol.com



Spacious story and a half sitting on three acres in Wildwood. Doesn't get much better than that! Country feeling, yet close to all the amenities of West County. Foyer spills into two story great room with floor to ceiling windows. Kitchen boasts vaulted ceilings, center island, and sunny breakfast room with bay window. Enjoy the privacy of a main floor den with built in book cases. Main floor master boasts gas fireplace, walk in closet, and built in entertainment area. Inviting master bath with jetted tub and separate shower. Three bedrooms upstairs, one with private bath and a Jack & Jill bathroom separates the other two! Lower level is finished with rec room/family room, 5th bedroom & full bath.

<i>STYLE</i>	<i>ROOMS</i>	<i>BEDROOMS</i>	<i>BATHS</i>	<i>GARAGE</i>	<i>LOT SIZE</i>	<i>SCHOOL DISTRICT</i>
1.5 STORY	9	5	4Full 1Half	3	3.070± Acres	Rockwood

DIRECTIONS:

*Manchester West of 109 to Right on Pond Road
to Right on Portland Cove to Left on Scofield.*



17813 Edison Ave ♦ Suite 200 ♦ Chesterfield, Missouri 63005

Office: (636) 532-1922 ♦ Fax: (636) 532-0222 ♦ info@shawrealtors.com ♦ www.shawrealtors.com

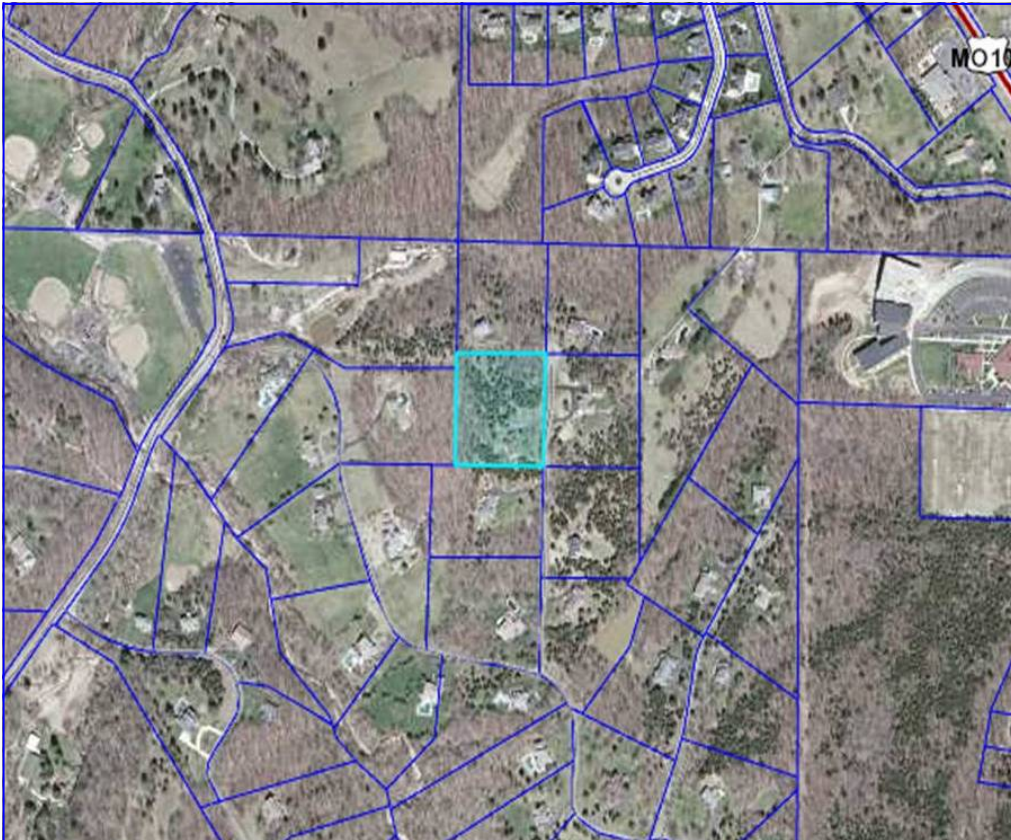


<i>FAMILY ROOM</i>	<i>GREAT ROOM</i>	<i>HEARTH ROOM</i>	<i>DINING ROOM</i>	<i>DEN</i>	<i>KITCHEN</i>	<i>BREAKFAST ROOM</i>
<i>21' X 13'</i>	<i>27' X 21'</i>	<i>N/A</i>	<i>15' X 14'</i>	<i>16' X 15'</i>	<i>29' X 16'</i>	<i>N/A</i>

<i>MASTER BEDROOM</i>	<i>GUEST BEDROOM</i>	<i>GUEST BEDROOM</i>	<i>GUEST BEDROOM</i>	<i>GUEST BEDROOM</i>	<i>RECREATION ROOM</i>	<i>LAUNDRY ROOM</i>
<i>30' X 21'</i>	<i>18' X 14'</i>	<i>17' X 15'</i>	<i>18' X 14'</i>	<i>22' X 15'</i>	<i>N/A</i>	<i>10' x 8'</i>

<i>CONSTRUCTION</i>	<i>AGE</i>	<i>HEATING</i>	<i>COOLING</i>	<i>FIREPLACES</i>	<i>LOT DESCRIPTION</i>	<i>AMENITIES</i>	<i>TAXES</i>	<i>ASSOCIATIONS FEES</i>
<i>BRICK VENEER DECRTV CEDAR/WOOD</i>	<i>19</i>	<i>ELECTRIC: FORCED AIR ZONED</i>	<i>ELECTRIC: CENTRAL, CEILING FANS ZONED</i>	<i>2 GAS</i>	<i>BACKS TO TREES</i>	<i>JET TUB</i>	<i>\$7,867 2010</i>	<i>\$700.00 YEARLY</i>

<i>COUNTY</i>	<i>UTILITIES</i>	<i>SCHOOLS</i>
<i>ST. LOUIS</i>	<i>ELECTRIC, PHONE, PROPANE WELL & SEPTIC</i>	<i>HIGH SCHOOL: LAFAYETTE MIDDLE SCHOOL: ROCKWOOD VALLEY ELEMENTARY: BABLER</i>



The information contained herein has been supplied to us by the owner of this property or by a third party. Tom Shaw Realtors does not guarantee its accuracy and recommends buyers or tenant to verify all information herein and to obtain a full boundary survey before buying said home or property. **PRICES AND SPECIFICATIONS ARE SUBJECT TO CHANGE WITHOUT NOTICE**