

# *1 Raleigh Parc Wildwood, Mo. 63011*

***SALE PRICE: \$599,900***



*Matt Shaw  
(314) 503-4872  
mjs1922@aol.com*



2 master Bedrooms for the extended family. 1.5 story, 7 Gabel Southern Colonial. Entrance gates for complete privacy. Home sits on 4 private acres. The kitchen features top of the line cooking. 30" Trivention Technology Oven (Thermal, Convection, Microwave), Ceramic Glass Cook top, additional oven, plus 2 microwaves, under the counter large capacity ice maker, Sub-Zero side by side. Free standing oversized 2 car garage plus 1 car fully insulated garage. Irrigation lawn system. 1st master bathroom features Marble counter tops. IN floor heated marble floor, walk in full Marble shower with 2 heads and built-in shampoo holders. Complete built-in shelves, shoe racks for master closet. Oversized master bedroom, sitting area with private outside sun deck. Extensive 3 piece cove moldings. Walk-out basement, with large finished are, with private office, built-in cabinets. Loads and loads of extras.

<i>STYLE</i>	<i>ROOMS</i>	<i>BEDROOMS</i>	<i>BATHS</i>	<i>CARPORT</i>	<i>LOT SIZE</i>	<i>SCHOOL DISTRICT</i>
<i>1.5 Story</i>	<i>11</i>	<i>4</i>	<i>3 Full 2 Half</i>	<i>3 Car</i>	<i>4.090 ± Acres</i>	<i>Rockwood</i>

**DIRECTIONS:**

Clayton Road west of Clarkson Road to right (North) on Strecker to home on left.



200 Long Road ♦ Suite 160 ♦ Chesterfield, Missouri 63005

Office: (636) 532-1922 ♦ Fax: (636) 532-0222 ♦ info@shawrealtors.com ♦ www.shawrealtors.com

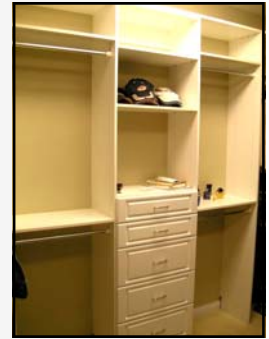


<i>FAMILY ROOM</i>	<i>LIVING ROOM</i>	<i>GREAT ROOM</i>	<i>DINING ROOM</i>	<i>DEN</i>	<i>KITCHEN</i>	<i>BREAKFAST ROOM</i>
<i>26' X 14'</i>	<i>18' X 15'</i>	<i>19' X 15'</i>	<i>14' X 12'</i>	<i>16' X 10'</i>	<i>18' X 16'</i>	<i>13' X 12'</i>

<i>MASTER BEDROOM</i>	<i>SITTING ROOM</i>	<i>GUEST BEDROOM</i>	<i>GUEST BEDROOM</i>	<i>GUEST BEDROOM</i>	<i>RECREATION ROOM</i>	<i>LAUNDRY ROOM</i>
<i>28' X 11'</i>	<i>N/A</i>	<i>21' X 12'</i>	<i>13' X 11'</i>	<i>11' X 10'</i>	<i>N/A</i>	<i>N/A</i>

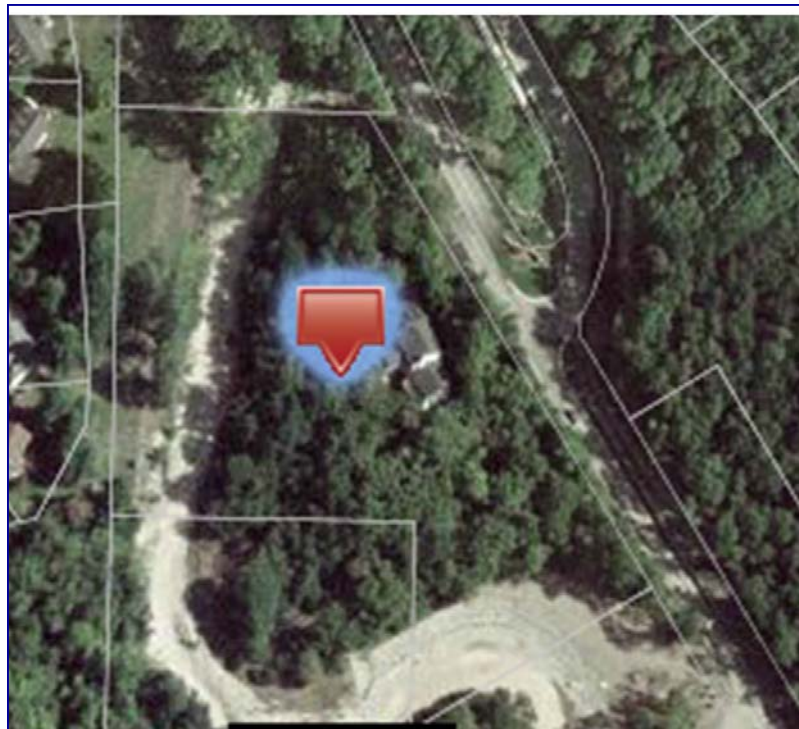
<i>CONSTRUCTION</i>	<i>AGE</i>	<i>HEATING</i>	<i>COOLING</i>	<i>FIREPLACES</i>	<i>LOT DESCRIPTION</i>	<i>AMENITIES</i>	<i>TAXES</i>	<i>ASSOCIATIONS FEES</i>
<i>Vinyl Siding</i>	<i>12</i>	<i>ELECTRIC: FORCED AIR</i>	<i>ELECTRIC: CENTRAL HEAT PUMP ZONED</i>	<i>1 WOOD BURNING</i>	<i>Backs to Trees/Woods, Wooded</i>	<i>UNDER GROUND UTILITIES</i>	<i>\$4,310 2010</i>	<i>NONE</i>

<i>COUNTY</i>	<i>UTILITIES</i>	<i>SCHOOLS</i>
<i>ST. LOUIS</i>	<i>ELECTRIC, PHONE, PUBLIC WATER &amp; SEPTIC</i>	<i>HIGH SCHOOL: IAFAYETTE MIDDLE SCHOOL: ROCKWOOD VALLEY ELEMENTARY: BABLER</i>





The information contained herein has been supplied to us by the owner of this property or by a third party. Tom Shaw Realtors does not guarantee its accuracy and recommends buyers or tenant to verify all information herein and to obtain a full boundary survey before buying said home or property. **PRICES AND SPECIFICATIONS ARE SUBJECT TO CHANGE WITHOUT NOTICE**



The information contained herein has been supplied to us by the owner of this property or by a third party. Tom Shaw Realtors does not guarantee its accuracy and recommends buyers or tenant to verify all information herein and to obtain a full boundary survey before buying said home or property. **PRICES AND SPECIFICATIONS ARE SUBJECT TO CHANGE WITHOUT NOTICE**