

1400 Pleasant Hill Rd. Leslie, Mo. 63056



SALE PRICE: \$885,000

Contact

Cathy Shaw-Connely

(636) 346-4960

squawkyl@aol.com

Tom Shaw Jr.

(314) 283-5064

tomshawjr@yahoo.com



Wow, wait until you see this serene private weekend getaway or full time residence....Out in the country but yet close to everything....This property is one of the most beautiful farms offering a little of many types of land wrapped up into one farm.....From open pasture to gentle rolling wooded and secluded areas to the beautiful lake for fishing or just sitting and day dreaming.....The 5 bedroom ranch style home offers custom millwork, wood floors some carpet open live able floor plan and great for entertaining.....That's not it the original log school house has been updated with 2 bedrooms full bath eat in kitchen and living room.....This property has so much history and glamour it is truly a must see.....Please call Tommy Shaw or Cathy Shaw Connely agent must accompany all showings...

STYLE	ROOMS	BEDROOMS	BATHS	GARAGE	LOT SIZE	SCHOOL DISTRICT
Ranch A Frame	10	5	3Full	3	172.00± Acres	UNION

DIRECTIONS:

From Hwy. 270, take I-44 West to exit 247 Hwy 50 West toward Union, right onto MO-47, Left on E. Independence Dr., Take the 2nd right on MO-A, Turn left on MO-YY, Turn left on Ebenezer Rd., Turn right on Pleasant Hill Rd to property on the right.



200 Long Road ♦ Suite 160 ♦ Chesterfield, Missouri 63005

Office: (636) 532-1922 ♦ Fax: (636) 532-0222 ♦ info@shawrealtors.com ♦ www.shawrealtors.com

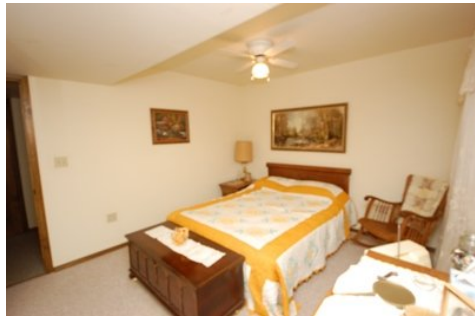


<i>FAMILY ROOM</i>	<i>LIVING ROOM</i>	<i>GREAT ROOM</i>	<i>DINING ROOM</i>	<i>DEN</i>	<i>KITCHEN</i>	<i>BREAKFAST ROOM</i>
<i>N/A</i>	<i>31' X 21'</i>	<i>N/A</i>	<i>N/A</i>	<i>12' X 9'</i>	<i>13' X 12'</i>	<i>12' X 9'</i>

<i>MASTER BEDROOM</i>	<i>HEARTH ROOM</i>	<i>GUEST BEDROOM</i>	<i>GUEST BEDROOM</i>	<i>GUEST BEDROOM</i>	<i>SITTING ROOM</i>	<i>RECREATION ROOM</i>	<i>LAUNDRY ROOM</i>
<i>23' X 13'</i>	<i>N/A</i>	<i>14' X 11'</i>	<i>23' X 13'</i>	<i>12' X 11'</i>	<i>13' X 11'</i>	<i>31' X 21'</i>	<i>14' X 9'</i>

<i>CONSTRUCTION</i>	<i>AGE</i>	<i>HEATING</i>	<i>COOLING</i>	<i>FIRE-PLACES</i>	<i>LOT DESCRIPTION</i>	<i>AMENITIES</i>	<i>TAXES</i>	<i>ASSOCIATIONS FEES</i>
<i>BRICK VENEER VINYL SIDING</i>		<i>PROPANE FORCED AIR</i>	<i>ELECTRIC: CENTRAL</i>	<i>2 WOOD BURNING</i>	<i>GENTLY ROLLING</i>	<i>UNDER-GROUND UTILITIES</i>	<i>\$2,135 2009</i>	<i>NONE</i>

<i>COUNTY</i>	<i>UTILITIES</i>	<i>SCHOOLS</i>
<i>FRANKLIN</i>	<i>ELECTRIC, PROPANE, PHONE, WELL & SEPTIC</i>	<i>HIGH SCHOOL: UNION MIDDLE SCHOOL: UNION ELEMENTARY: UNION</i>





The information contained herein has been supplied to us by the owner of this property or by a third party. Tom Shaw Realtors does not guarantee its accuracy and recommends buyers or tenant to verify all information herein and to obtain a full boundary survey before buying said home or property. **PRICES AND SPECIFICATIONS ARE SUBJECT TO CHANGE WITHOUT NOTICE**