

25795 Pike 244 Clarksville, MO. 63336

SALE PRICE: \$274,900

Contact

Barb Lawless
(314) 662-2554
babs@shawrealtors.com



THIS HOME THAT WAS BUILT IN 1860 ON 7+ ACRES. IT HAS THE GRAND FEEL OF WEALTH FROM THE ERA OF THE 1800'S. A TRULY HISTORICAL HOME, FROM THE TALL CEILINGS, LARGE SIZE ROOMS, HARDWOOD FLOORS, TRIM WORK, FIREPLACES IN EVERY ROOM, TO THE HAND CRAFTED STAIRWAY. THE HILL TOP SETTING WAS CLEARLY CHOSEN FOR THE MAGNIFICANT VIEWS IN EVERY DIRECTION. IT'S A MUST SEE !! ABOUT 45 MINS. FROM LAKE ST. LOUIS. ADDITIONAL ACREAGE AVAILABLE CALL AGENT FOR MORE DETAILS.

| <i>STYLE</i> | <i>ROOMS</i> | <i>BEDROOMS</i> | <i>BATHS</i> | <i>GARAGE</i> | <i>LOT SIZE</i> | <i>SCHOOL DISTRICT</i> |
|----------------|--------------|-----------------|---------------|---------------|--------------------|------------------------|
| 2 Story | 9 | 3 | 2 Full | 2 | 7.16± Acres | CLOPTON |

DIRECTIONS:

FROM ST. LOUIS, TAKE HWY 40 WEST TO FF/D TOWARD EOLIA, CONTINUE TO D(GREEN ST.)TURN RIGHT AT HWY N TO CO RD 244 TURN LEFT, GO ABOUT 2-3 MILES, DRIVEWAY AT RED GATE. LOOK FOR SIGNS.



17813 Edison Ave ♦ Suite 200 ♦ Chesterfield, Missouri 63005

Office: (636) 532-1922 ♦ Fax: (636) 532-0222 ♦ info@shawrealtors.com ♦ www.shawrealtors.com



| | | | | | | |
|--------------------|--------------------|-------------------|--------------------|------------------|-----------------|-----------------------|
| <i>FAMILY ROOM</i> | <i>LIVING ROOM</i> | <i>GREAT ROOM</i> | <i>DINING ROOM</i> | <i>DEN</i> | <i>KITCHEN</i> | <i>BREAKFAST ROOM</i> |
| <i>18' X 17'</i> | <i>18' X 18'</i> | <i>N/A</i> | <i>16' X 11'</i> | <i>16' X 15'</i> | <i>23' X 8'</i> | <i>N/A</i> |

| | | | | | | |
|-----------------------|---------------------|----------------------|----------------------|----------------------|------------------------|---------------------|
| <i>MASTER BEDROOM</i> | <i>SITTING ROOM</i> | <i>GUEST BEDROOM</i> | <i>GUEST BEDROOM</i> | <i>GUEST BEDROOM</i> | <i>RECREATION ROOM</i> | <i>LAUNDRY ROOM</i> |
| <i>18' X 16'</i> | <i>15' X 8'</i> | <i>17' X 16'</i> | <i>18' X 16'</i> | <i>N/A</i> | <i>N/A</i> | <i>13' x 5'</i> |

| <i>CONSTRUCTION</i> | <i>AGE</i> | <i>HEATING</i> | <i>COOLING</i> | <i>FIREPLACES</i> | <i>LOT DESCRIPTION</i> | <i>AMENITIES</i> | <i>TAXES</i> | <i>ASSOCIATIONS FEES</i> |
|----------------------------|------------|---------------------------------------|----------------------------|--------------------------------------|---|------------------|----------------------------------|--------------------------|
| <i>Brick Veneer Predom</i> | <i>151</i> | <i>ELECTRIC: FORCED AIR GEOTHEMAL</i> | <i>ELECTRIC: GEOTHEMAL</i> | <i>8 WOOD BURNING NON FUNCTIONAL</i> | <i>SUITABLE FOR HORSES FENCING BACKS TO OPEN GROUND POND / LAKE</i> | | <i>\$1,688.00</i> <i>2010</i> | <i>NONE</i> |

| <i>COUNTY</i> | <i>UTILITIES</i> | <i>SCHOOLS</i> |
|---------------|---|--|
| <i>PIKE</i> | <i>ELECTRIC, PHONE, WELL & SEPTIC</i> | <i>HIGH SCHOOL: CLOPTON</i> <i>MIDDLE SCHOOL: CLOPTON</i> <i>ELEMENTARY: CLOPTON</i> |

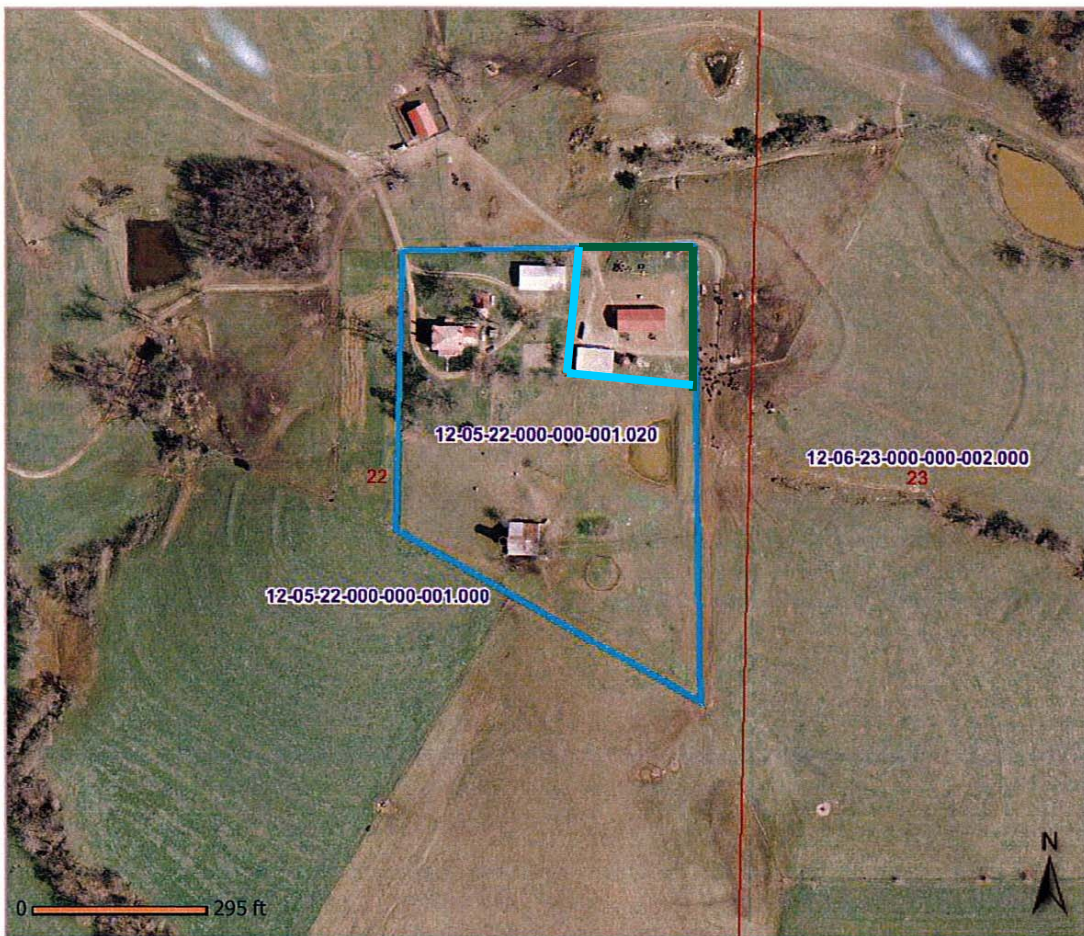


The information contained herein has been supplied to us by the owner of this property or by a third party. Tom Shaw Realtors does not guarantee its accuracy and recommends buyers or tenant to verify all information herein and to obtain a full boundary survey before buying said home or property. **PRICES AND SPECIFICATIONS ARE SUBJECT TO CHANGE WITHOUT NOTICE**

Pike County, MO



Date Created: 4/1/2011
Map Scale: 1 in = 295 ft

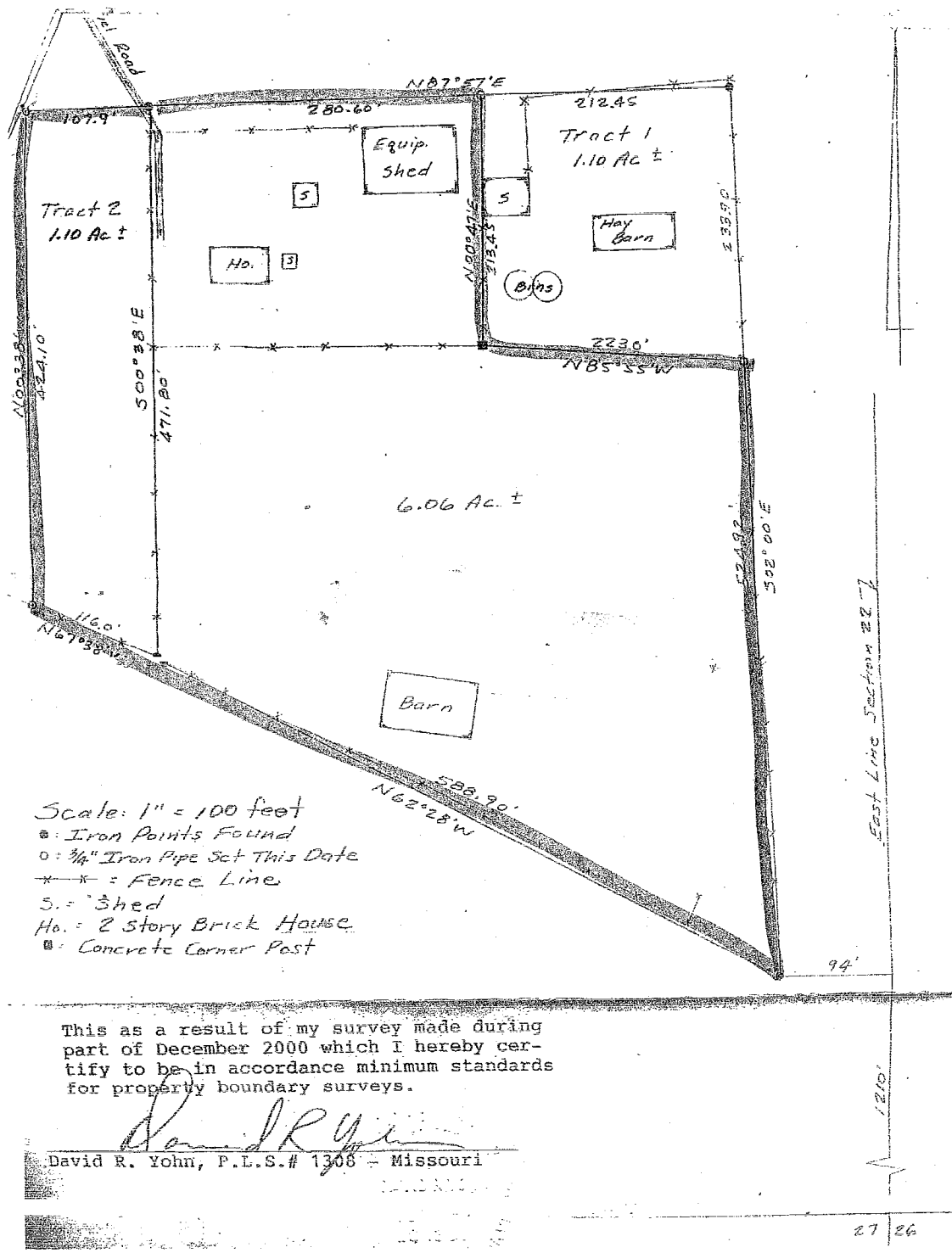


- Legend**
- Parcels
 - Quarters
 - Sections

| | | | | | |
|------------------------------|---------------------------|---------------------|-------------|----------------------|-----|
| Parcel ID | 12-05-22-000-000-001.020 | Alternate ID | N/A | Owner Address | N/A |
| Sec/Twp/Rng | 22-53-1 | Class | Residential | | |
| Property Address | 25795 PIKE 244 | Acreeage | 7.00 | | |
| District | 3-000-000-000-1-000-010-0 | | | | |
| Brief Tax Description | RURAL | | | | |

(Note: Not to be used on legal documents)

The information contained herein has been supplied to us by the owner of this property or by a third party. Tom Shaw Realtors does not guarantee its accuracy and recommends buyers or tenant to verify all information herein and to obtain a full boundary survey before buying said home or property. **PRICES AND SPECIFICATIONS ARE SUBJECT TO CHANGE WITHOUT NOTICE**



The information contained herein has been supplied to us by the owner of this property or by a third party. Tom Shaw Realtors does not guarantee its accuracy and recommends buyers or tenant to verify all information herein and to obtain a full boundary survey before buying said home or property. **PRICES AND SPECIFICATIONS ARE SUBJECT TO CHANGE WITHOUT NOTICE**