

420 Parkview Place Dr. Ellisville, Mo. 63021

SALE PRICE: \$139,900

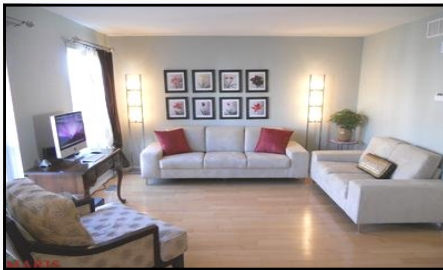


Contact

Cathy Shaw-Connely

(636) 346-4960

squawky1@aol.com



Wow! Beautiful one of a kind 2 bedroom 1 1/2 bath condo in Rockwood School District! Wait until you see the beautiful hardwood floors, great open floor plan with a spindle staircase & custom master bedroom closet! Custom Window treatments throughout. No need to do anything, this condo is move in ready.

<i>STYLE</i>	<i>ROOMS</i>	<i>BEDROOMS</i>	<i>BATHS</i>	<i>GARAGE</i>	<i>LOT SIZE</i>	<i>SCHOOL DISTRICT</i>
<i>2 Story Condo</i>	<i>7</i>	<i>2</i>	<i>1 Full 1 Half</i>	<i>1</i>	<i>.04</i>	<i>Rockwood</i>

DIRECTIONS: *Manchester to Kiefer Creek, South to subdivision*



200 Long Road ♦ Suite 160 ♦ Chesterfield, Missouri 63005

Office: (636) 532-1922 ♦ Fax: (636) 532-0222 ♦ info@shawrealtors.com ♦ www.shawrealtors.com



<i>GREAT ROOM</i>	<i>LIVING ROOM</i>	<i>FAMILY ROOM</i>	<i>DINING ROOM</i>	<i>DEN</i>	<i>KITCHEN</i>	<i>BREAKFAST ROOM</i>
<i>N / A</i>	<i>19' X 10'</i>	<i>19' X 12'</i>	<i>11' X 9'</i>	<i>N / A</i>	<i>10' X 9'</i>	<i>13' X 11'</i>

<i>MASTER BEDROOM</i>	<i>SITTING ROOM</i>	<i>GUEST BEDROOM</i>	<i>GUEST BEDROOM</i>	<i>GUEST BEDROOM</i>	<i>RECREATION ROOM</i>	<i>LAUNDRY ROOM</i>
<i>14' X 12'</i>	<i>N / A</i>	<i>N / A</i>	<i>N / A</i>	<i>N / A</i>	<i>N / A</i>	<i>N / A</i>

<i>CONSTRUCTION</i>	<i>AGE</i>	<i>HEATING</i>	<i>COOLING</i>	<i>FIREPLACES</i>	<i>LOT DESCRIPTION</i>	<i>AMENITIES</i>	<i>TAXES</i>	<i>ASSOCIATIONS FEES</i>
<i>BRICK / VENEER FRONT</i>	<i>8</i>	<i>ELECTRIC: FORCED AIR HUMID-DIFER</i>	<i>ELECTRIC: CENTRAL</i>	<i>NONE</i>		<i>UNDER GROUND UTILITIES</i>	<i>\$2,203.00 2010</i>	<i>\$145.00 A MONTH</i>

<i>COUNTY</i>	<i>UTILITIES</i>	<i>SCHOOLS</i>
<i>ST. LOUIS</i>	<i>ELECTRIC, PHONE, PUBLIC WATER & SEWERS</i>	<i>HIGH SCHOOL: LAFAYETTE MIDDLE SCHOOL: CRESTWOOD ELEMENTARY: RIDGE MEADOWS</i>