

*Pacland Dr.  
Chesterfield, Mo. 63005*

***SALE PRICE: \$449,000***

*Contact*

*Cathy Shaw-Connely  
(636) 346-4960  
squawky1@aol.com*



**Wow! This 3.63+/- Acre Wooded Lot With Lake View In Pacland Place.**

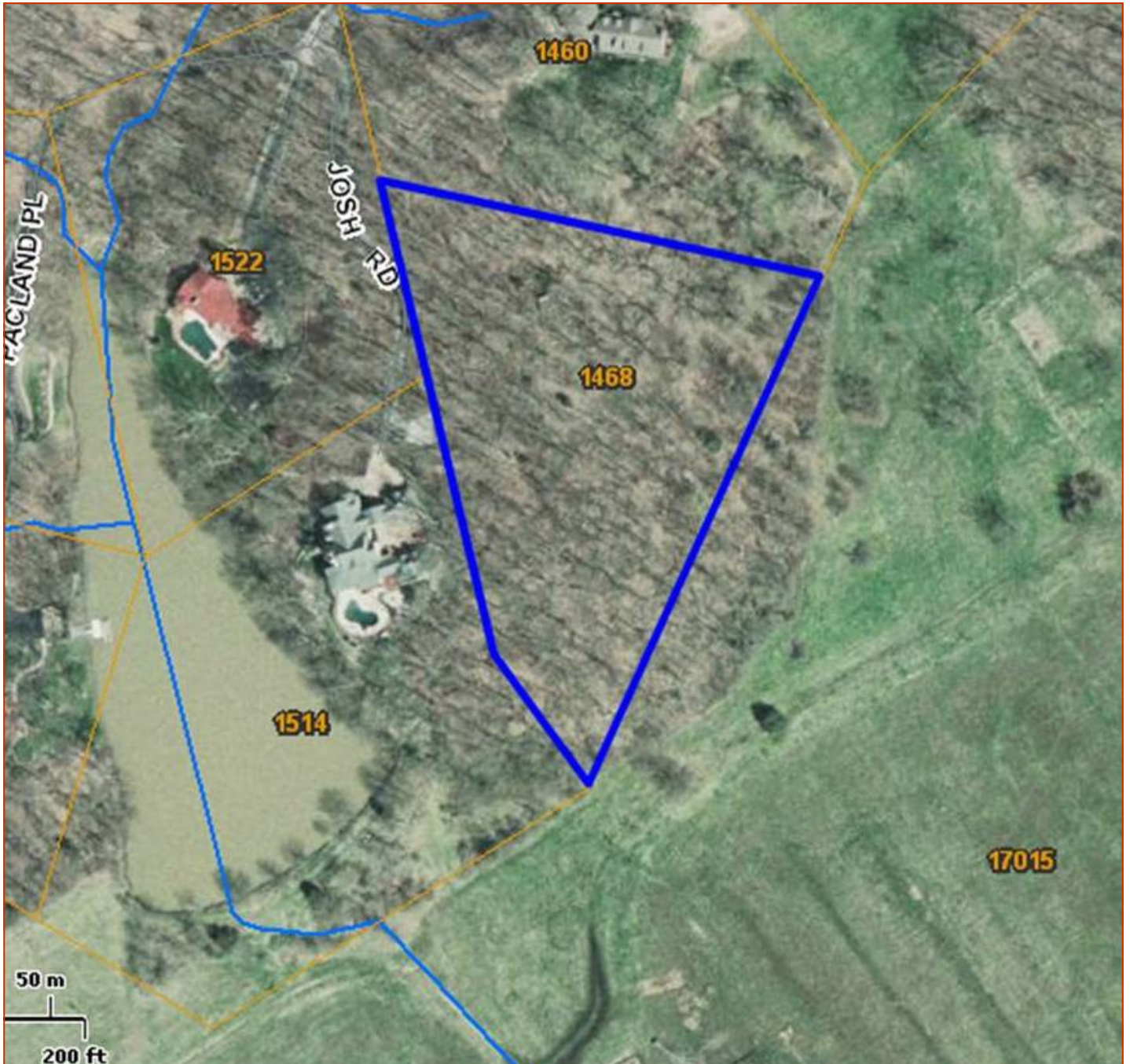
**DIRECTIONS:**

Kehrs Mill Rd. S. of Wildhorse Creek Rd., for .8 miles, R on Pacland Place (NOT Pacland Estates- no gates). L at the T in the road and continue to the end of the cul de sac. R on the driveway off the cul de sac & the 1st left turn is the driveway



200 Long Road ♦ Suite 160 ♦ Chesterfield, Missouri 63005

Office: (636) 532-1922 ♦ Fax: (636) 532-0222 ♦ info@shawrealtors.com ♦ www.shawrealtors.com



The information contained herein has been supplied to us by the owner of this property or by a third party. Tom Shaw Realtors does not guarantee its accuracy and recommends buyers or tenant to verify all information herein and to obtain a full boundary survey before buying said home or property. **PRICES AND SPECIFICATIONS ARE SUBJECT TO CHANGE WITHOUT NOTICE**