

# *15944 Old Clarkson Rd. Chesterfield, Mo 63017*

***SALE PRICE: \$29,900***



*Chip DeWitt  
(314) 503-3619  
chip@shawrealtors.com*

*Matt Shaw  
(314) 503-4872  
Matt@shawrealtors.com*

**Rare Find a vacant lot in the heart of  
Chesterfield. Almost ½ half acre lot with all  
utilities.**

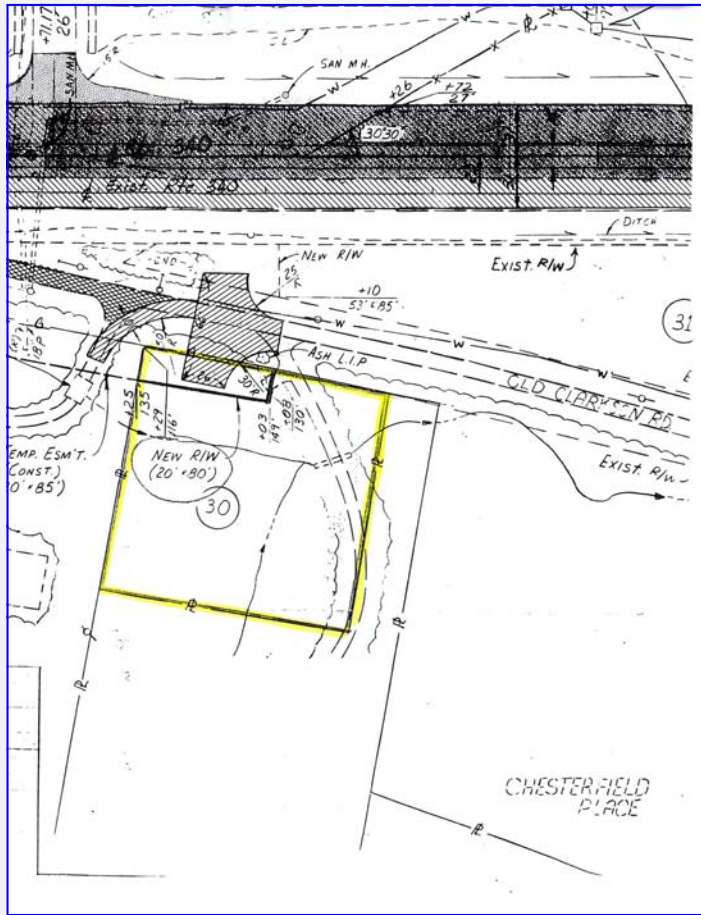
**DIRECTIONS:**

*Clarkson Rd. to east on Baxter Rd. to right on Old Clarkson  
Rd to sigh on left.*



200 Long Road ♦ Suite 160 ♦ Chesterfield, Missouri 63005

Office: (636) 532-1922 ♦ Fax: (636) 532-0222 ♦ info@shawrealtors.com ♦ www.shawrealtors.com



### Area Information / Property Description

County	St. Louis	
Subdivision	Old Clarkson Estates Lot 2 Resub	
School District	Rockwood	
High School	Marquette	
Middle School	Crestview	
Elementary School	Kehrs Mill	
Lot Description	Wooded , Creek	
Street Access	Private /	
Associations Fees & Restrictions	None	
Utilities	Water: None /	Sewer: None
	Electric: Yes /	Gas: Yes
	Phone: Yes /	Cable: Yes