

The Oaks, Wildwood, Mo 63038

Lots: 4, 5, & 6.



Contact
Cathy Shaw-Connely
(636) 346-4960
squawky1@aol.com

These beautiful lots are ready for your Dream Home! Friendly, luxurious, Custom home community, The Oaks At Wildwood offers manicured yards along a quiet cul-de-sac. The community is framed by a mature, although not-to-thick, wooded surrounding. Large, 3-acre lots with Public Water, Laclede Gas, Charter Cable, High-speed internet, etc, etc. Close to all of the best West County has to offer...yet still offering large lots, multi-acre sites, and privacy!

DIRECTIONS:

Take Manchester Road (Hwy 100) West. Turn Right on Mueller Rd (approx. 1 mile past 109.) Quick Left into the Oaks at Wildwood (Wildwood Forest Dr.) --close to dining, golfing, parks, excellent schools, etc-

**Tom Shaw
Realtors**

17813 Edison Ave. Suite 200, Chesterfield, MO 63005
Office: (636) 532-1922 Fax: (636) 532-0222
Info@shawrealtors.com, www.shawrealtors.com



17813 Edison Ave. Suite 200 ♦ Chesterfield, Missouri 63005

Office: (636) 532-1922 ♦ Fax: (636) 532-0222 ♦ info@shawrealtors.com ♦ www.shawrealtors.com



Area Information / Property Description

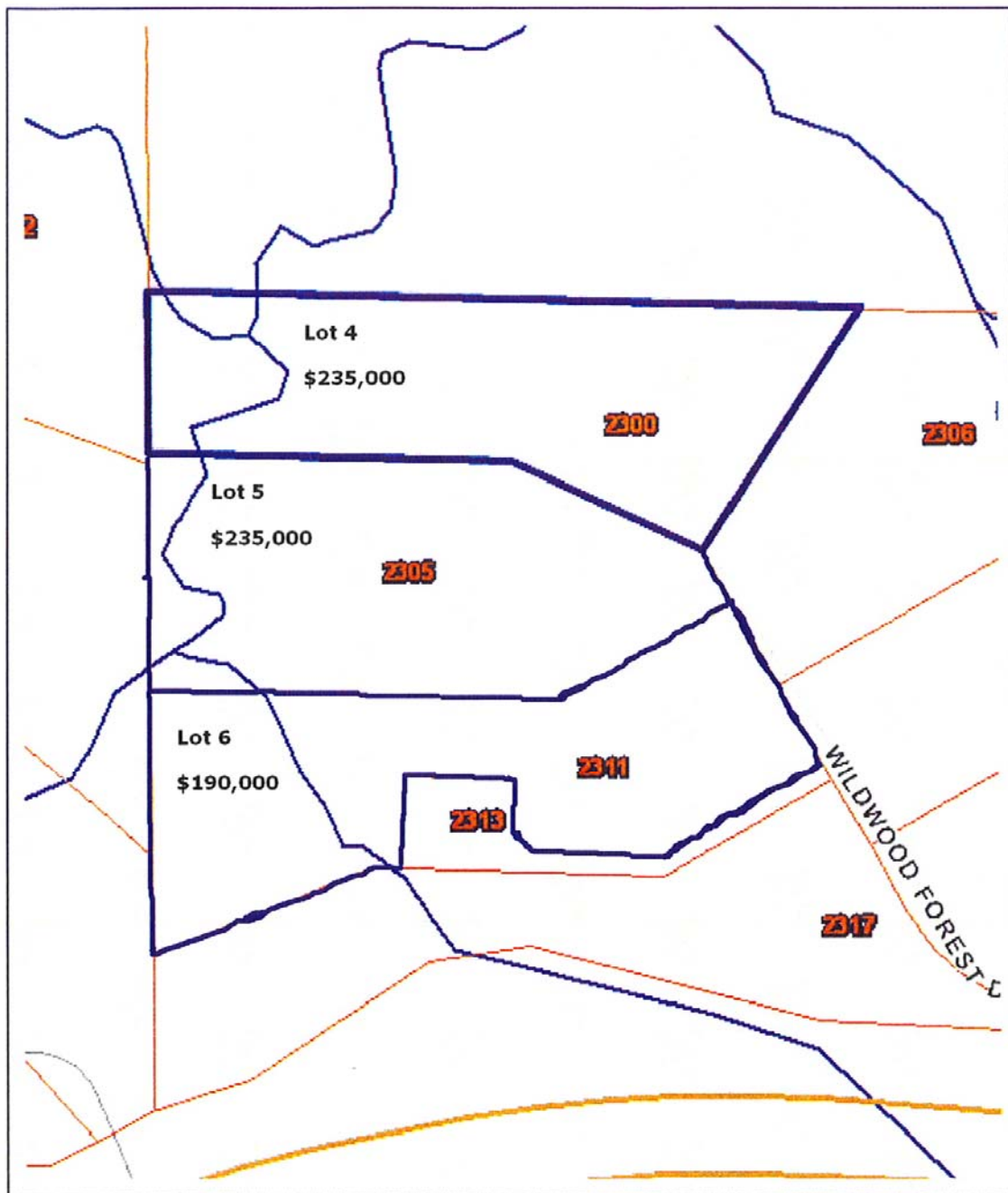
County	St. Louis
Subdivision	The Oaks Of Wildwood
School District	Rockwood
High School	Lafayette
Middle School	Rockwood Valley
Elementary School	Babler
Taxes	\$ 1,369 2010
Associations Fees & Restrictions	\$2,000 Yearly
Utilities	Water: Public Electric: Yes Phone: Yes Sewer: Community
Lot Description	Scattered, Back to Trees
Street Access	Asphalt

Lot 4 - 3.10 +/- Acres Price: \$235,000

Lot 5 - 3.07 +/- Acres Price: \$235,000

Lot 6 - 3.00 +/- Acres Price: \$190,000

The information contained herein has been supplied to us by the owner of this property or by a third party. Tom Shaw Realtors does not guarantee its accuracy and recommends buyers or tenant to verify all information herein and to obtain a full boundary survey before buying said home or property. **PRICES AND SPECIFICATIONS ARE SUBJECT TO CHANGE WITHOUT NOTICE**



The information contained herein has been supplied to us by the owner of this property or by a third party. Tom Shaw Realtors does not guarantee its accuracy and recommends buyers or tenant to verify all information herein and to obtain a full boundary survey before buying said home or property. **PRICES AND SPECIFICATIONS ARE SUBJECT TO CHANGE WITHOUT NOTICE**