

*New Ballwin Rd.
Ballwin, Mo 63021*

SALE PRICE: \$99,900



*Matt Shaw
(314) 503-4872
matt@shawrealtors.com*

This lot has not been approved yet by St. Louis County. Contract will have to be contingent on approval by St. Louis County.

DIRECTIONS:

New Ballwin Road south of Castlewood State Park to property on left before the wildlife center.



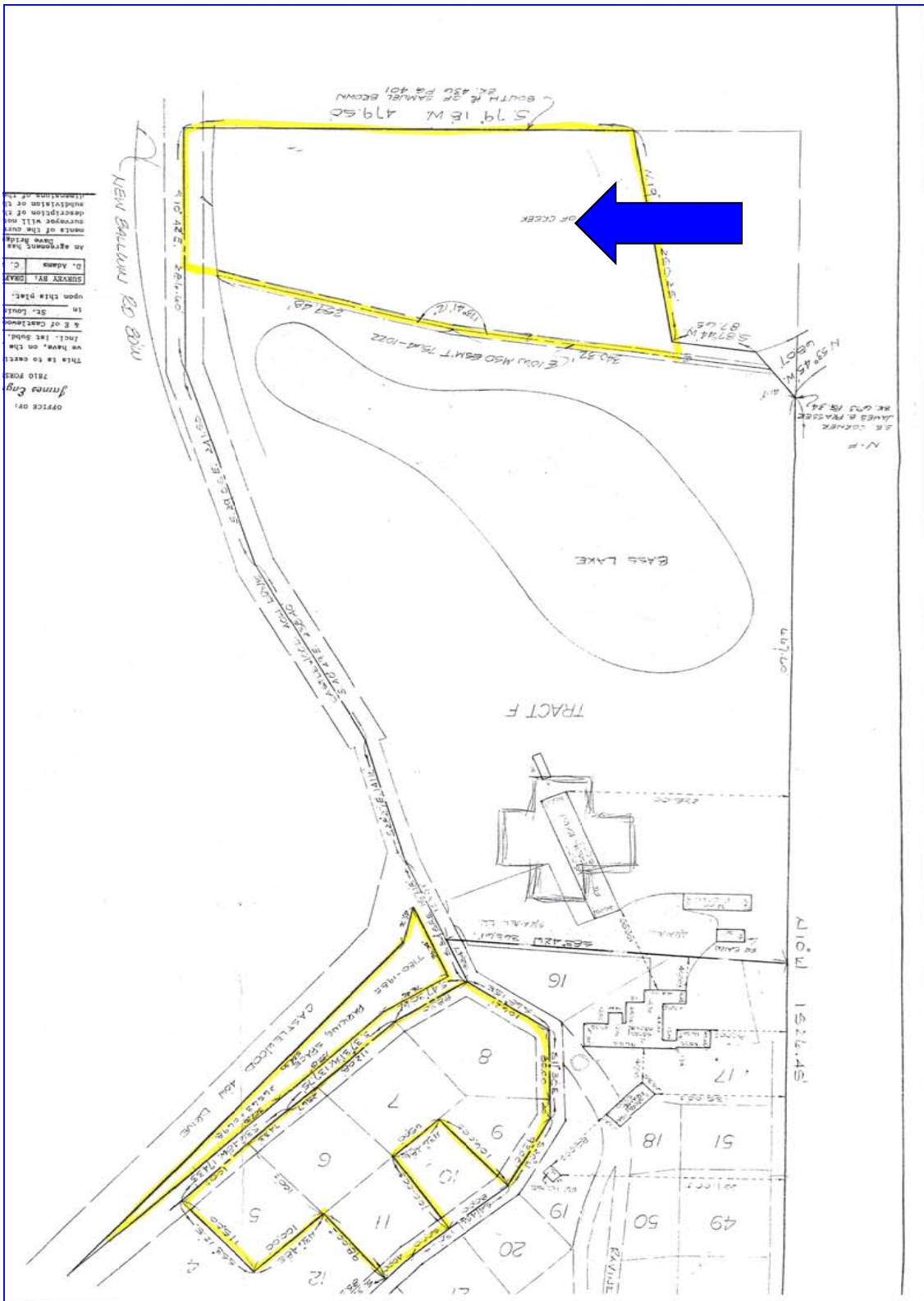
200 Long Road ♦ Suite 160 ♦ Chesterfield, Missouri 63005

Office: (636) 532-1922 ♦ Fax: (636) 532-0222 ♦ info@shawrealtors.com ♦ www.shawrealtors.com



Area Information / Property Description

County	St. Louis
Subdivision	None
School District	Rockwood
High School	Marquette
Middle School	Selvige
Elementary School	Rockwod
Lot Size	2.75± Acres
Lot Description	Natural State, Some Trees
Street Access	County
Taxes	\$ To Be Assessed
Associations Fees & Restrictions	None
Utilities	Water: Public Electric: Yes Phone: Yes Sewer: Public



The information contained herein has been supplied to us by the owner of this property or by a third party. Tom Shaw Realtors does not guarantee its accuracy and recommends buyers or tenant to verify all information herein and to obtain a full boundary survey before buying said home or property. **PRICES AND SPECIFICATIONS ARE SUBJECT TO CHANGE WITHOUT NOTICE**