

*27± Acres
Morrison Rd.
St. Charles, Mo 63348*

SALE PRICE: \$486,000



*Tom Shaw Jr.
(314) 283-5064
tomshawjr@yahoo.com*

GREAT LOOKING 19AC FOR HORSES, SMALL FAMILY FARM VERY PRIVATE MUST SEE FRONTAGE ON MORRISON AND MEINERSHAGEN OWNERS MAY SELL OFF 8AC OR 19AC TRACT AS PER PLAT

DIRECTIONS:

*HWY N WEST OF HWY T 2MI TO MORRISON TO TO
PROPERTY EAST SIDE OF MORRISON SEE SIGN OR
HWY N WEST OF HWY Z 4MI TO MORRISON*



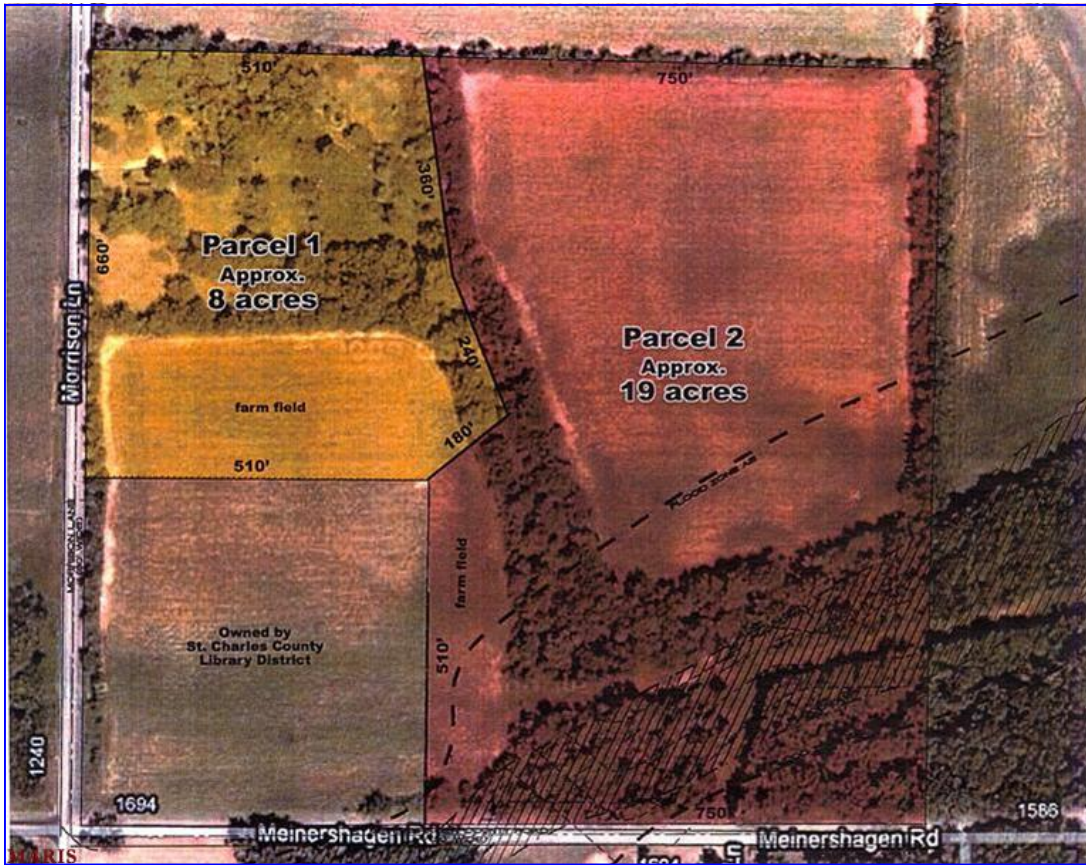
200 Long Road ♦ Suite 160 ♦ Chesterfield, Missouri 63005

Office: (636) 532-1922 ♦ Fax: (636) 532-0222 ♦ info@shawrealtors.com ♦ www.shawrealtors.com



Area Information / Property Description

County	St. Charles
Subdivision	None
School District	Wentzville
High School	Timberland
Middle School	Wentzville
Elementary School	Wentzville
Lot Size	27± Acres
Lot Description	Pasture, Horses, Wooded, Flood Plain
Street Access	County
Taxes	\$
Associations Fees & Restrictions	None
Utilities	Water: None Electric: Yes Phone: Yes Sewer: None



The information contained herein has been supplied to us by the owner of this property or by a third party. Tom Shaw Realtors does not guarantee its accuracy and recommends buyers or tenant to verify all information herein and to obtain a full boundary survey before buying said home or property. **PRICES AND SPECIFICATIONS ARE SUBJECT TO CHANGE WITHOUT NOTICE**