

18414 Melrose Rd Wildwood, Mo 63069

SALE PRICE: \$425,000



Contact

*Karen Burns
(314) 920-3131
karenburns11@aol.com*

HORSE LOVERS!!!! LOCATION, LOCATION, LOCATION. BEAUTIFUL 6.69± ACRES OPEN ESTABLISHED PASTURE IN THE HEART OF HORSE COUNTRY. PVC fencing along Melrose. NO ROAD FEES, architectural approval req'd. Great access to Hwy 100 or Hwy 44 at Six. Flags. Surrounded by large horse estates, very close to PARK bridle trails. One-of-kind property

DIRECTIONS:

*WY 100 west of Hwy 109 to left on Melrose Rd to 3rd property on right** OR **Hwy 44 to Allenton/Six Flags Rd right to the T at Melrose, left on Melrose to 3rd property on left. Spot to pull off road at that south corner. Don't drive wet fields! OK to walk*



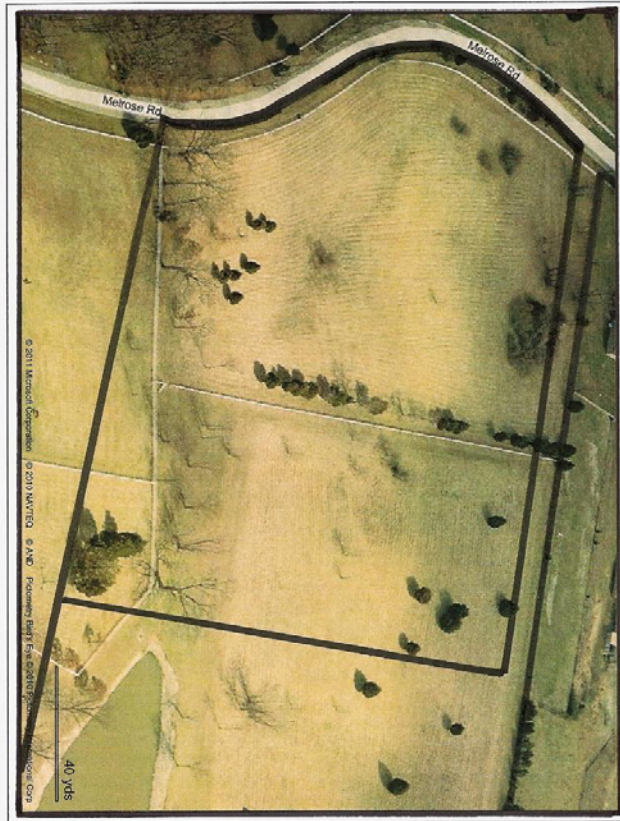
17813 Edison Ave. Suite 200 ♦ Chesterfield, Missouri 63005

Office: (636) 532-1922 ♦ Fax: (636) 532-0222 ♦ info@shawrealtors.com ♦ www.shawrealtors.com



Area Information / Property Description

County	St. Louis
Subdivision	WIND-N-PINE
School District	Rockwood
High School	Eureka
Middle School	La Salle
Elementary School	Pond
Lot Size	6.69± Acres
Lot Description	Suitable for Horses, Pond Rolling Pasture
Street Access	Asphalt
Taxes	\$ To Be Assessed 2010
Associations Fees & Restrictions	None
Utilities	Water: None Electric: Yes Phone: Yes Sewer: None



MARIS



The information contained herein has been supplied to us by the owner of this property or by a third party. Tom Shaw Realtors does not guarantee its accuracy and recommends buyers or tenant to verify all information herein and to obtain a full boundary survey before buying said home or property. **PRICES AND SPECIFICATIONS ARE SUBJECT TO CHANGE WITHOUT NOTICE**