

***60± Acres McHugh
St. Charles, Mo 63385***

SALE PRICE: \$1,440,000



*Tom Shaw Jr.
(314) 283-5064
tomshawjr@yahoo.com*

**GREAT LONG TERM INVESTMENTS FAMILY COM-
POUND HORSES ETC GREAT LAKE SITE INVEST IN
THE LONG TERM FURTER OF ST CHARLES COUNTY**

DIRECTIONS:

Hwy 70 TO HWT T SOUTH 3MI TO FORISTELL RD ON CORNER
CALL AGENT NEED FOR BETTER



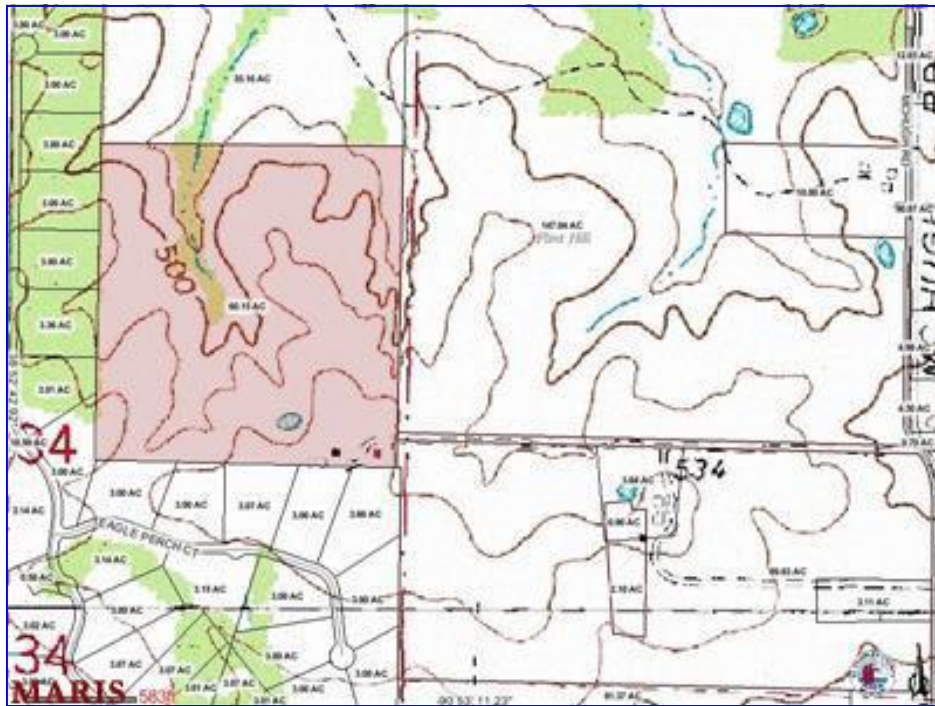
200 Long Road ♦ Suite 160 ♦ Chesterfield, Missouri 63005

Office: (636) 532-1922 ♦ Fax: (636) 532-0222 ♦ info@shawrealtors.com ♦ www.shawrealtors.com



Area Information / Property Description

County	St. Charles
Subdivision	None
School District	Wentzville
High School	Holt
Middle School	Wentzville
Elementary School	Wentzville
Lot Size	60± Acres
Lot Description	Level Lot
Street Access	Asphalt
Taxes	To Be Assessed
Associations Fees & Restrictions	None
Utilities	Water: None Electric: Yes Phone: Yes Sewer: None



The information contained herein has been supplied to us by the owner of this property or by a third party. Tom Shaw Realtors does not guarantee its accuracy and recommends buyers or tenant to verify all information herein and to obtain a full boundary survey before buying said home or property. **PRICES AND SPECIFICATIONS ARE SUBJECT TO CHANGE WITHOUT NOTICE**