

FOR SALE

**17715 Manchester Rd.
Wildwood, Mo. 63038**

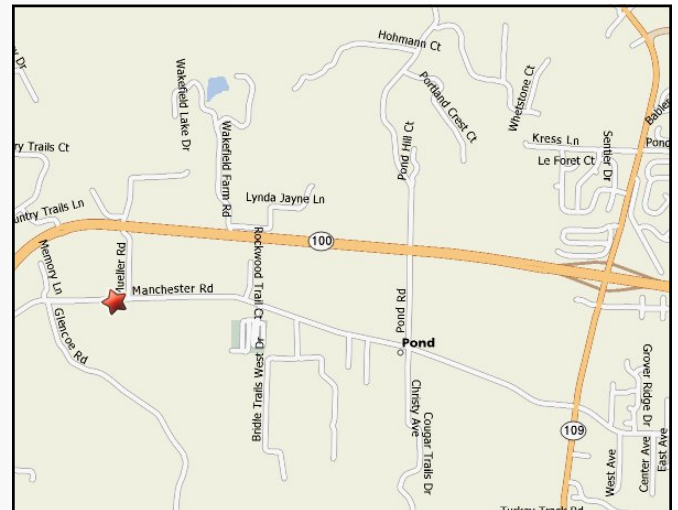


SALE PRICE: \$1,558,000

38.95± Acres
High Visibility
Prime Development Area
Excellent for Church, Private School or
1031 Tax Exchange
Rockwood School District

DIRECTIONS:

From Hwy 100 west of Hwy 109 to left on Mueller Rd. Property starts on right side of Mueller Rd. follow it until you come to Manchester rd. turn right to first driveway on right.



Tom Shaw Jr.

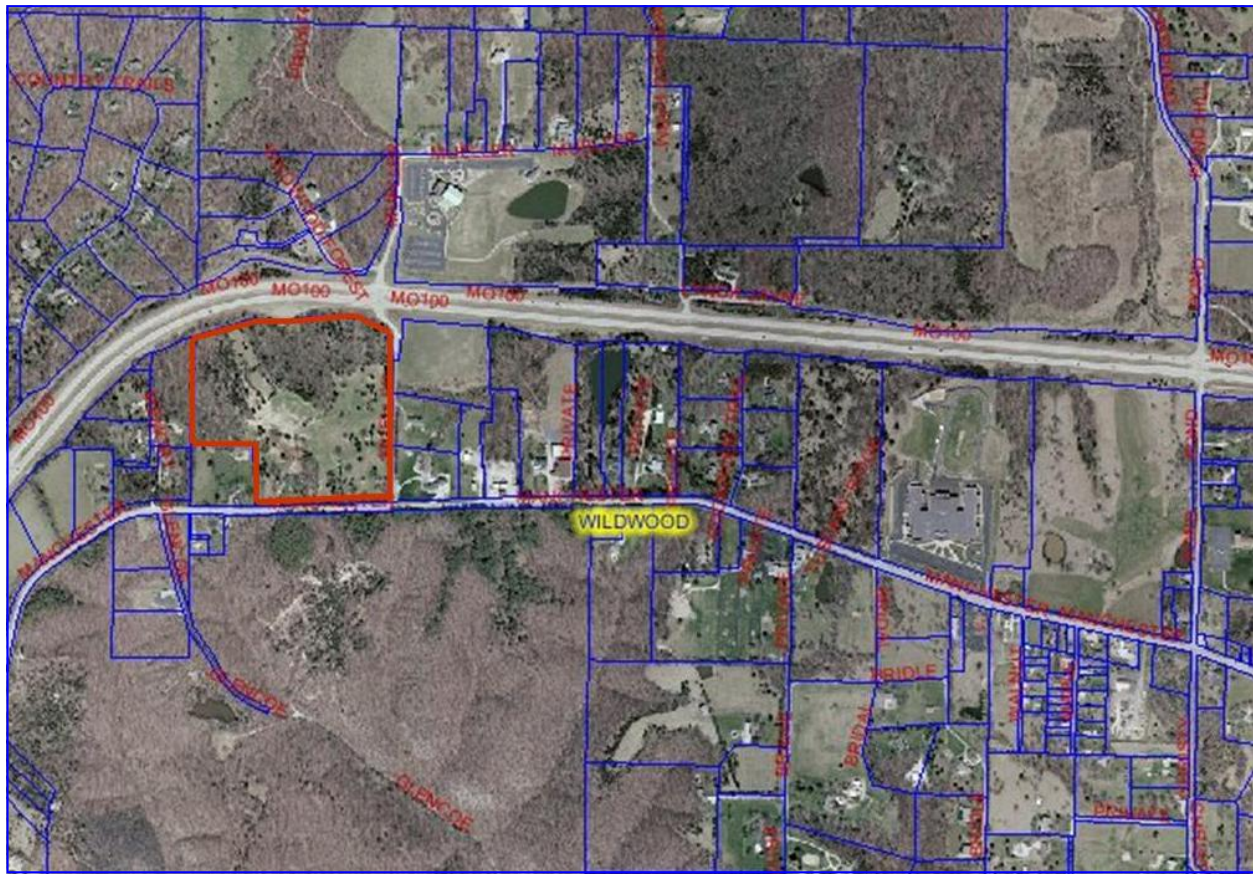
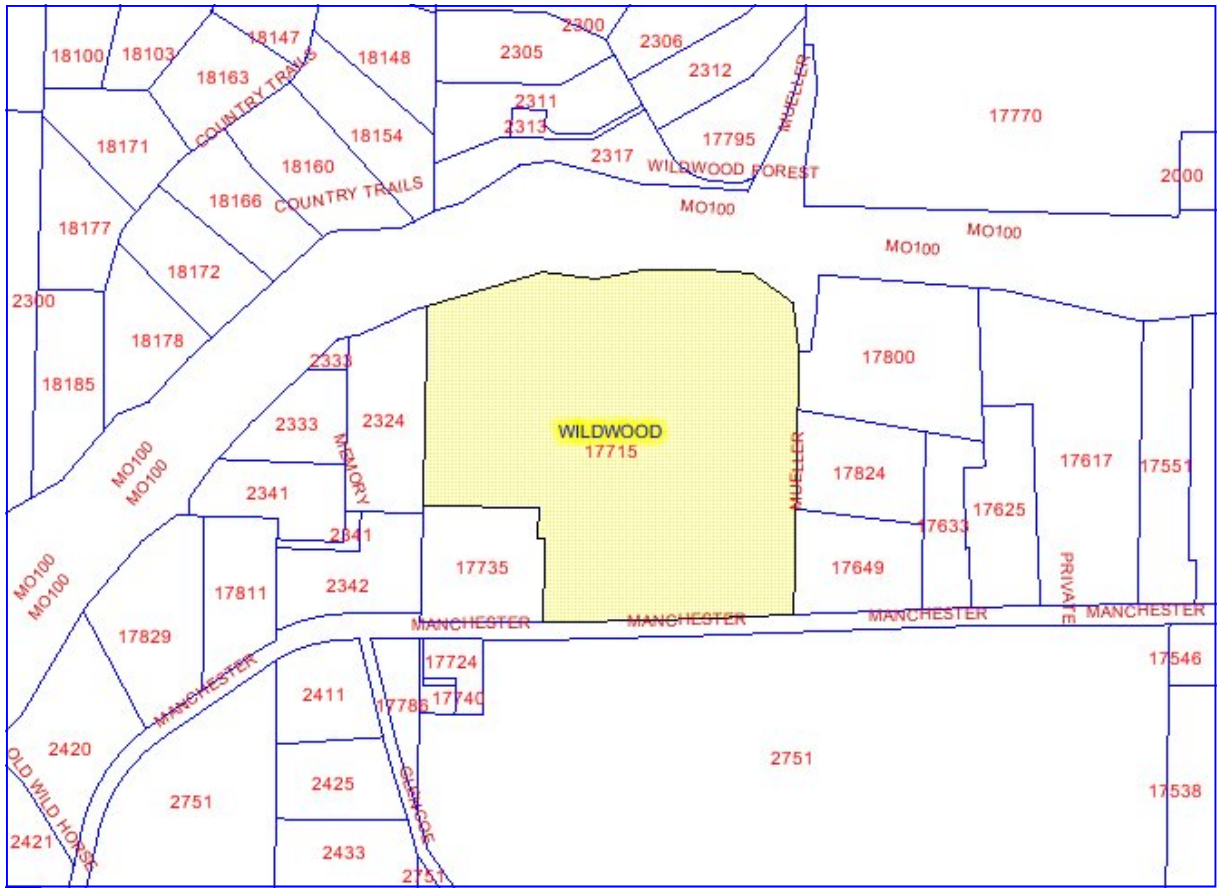
Contact: (314) 283-5064

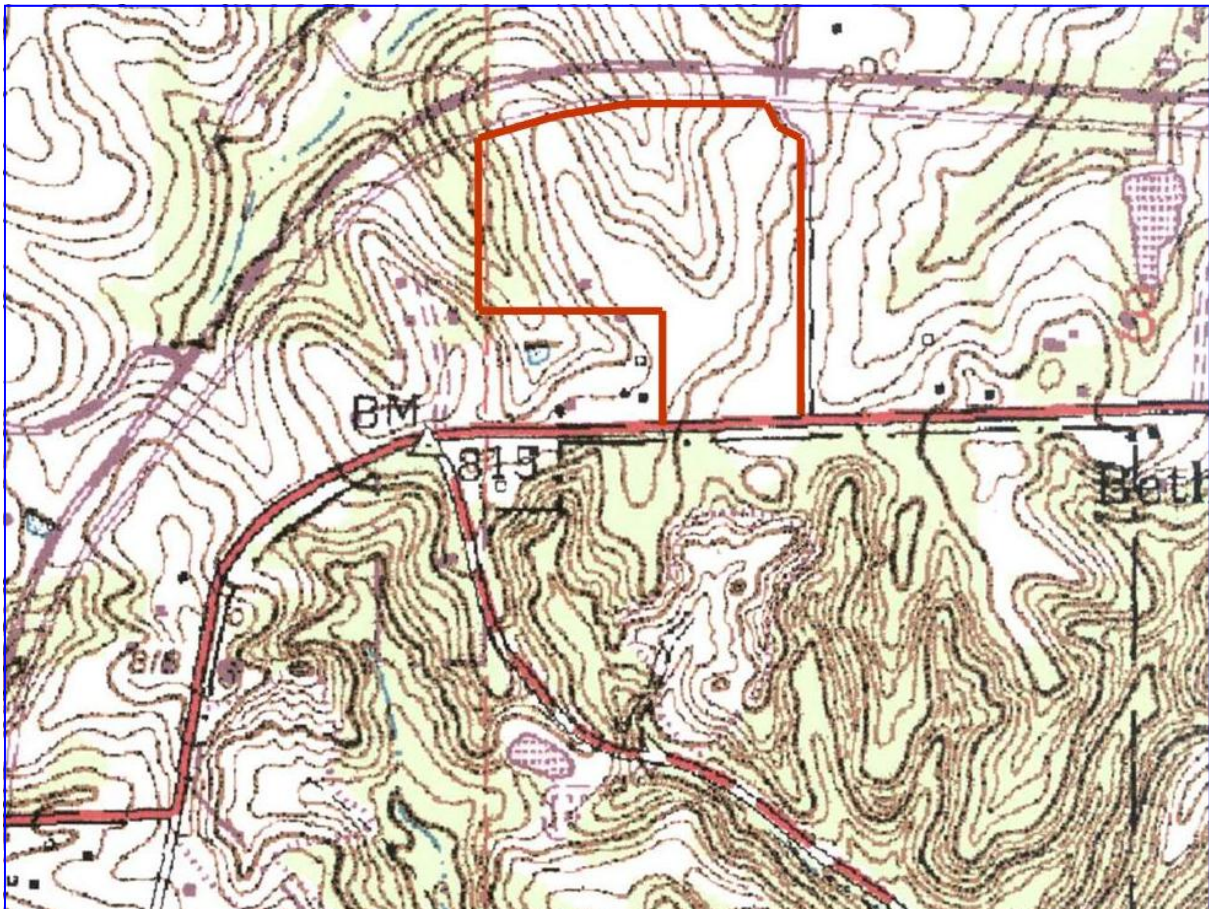
tshawjr@shawrealtors.com



200 Long Road ♦ Suite 160 ♦ Chesterfield, Missouri 63005

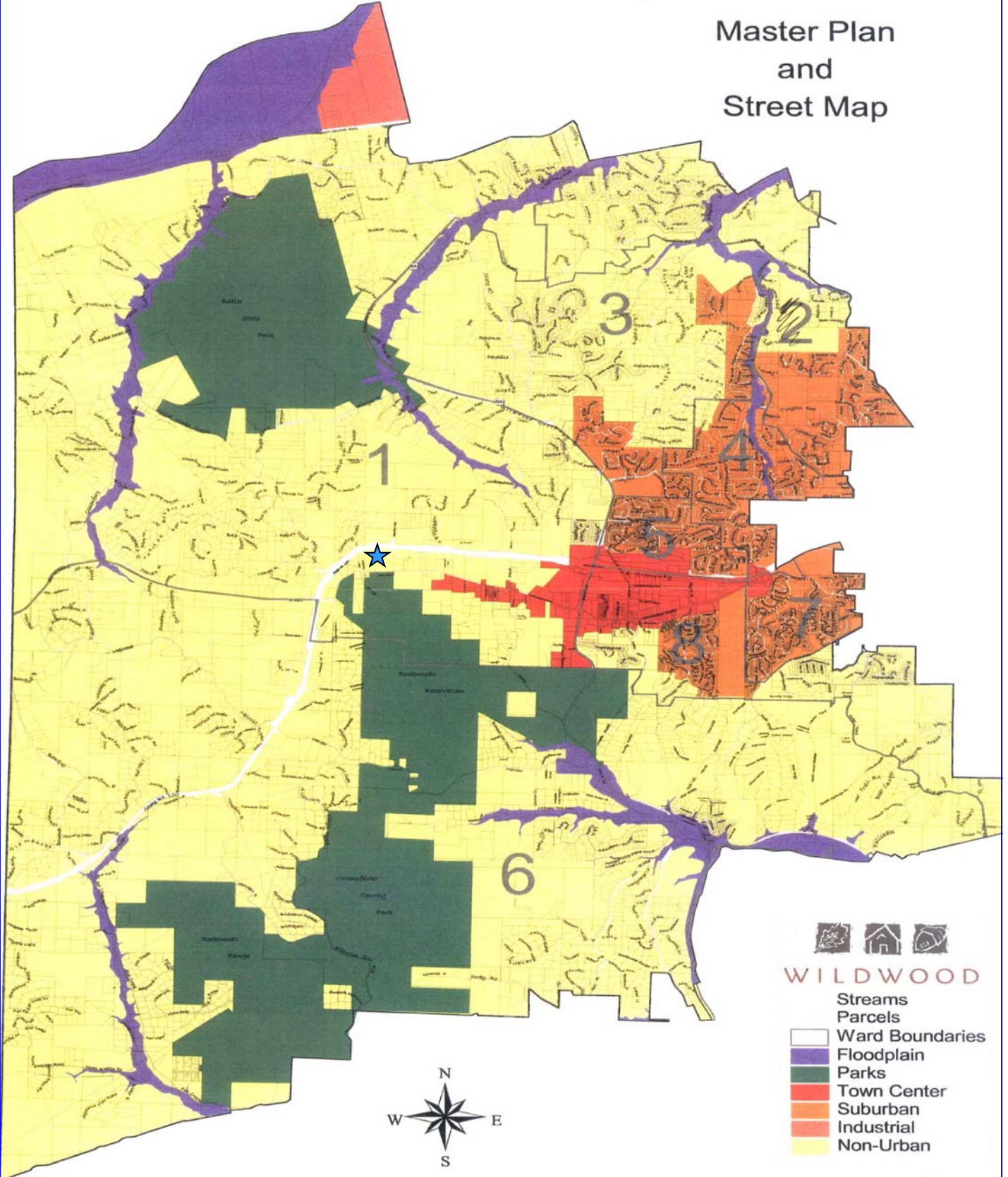
Office: (636) 532-1922 ♦ Fax: (636) 532-0222 ♦ info@shawrealtors.com ♦ www.shawrealtors.com






CITY OF WILDWOOD, MISSOURI

Master Plan and Street Map




WILDWOOD
Streams
Parcels
Ward Boundaries
Floodplain
Parks
Town Center
Suburban
Industrial
Non-Urban

*Prepared by the City of Wildwood
Department of Planning
St. Louis County, Missouri
Created: October 1999
Revised: 4/00, 9/01, 8/02