

16800 Manchester Rd. Wildwood, Mo 63040

SALE PRICE: \$138,000



Barb Lawless

(314) 662-2554

babs@shawrealtors.com.



This property is going to be a new district designated by the City of Wildwood as a mix of commercial, residential, and institutional land use.

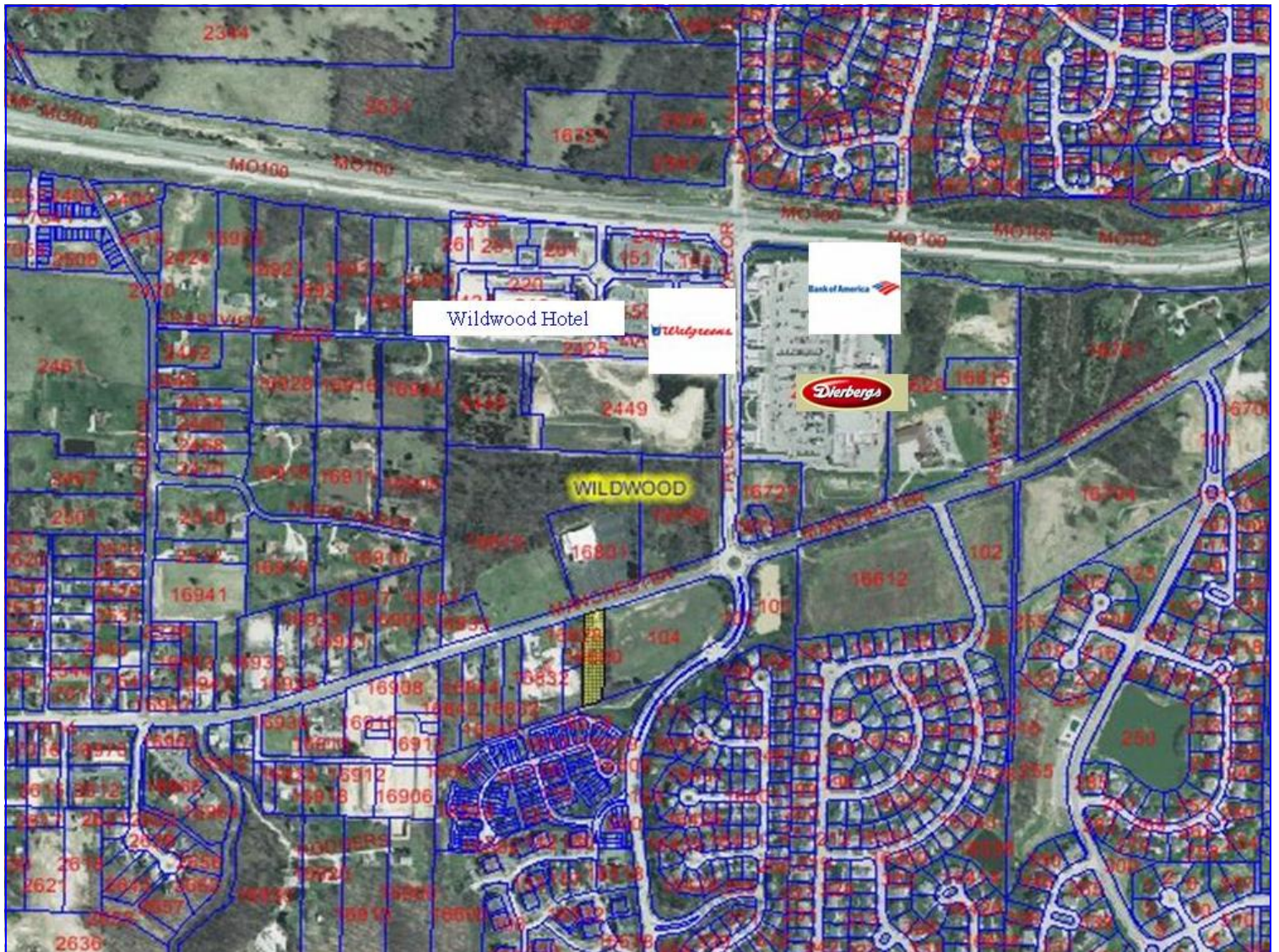
DIRECTIONS:

Manchester west pass Old State Rd. to left on Old Manchester, pass the round about to property on the left.



17813 EDISON AVE. ♦ Suite 200 ♦ Chesterfield, Missouri 63005

Office: (636) 532-1922 ♦ Fax: (636) 532-0222 ♦ info@shawrealtors.com ♦ www.shawrealtors.com



The information contained herein has been supplied to us by the owner of this property or by a third party. Tom Shaw Realtors does not guarantee its accuracy and recommends buyers or tenant to verify all information herein and to obtain a full boundary survey before buying said home or property. **PRICES AND SPECIFICATIONS ARE SUBJECT TO CHANGE WITHOUT NOTICE**



The information contained herein has been supplied to us by the owner of this property or by a third party. Tom Shaw Realtors does not guarantee its accuracy and recommends buyers or tenant to verify all information herein and to obtain a full boundary survey before buying said home or property. **PRICES AND SPECIFICATIONS ARE SUBJECT TO CHANGE WITHOUT NOTICE**