

*16841 Manchester Rd.  
Wildwood, Mo 63040*

***SALE PRICE: \$499,900***



*Cathy Shaw Connely*

*(636) 346-4960*

*Sqwawky1@aol.com.*

*Matt Shaw*

*314-50.-4872*

*matt@shawrealtors.com*



*Great commercial location in downtown  
Wildwood!!*

**DIRECTIONS:**

*Manchester Road west to property on  
right!!*



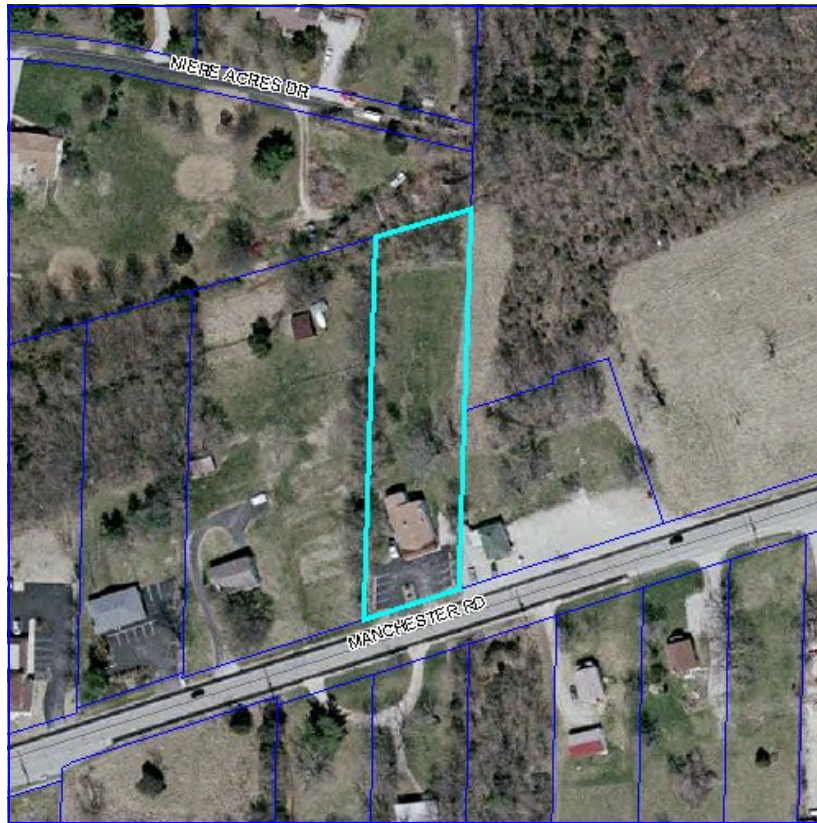
200 Long Road ♦ Suite 160 ♦ Chesterfield, Missouri 63005

Office: (636) 532-1922 ♦ Fax: (636) 532-0222 ♦ info@shawrealtors.com ♦ www.shawrealtors.com

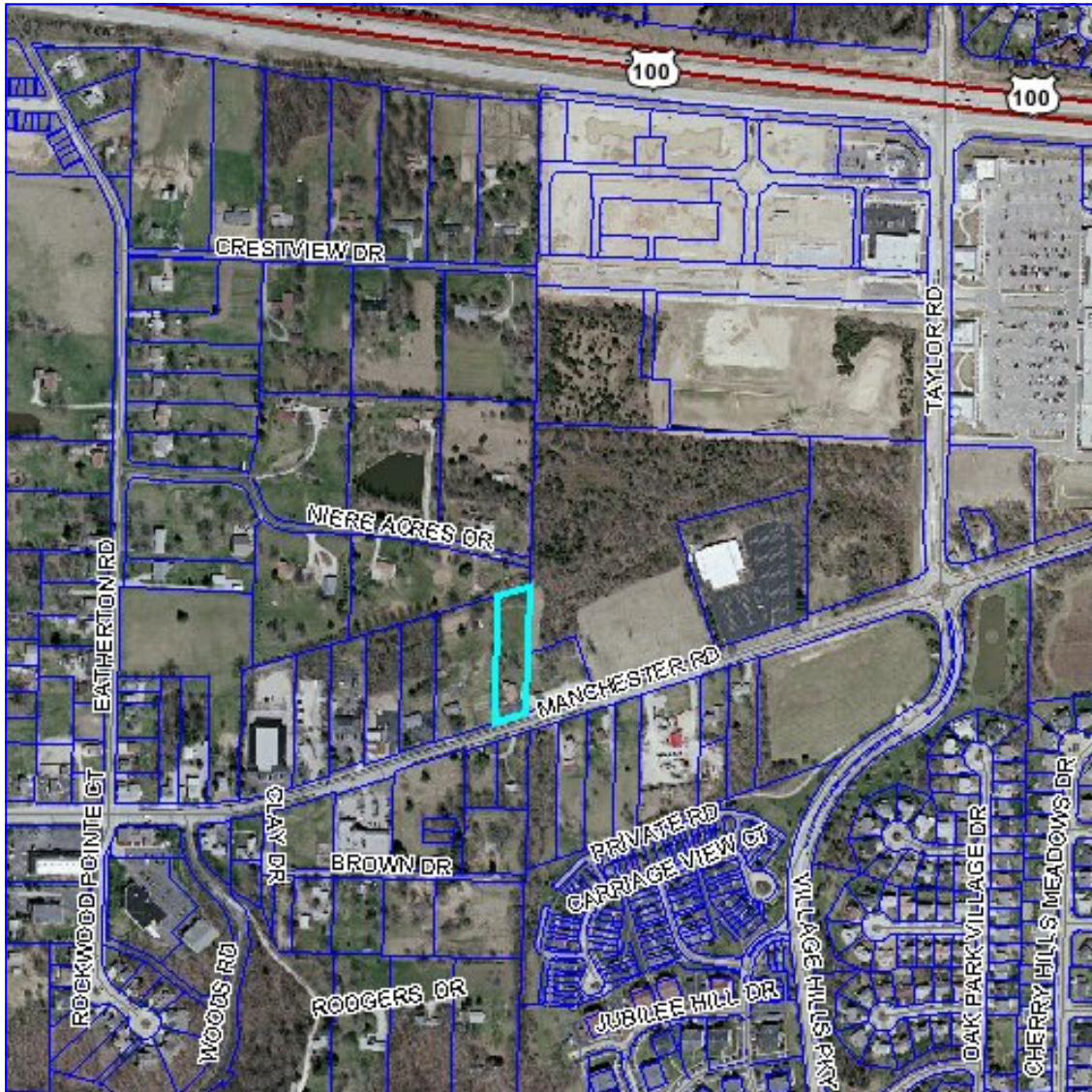


### Area Information / Property Description

County	St. Louis
Subdivision	None
Zoning	C-3 Medical
Possible Uses	Commercial
Building Size	
Parking	Parking Lot
Lot Size	1.05± Acres
Lot Description	Level Lot
Street Access	Manchester Rd.
Taxes	\$ 7,601    Year 2009
Associations Fees & Restrictions	None
Utilities	Water: Public Electric: Yes, Phone: Yes Sewer: Septic



The information contained herein has been supplied to us by the owner of this property or by a third party. Tom Shaw Realtors does not guarantee its accuracy and recommends buyers or tenant to verify all information herein and to obtain a full boundary survey before buying said home or property. **PRICES AND SPECIFICATIONS ARE SUBJECT TO CHANGE WITHOUT NOTICE**



The information contained herein has been supplied to us by the owner of this property or by a third party. Tom Shaw Realtors does not guarantee its accuracy and recommends buyers or tenant to verify all information herein and to obtain a full boundary survey before buying said home or property. **PRICES AND SPECIFICATIONS ARE SUBJECT TO CHANGE WITHOUT NOTICE**