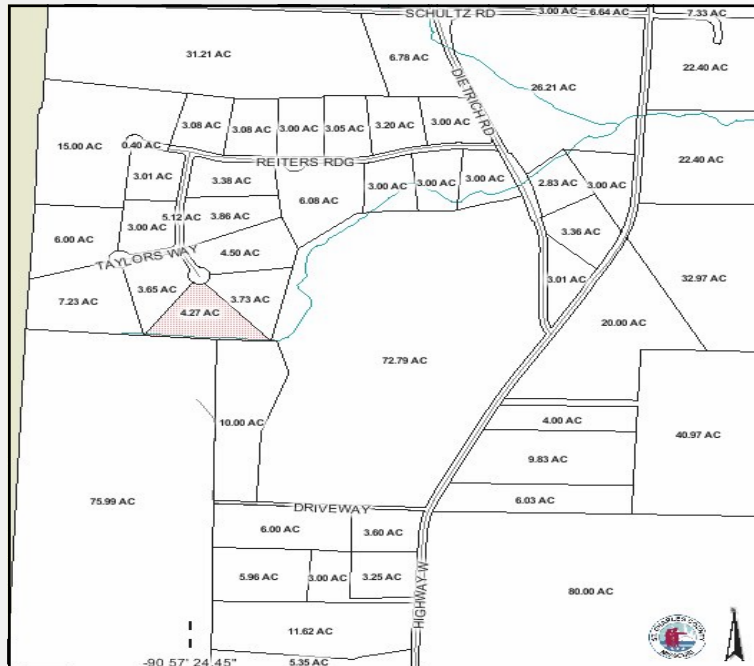


# *Dietrich Crossing*

*207 Logan Ct.*

*Foristell, Mo 63348*

***SALE PRICE: \$79,900***



*Contact*

*Cathy Shaw-Connelly*

*(636) 346-4960*

*squawky1@aol.com*

*Tom Shaw Jr.*

*(314) 283-5064*

*tomshawjr@yahoo.com*

**NEW END OF SUMMER PRICES! Attractive Owner Financing available! Buy now & build now or build later and use your own builder! AMAZING HOME-SITE at the end of a Beautiful, private cul-de-sac. Awesome Custom Home development. Wooded lot. Privacy and your own private forest!! Surrounded by Custom Luxury! Utilities on site. (Located at the end of the cul-de-sac on Logan's Ct.)**

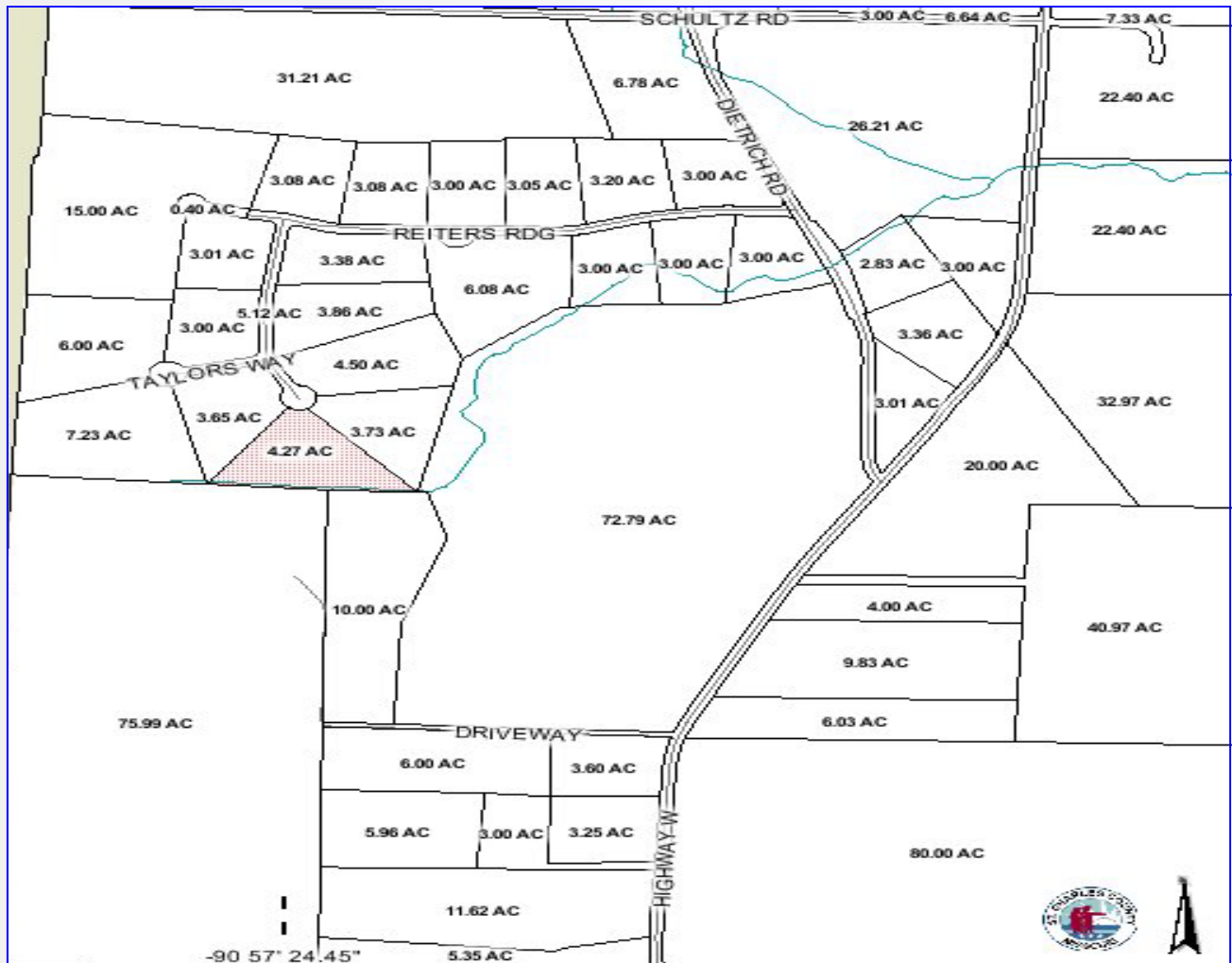
**DIRECTIONS:**

*I-70 West to Foristell. Exit right/North on Hwy W. Left on Dietrich Road, and Left into beautiful Dietrich Crossing (Reiter's Ridge), then Left on Logan's Ct. Lot at end of cul-de-sac.*



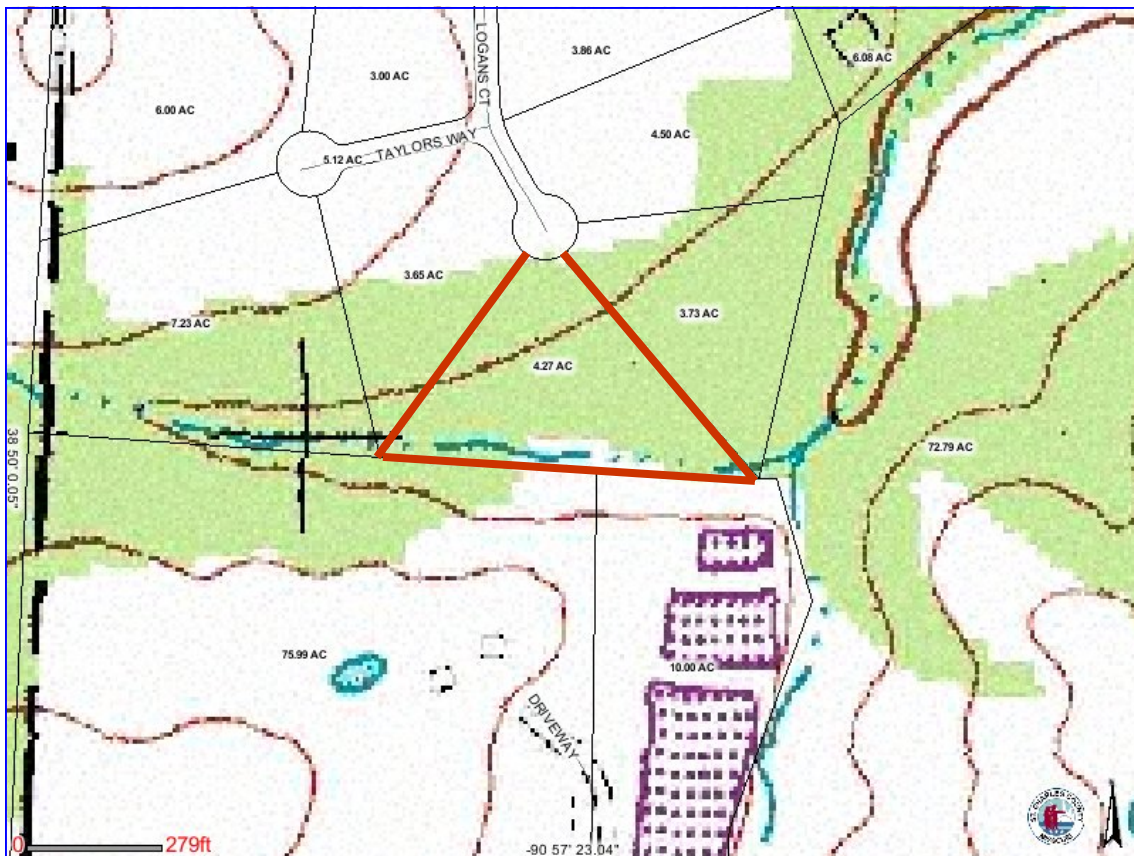
17813 Edison Ave. Suite 200 ♦ Chesterfield, Missouri 63005

Office: (636) 532-1922 ♦ Fax: (636) 532-0222 ♦ info@shawrealtors.com ♦ www.shawrealtors.com



### Area Information / Property Description

County	St. Charles
Subdivision	Dietrich Crossing
School District	Wentzville
High School	Holt
Middle School	Wentzville Middle
Elementary School	Heritage
Lot Size	3.00± Acres
Lot Description	Corner Lot, Cul-de-sac, Gently Rolling, Some Trees
Street Access	Concrete
Taxes	\$ 848.06     2010
Associations Fees & Restrictions	None
Utilities	Water: Public Electric: Yes Phone: Yes Sewer: Public



The information contained herein has been supplied to us by the owner of this property or by a third party. Tom Shaw Realtors does not guarantee its accuracy and recommends buyers or tenant to verify all information herein and to obtain a full boundary survey before buying said home or property. **PRICES AND SPECIFICATIONS ARE SUBJECT TO CHANGE WITHOUT NOTICE**