

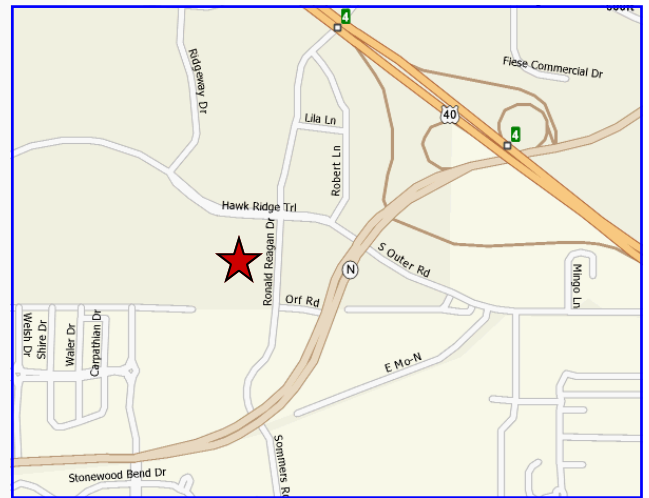
FOR SALE

**177± Acres Hawk Ridge Dr.
Lake St. Louis, Mo. 63367**



SALE PRICE: \$30,840,911*

*** \$4.00 PER A SQ. FT.
177± ACRES
PLANNED COMMERCIAL
BEHIND THE NEW SUPER WALMART &
LOWE'S STORES
EASY ACCESS TO HWY 40 / 61
CITY OF LAKE ST. LOUIS**



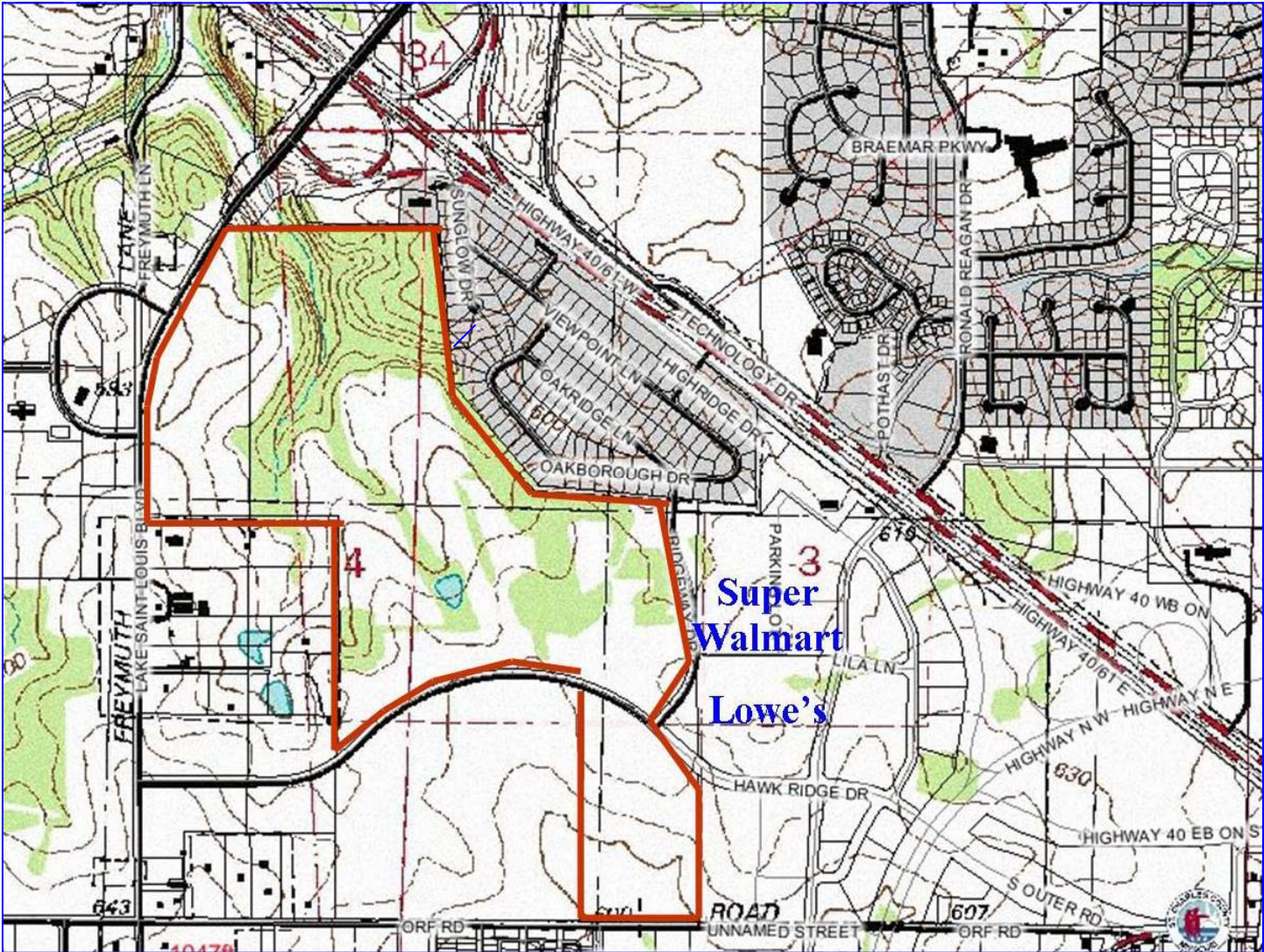
DIRECTIONS: From Hwy 40 / 61 to Hwy N exit
turn right on Hawk Ridge to just past Lowes
to sign on left & right

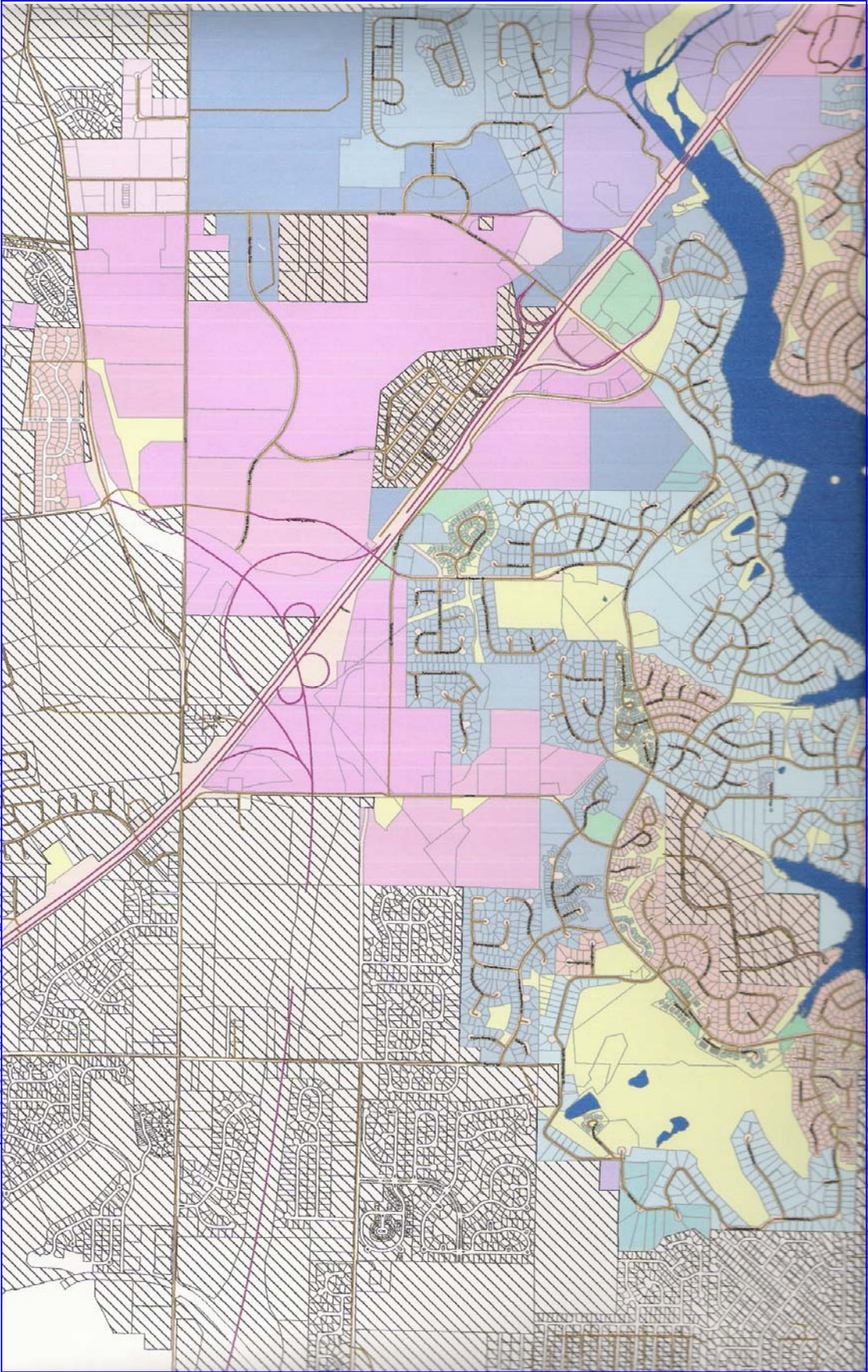
Contact: *Tom Shaw Jr.* & *Chip DeWitt*
(314) 283-5064 (314) 503-3619
tomjr@shawrealtors.com chip@shawrealtors.com



200 Long Road ♦ Suite 160 ♦ Chesterfield, Missouri 63005

Office: (636) 532-1922 ♦ Fax: (636) 532-0222 ♦ info@shawrealtors.com ♦ www.shawrealtors.com





Legend

Zoning

<all other values>

Zoning_code

- Business Park
- Community Business (Comm)
- Highway Commercial
- Light Industrial
- Multi-Family Residential
- Non Urban
- Office Park
- Parcels Outside of City Limit
- Planned Development
- Planned Residential