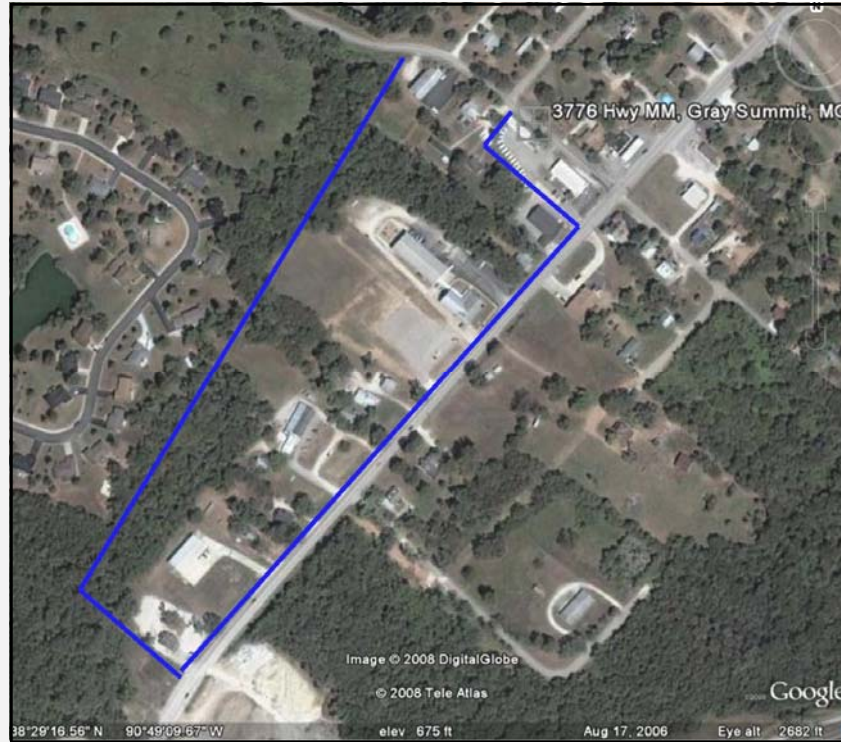


FOR SALE

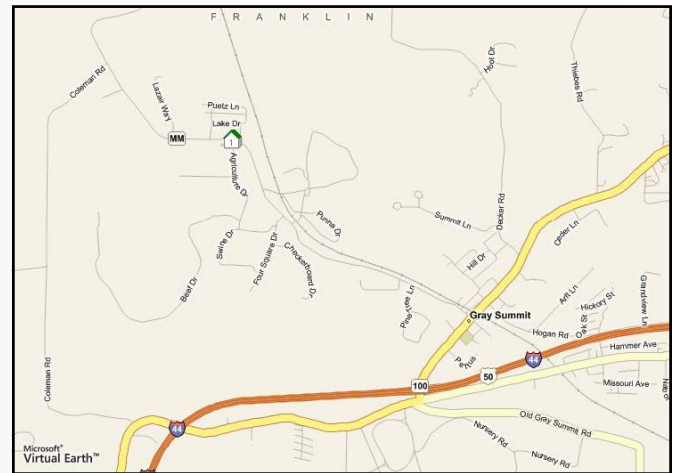
**3776 Highway MM
Gray Summit, Mo. 63039**



SALE PRICE: \$2,000,000

**14.0± ACRES
POTENTIAL COMMUNITY DEVELOPEMENT
COMMERCIAL USE SUCH AS APARTMENTS
PACIFIC SCHOOL DISTRICT**

DIRECTIONS: From Hwy 44 to Gray Summit exit to right on Hwy 100 to left on Hwy MM to property on right.



Cathy Shaw-Connely

(636) 283-3619

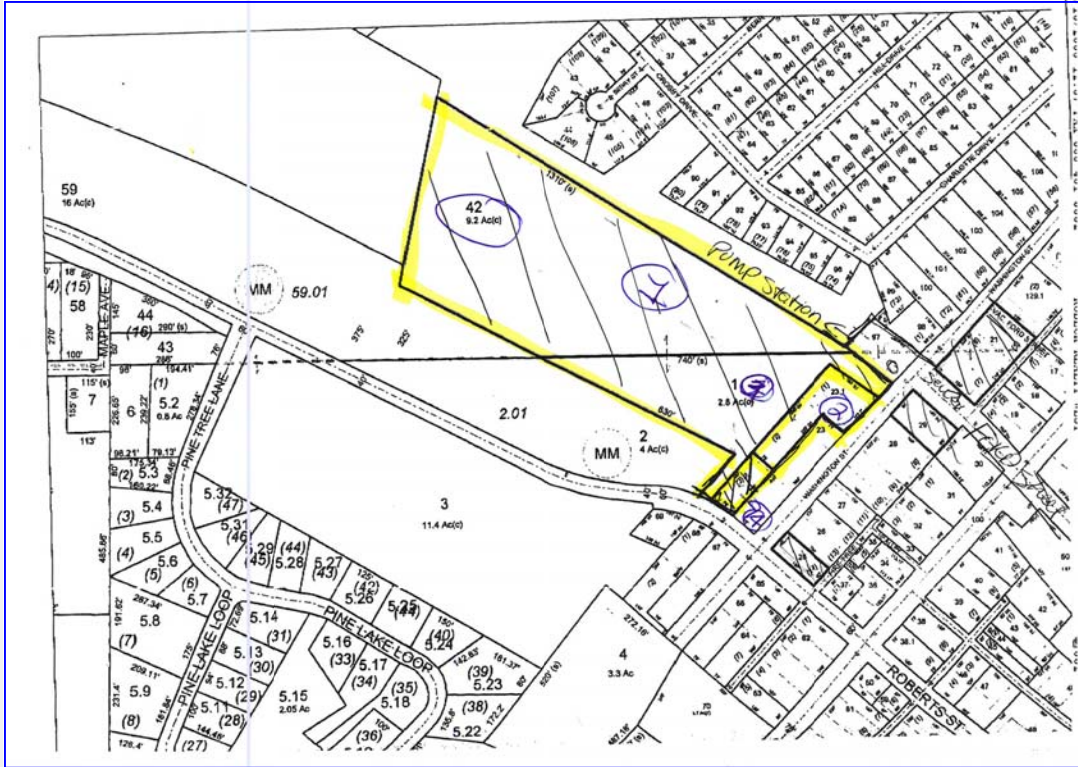
Squawkyl@aol.com

Contact:



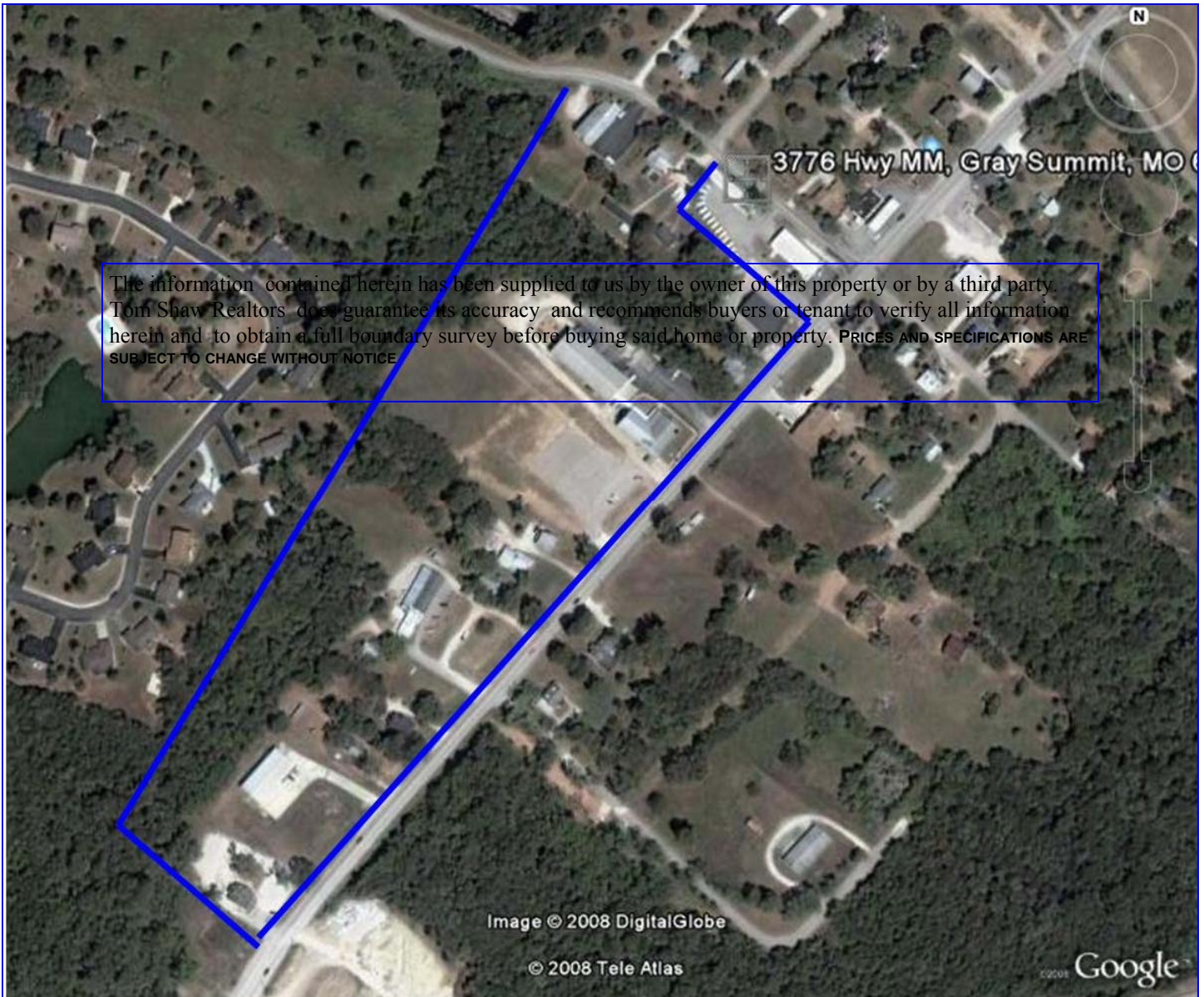
200 Long Road ♦ Suite 160 ♦ Chesterfield, Missouri 63005

Office: (636) 532-1922 ♦ Fax: (636) 532-0222 ♦ info@shawrealtors.com ♦ www.shawrealtors.com



Area Information / Property Description

County	Franklin		
Subdivision	None		
School District	Rockwood		
High School	Lafayette		
Middle School	Crestview		
Elementary School	Wild Horse		
Lot Size	12.33± Acres		
Lot Description			
Street Access	County / Paved		
Taxes	\$2,650.00		2007
Associations Fees & Restrictions	None		
Utilities	Water: Yes	/	Sewer: Septic
	Electric: Yes	/	Gas: None
	Phone: Yes	/	Cable: None



The information contained herein has been supplied to us by the owner of this property or by a third party. Tom Shaw Realtors does not guarantee its accuracy and recommends buyers or tenant to verify all information herein and to obtain a full boundary survey before buying said home or property. PRICES AND SPECIFICATIONS ARE SUBJECT TO CHANGE WITHOUT NOTICE

The information contained herein has been supplied to us by the owner of this property or by a third party. Tom Shaw Realtors does not guarantee its accuracy and recommends buyers or tenant to verify all information herein and to obtain a full boundary survey before buying said home or property. PRICES AND SPECIFICATIONS ARE SUBJECT TO CHANGE WITHOUT NOTICE