

287± Acres Hwy T Foristell, Mo. 63348

Sale Price: \$ 4,305,000



ONE OF A KIND LAKE MUST SEE GREAT FISHING
WALLEYE BASS ETC 25+/- ACRES LAKE VERY
CLEAN GREAT HUNTING THIS WILL MAKE A
GREAT FAMILY COMPOUND OWNER WILL
SELL OFF THE NORTHERN 77AC

**DIRECTIONS: HWY 70 TO HWY T SOUTH 2MI PROP-
ERTY ON EAST SIDE SEE SIGN HWY N WEST TO
HWY T NORTH 1MI TO PROPERTY**



Offered By:
Tom Shaw Jr.
(314) 283-5064
tomshawjr@yahoo.com

**TOM
SHAW**
REALTORS

17813 Edison Avenue . Chesterfield, MO 63005
CALL US AT (636) 532-1922

www.shawrealtors.com



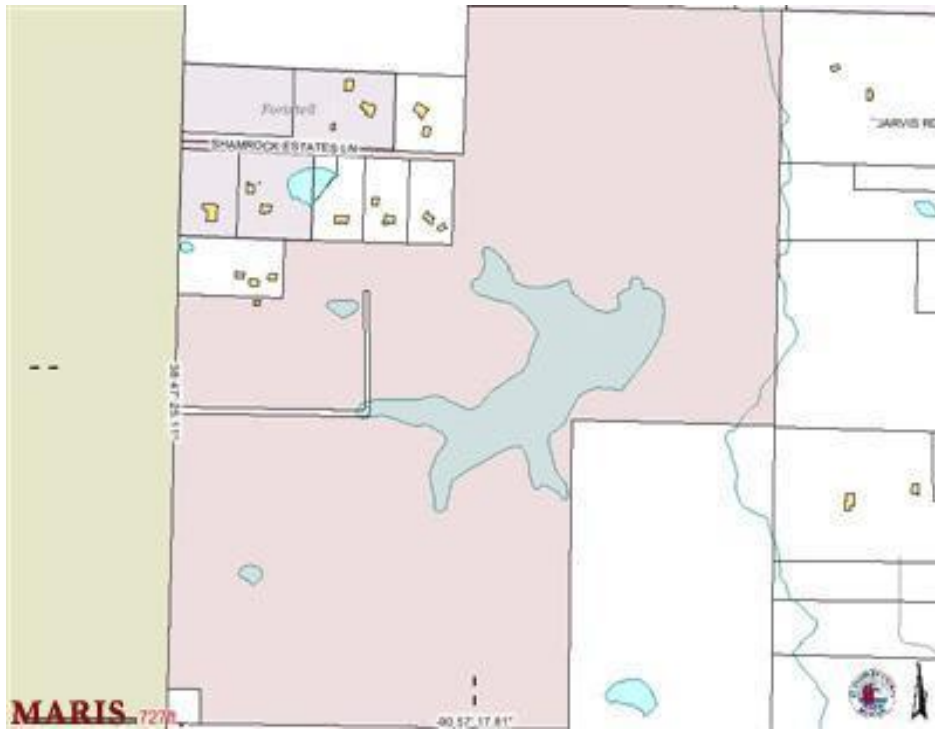
AREA INFORMATION/ PROPERTY DESCRIPTION:	
County:	St. Charles
Subdivision:	None
School District:	Wentzville
High School:	Wentzville
Middle School:	Wentzville
Elementary School:	Wentzville
Lot Size:	287± Acres
Lot Description:	Hilly, Pasture, Gently Rolling, Wooded
Street Access:	Asphalt
Taxes:	
Association Fees / Restrictions:	None
Water:	Lake Water
Electric:	Yes
Gas:	No
Telephone:	Yes
Sewer:	No

The information contained herein has been supplied to us by the owner of this property or by a third party. Tom Shaw Realtors does not guarantee its accuracy and recommends buyers or tenant to verify all information herein and to obtain a full boundary survey before buying said home or property. PRICES AND SPECIFICATIONS ARE SUBJECT TO CHANGE WITHOUT NOTICE



17813 Edison Avenue . Chesterfield, MO 63005
 CALL US AT (636) 532-1922

www.shawrealtors.com



TOM SHAW
REALTORS

17813 Edison Avenue . Chesterfield, MO 63005
CALL US AT (636) 532-1922

www.shawrealtors.com

