

South Hwy 94 Defiance, Mo. 63341

Sale Price: \$1,245,000



This is a great 48+ Ac weekend farm with fabulous views overlooking Missouri River Bottoms. Located in the heart of the Hwy. 94 Historic Wine District, this must-see 1890's two story farm house is perfect for a small winery or a wedding chapel.

STYLE	ROOMS	BEDROOMS	BATHS	GARAGE	LOT SIZE	SCHOOL DISTRICT
2 Story	6	4	4 Full		48.85 Acres	Washington

DIRECTIONS: Hwy 94 west of Hwy 64 through Defiance 1mi to property on right see sign



Offered By:

Tom Shaw Jr.

(314) 283-5064

Tom Shaw Jr.@Yahoo.com

Cathy Shaw Connely

(636) 346-4960

squawky1.aol.com

**TOM
SHAW
REALTORS**

17813 Edison Avenue . Chesterfield, MO 63005
CALL US AT (636) 532-1922

www.shawrealtors.com

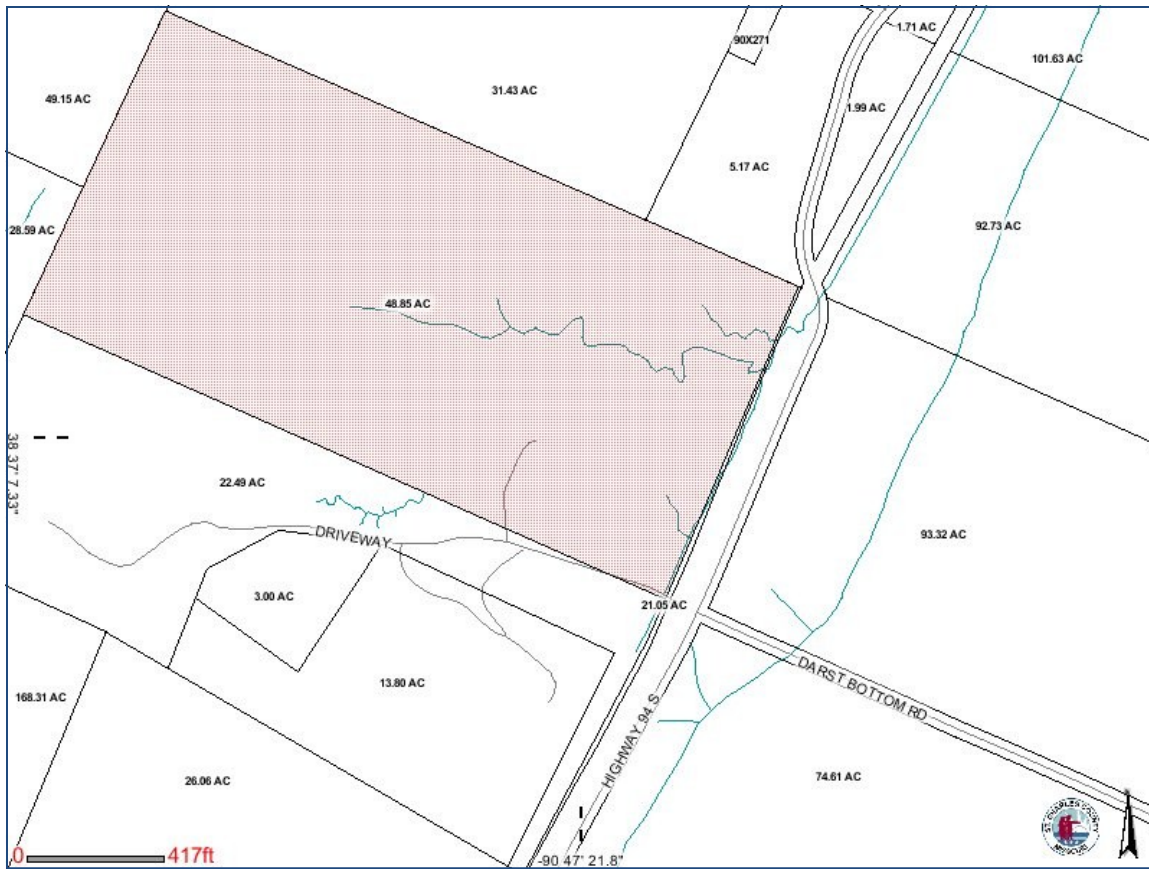


FAMILY ROOM	LIVING ROOM	GREAT ROOM	DINING ROOM	DEN	KITCHEN	BREAKFAST ROOM
N/A	20 X 15	N/A	N/A	N/A	15 X 15	N/A
MASTER BED	SITTING BEDROOM	GUEST BEDROOM	GUEST BEDROOM	GUEST BEDROOM	RECREATION ROOM	LAUNDRY ROOM
15 X 15	N/A	17 X 15	12 X 11	15 X 15	N/A	N/A

TOM SHAW REALTORS

17813 Edison Avenue . Chesterfield, MO 63005
 CALL US AT (636) 532-1922

www.shawrealtors.com



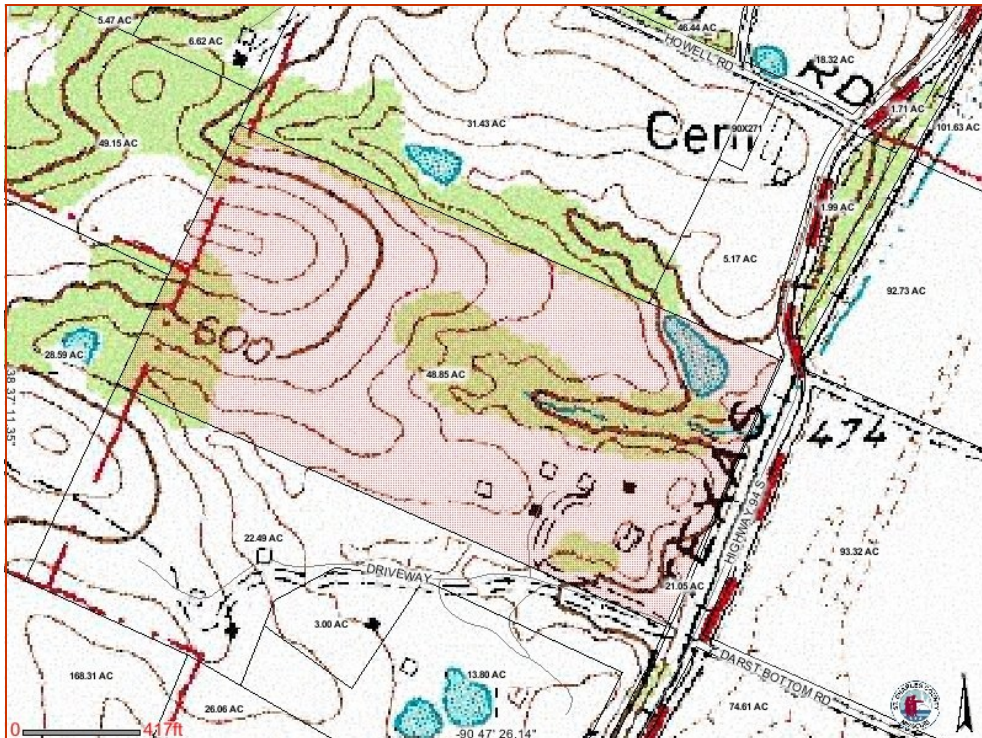
COUNTY	UTILITIES	SCHOOLS
St. Charles	Electric, Telephone, Well & Septic	High School: Washington Middle School: Washington Elementary: Augusta

The information contained herein has been supplied to us by the owner of this property or by a third party. Tom Shaw Realtors does not guarantee its accuracy and recommends buyers or tenant to verify all information herein and to obtain a full boundary survey before buying said home or property.
 PRICES AND SPECIFICATIONS ARE SUBJECT TO CHANGE
 WITHOUT NOTICE



17813 Edison Avenue . Chesterfield, MO 63005
 CALL US AT (636) 532-1922

www.shawrealtors.com



TOM SHAW REALTORS

17813 Edison Avenue . Chesterfield, MO 63005
 CALL US AT (636) 532-1922

www.shawrealtors.com