

**1205 Highway 109
Wildwood, Mo 63038**

SALE PRICE: \$284,900



Contact

Cathy Shaw Connley

(636) 346-4960

squawky1@aol.com

Chip DeWitt

314-503-3619

Chip@shawrealtors.com

OUTSTANDING STAND ALONE PROPERTY WITH 3 BEDROOM, 3 FULL BATHS UPDATED RANCH ON 3.849+/- ACRES SUITABLE FOR HORSES. MANY UPDATES LIGHT HARDWOOD FLOORS IN THE DINING ROOM. LIVING ROOM HAS RAISED HEARTH STONE FIREPLACE. KITCHEN HAS NEWER LIGHT OAK CABINETS, PLANNING DESK, TILE BACKSPLASH 21 X 7 MAIN FLOOR LAUNDRY / MUD ROOM. 12 X 12 SUNROOM OFF MASTERBEDROOM. OVERSIZE 3 CAR GARAGE. PLENTY OUTSIDE PARKING. LARGE INSULATED OUTBUILDING (192 SQ FT) IS ALL DRY-WALLED WITH HEAT & AC. IDEAL PROPERTY FOR A CONTRACTOR!

<i>STYLE</i>	<i>ROOMS</i>	<i>BEDROOMS</i>	<i>BATHS</i>	<i>GARAGE</i>	<i>LOT SIZE</i>	<i>SCHOOL DISTRICT</i>
RANCH	8	3	3 Full	4	3.849± ACRES	ROCKWOOD

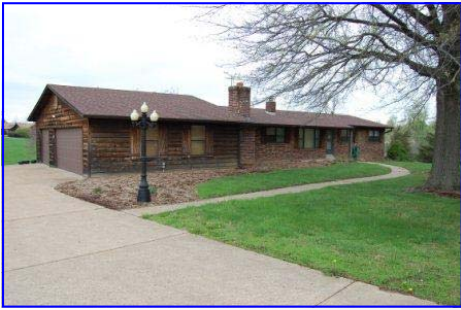
DIRECTIONS:

*WEST SIDE OF HWY 109 BETWEEN WILD HORSE CREEK RD AND
CLAYTON RD.*



200 Long Road ♦ Suite 160 ♦ Chesterfield, Missouri 63005

Office: (636) 532-1922 ♦ Fax: (636) 532-0222 ♦ info@shawrealtors.com ♦ www.shawrealtors.com



<i>FAMILY ROOM</i>	<i>GREAT ROOM</i>	<i>HEARTH ROOM</i>	<i>DINING ROOM</i>	<i>DEN</i>	<i>KITCHEN</i>	<i>BREAKFAST ROOM</i>
<i>21' X 17'</i>	<i>N/A</i>	<i>N/A</i>	<i>16' X 3'</i>	<i>N/A</i>	<i>16' X 12'</i>	<i>N/A</i>

<i>MASTER BEDROOM</i>	<i>SITTING BEDROOM</i>	<i>GUEST BEDROOM</i>	<i>GUEST BEDROOM</i>	<i>GUEST BEDROOM</i>	<i>SUN ROOM</i>	<i>LAUNDRY ROOM</i>
<i>13' X 11'</i>	<i>N/A</i>	<i>11' X 10'</i>	<i>14' X 13'</i>	<i>N/A</i>	<i>12' X 12'</i>	<i>21' X 7'</i>

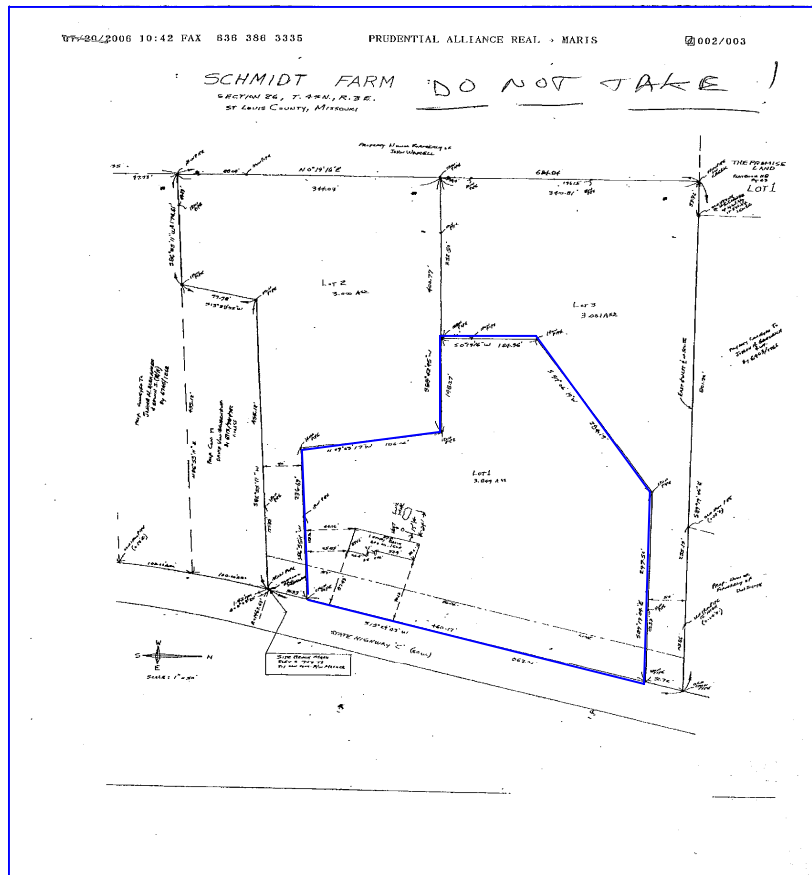
<i>CONSTRUCTION</i>	<i>AGE</i>	<i>HEATING</i>	<i>COOLING</i>	<i>FIRE-PLACES</i>	<i>LOT DESCRIPTION</i>	<i>AMENITIES</i>	<i>TAXES</i>	<i>ASSOCIATIONS FEES</i>
<i>BRICK VENEER CEDAR SIDING</i>	<i>41</i>	<i>GAS: FORCED AIR HUMIDIFIER</i>	<i>ELECTRIC: CENTRAL CEILING</i>	<i>1 WOOD BURNING</i>	<i>SUITABLE FOR HORSES GENTLY ROLLING</i>	<i>INSULATED OUTBUILDING</i>	<i>\$4,840.00</i> <i>2010</i>	<i>NONE</i>

<i>COUNTY</i>	<i>UTILITIES</i>	<i>SCHOOLS</i>
<i>ST. LOUIS</i>	<i>GAS,ELECTRIC, PHONE PUBLIC WATER & SEPTIC</i>	<i>HIGH SCHOOL: LAFAYETTE</i> <i>MIDDLE SCHOOL: ROCKWEED VALLEY</i> <i>ELEMENTARY: BABLER</i>

The information contained herein has been supplied to us by the owner of this property or by a third party. Tom Shaw Realtors does not guarantee its accuracy and recommends buyers or tenant to verify all information herein and to obtain a full boundary survey before buying said home or property. **PRICES AND SPECIFICATIONS ARE SUBJECT TO CHANGE WITHOUT NOTICE**



The information contained herein has been supplied to us by the owner of this property or by a third party. Tom Shaw Realtors does not guarantee its accuracy and recommends buyers or tenant to verify all information herein and to obtain a full boundary survey before buying said home or property. **PRICES AND SPECIFICATIONS ARE SUBJECT TO CHANGE WITHOUT NOTICE**



The information contained herein has been supplied to us by the owner of this property or by a third party. Tom Shaw Realtors does not guarantee its accuracy and recommends buyers or tenant to verify all information herein and to obtain a full boundary survey before buying said home or property. **PRICES AND SPECIFICATIONS ARE SUBJECT TO CHANGE WITHOUT NOTICE**