

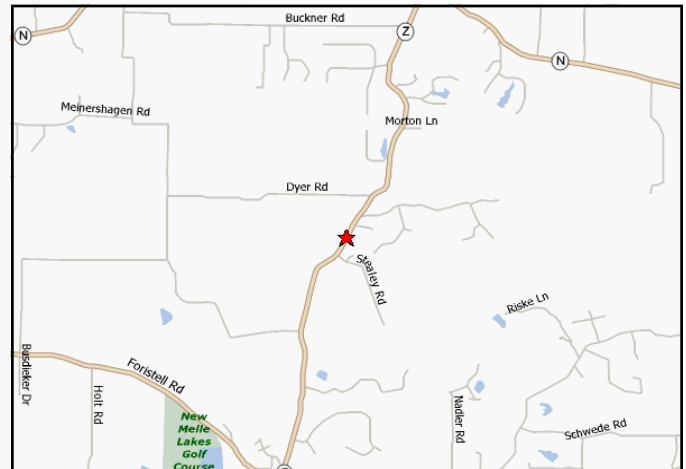
FOR SALE

***Sprock Farm
54+/- Acres +/-3449 Highway Z
New Melle, Mo. 63385***



SALE PRICE: \$1,581,370

***54+/- Acres
Farm Land In Prime Area
House to be Sold As Is
Great Horse Property
Wentzville School District***



DIRECTIONS: From Hwy 70 to Church Street exit. Go left on Hwy Z to property on left.

Tom Shaw Jr

Contact: (314) 283-5064

tshawjr@shawrealtors.com



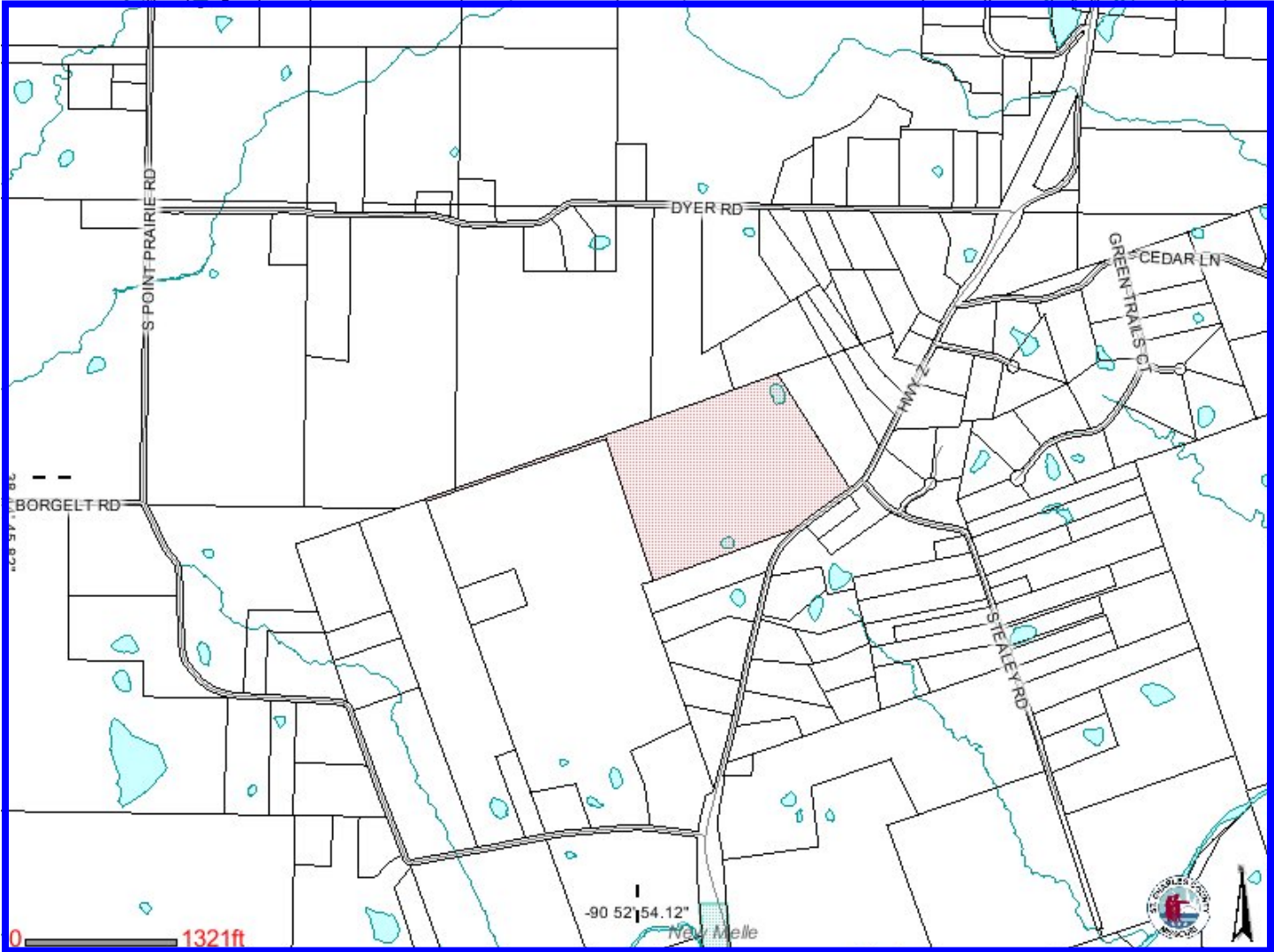
200 Long Road ♦ Suite 160 ♦ Chesterfield, Missouri 63005

Office: (636) 532-1922 ♦ Fax: (636) 532-0222 ♦ info@shawrealtors.com ♦ www.shawrealtors.com



Area Information / Property Description

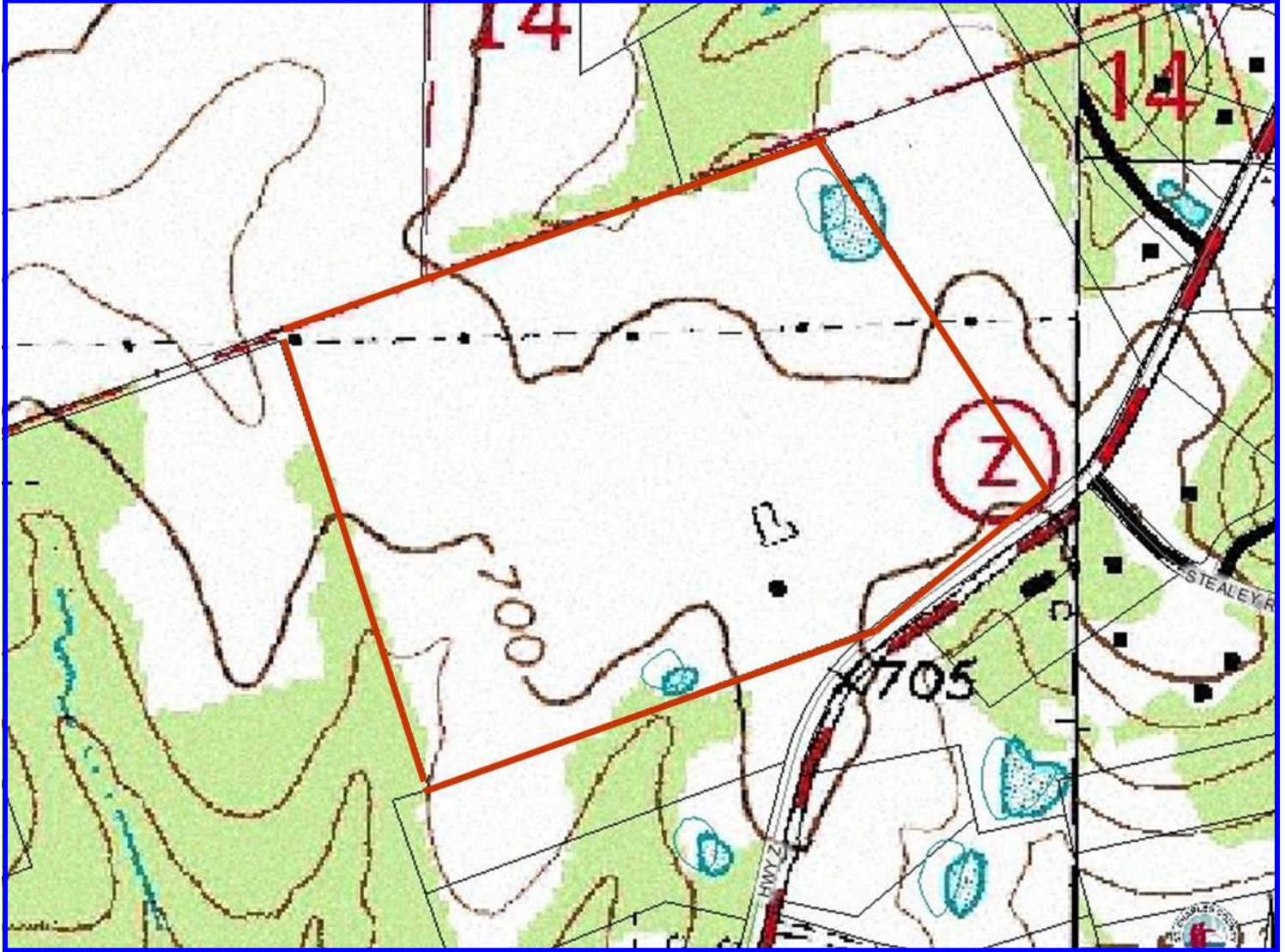
County	St. Charles
Subdivision	None
School District	Wentzville
High School	Wentzville
Middle School	Wentzville
Elementary School	Wentzville
Lot Size	52.41± Acres
Lot Description	Level, Good For Horses
Street Access	County / Paved
Taxes	\$1,374.00
Associations Fees & Restrictions	None
Utilities	Water: Public / Sewer: Septic Electric: Yes / Gas: None Phone: Yes / Cable: None



The information contained herein has been supplied to us by the owner of this property or by a third party. Tom Shaw Realtors does not guarantee its accuracy and recommends buyers or tenant to verify all information herein and to obtain a full boundary survey before buying said home or property. **PRICES AND SPECIFICATIONS ARE SUBJECT TO CHANGE WITHOUT NOTICE**



The information contained herein has been supplied to us by the owner of this property or by a third party. Tom Shaw Realtors does not guarantee its accuracy and recommends buyers or tenant to verify all information herein and to obtain a full boundary survey before buying said home or property. **PRICES AND SPECIFICATIONS ARE SUBJECT TO CHANGE WITHOUT NOTICE**



The information contained herein has been supplied to us by the owner of this property or by a third party. Tom Shaw Realtors does not guarantee its accuracy and recommends buyers or tenant to verify all information herein and to obtain a full boundary survey before buying said home or property. **PRICES AND SPECIFICATIONS ARE SUBJECT TO CHANGE WITHOUT NOTICE**