

*23± Acres Freymuth  
St. Paul, Mo 63366*

***SALE PRICE: \$287,500***



*Tom Shaw Jr.  
(314) 283-5064  
tomshawjr@yahoo.com*

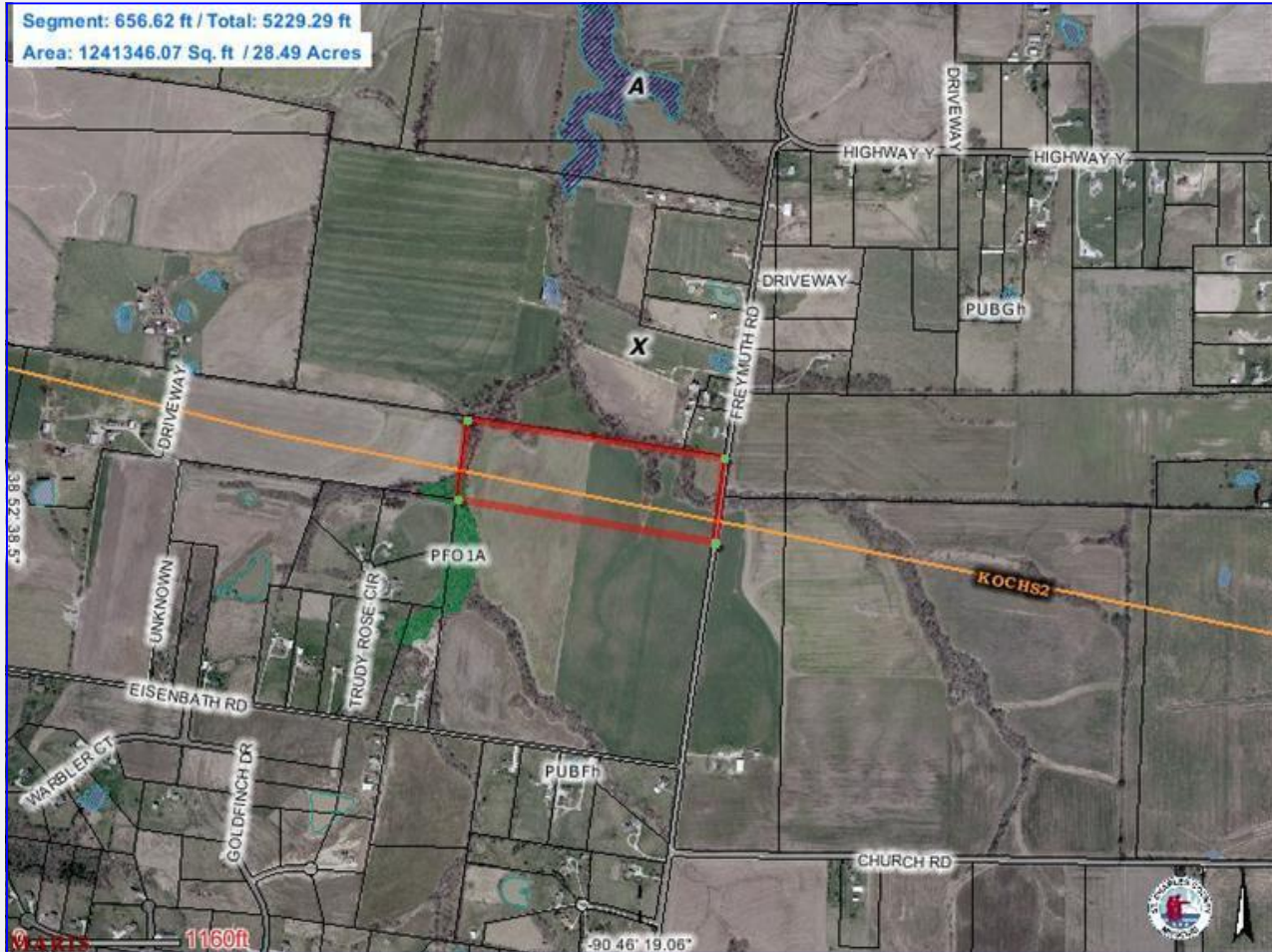
**Great stand alone Property. Good for  
horses cattle small farm no restrictions**

**DIRECTIONS:** Hwy P West from O Fallon to Freymuth rd to sign



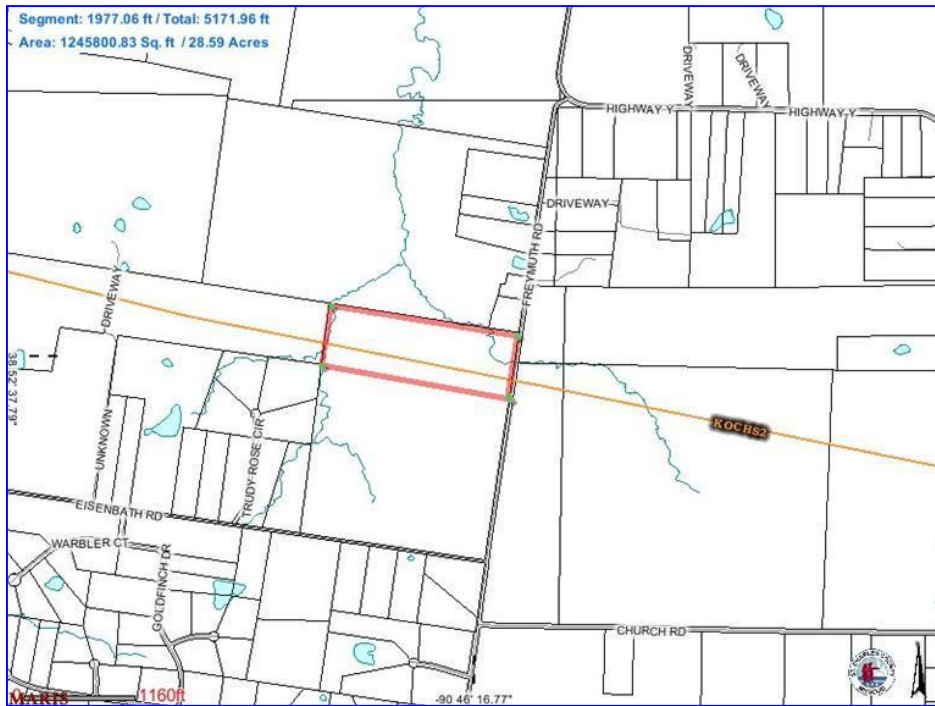
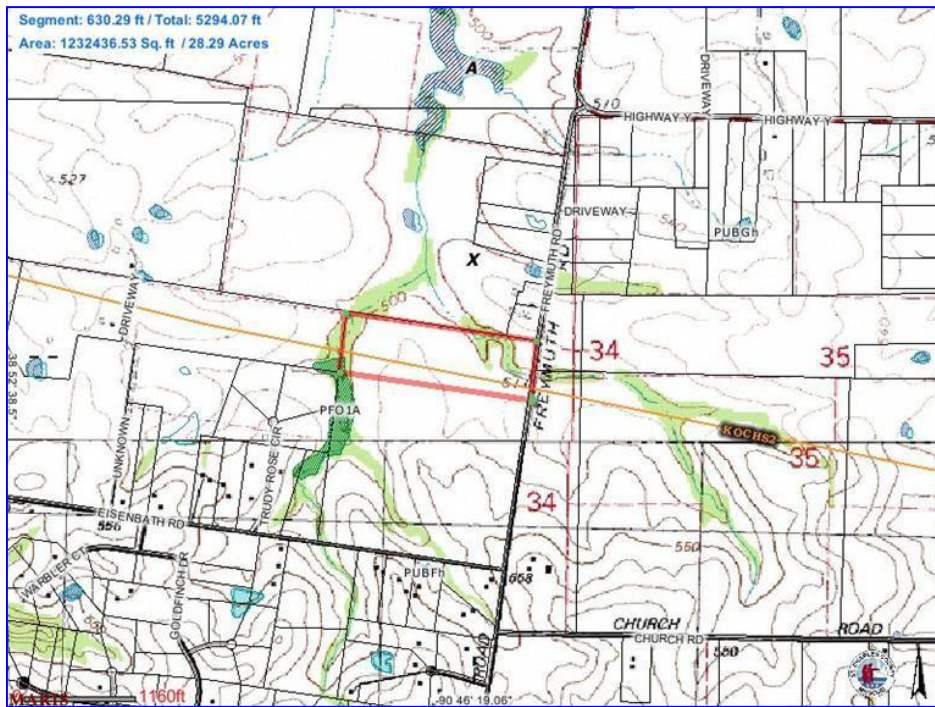
200 Long Road ♦ Suite 160 ♦ Chesterfield, Missouri 63005

Office: (636) 532-1922 ♦ Fax: (636) 532-0222 ♦ info@shawrealtors.com ♦ www.shawrealtors.com



### Area Information / Property Description

County	St. Charles
Subdivision	None
School District	Wentzville
High School	Ft. Zumwalt
Middle School	Ft. Zumwalt
Elementary School	Mt.Hope
Lot Size	23± Acres
Lot Description	Level Lot
Street Access	Asphalt
Taxes	To Be Assessed
Associations Fees & Restrictions	None
Utilities	Water: None Electric: Yes Phone: Yes Sewer: None



The information contained herein has been supplied to us by the owner of this property or by a third party. Tom Shaw Realtors does not guarantee its accuracy and recommends buyers or tenant to verify all information herein and to obtain a full boundary survey before buying said home or property. **PRICES AND SPECIFICATIONS ARE SUBJECT TO CHANGE WITHOUT NOTICE**