

# *20± Acres Foristell St. Charles, Mo 63348*

***SALE PRICE: \$287,500***



*Tom Shaw Jr.  
(314) 283-5064  
tomshawjr@yahoo.com*

**ON OF A KIND NOT IN A DEVELOPMENT  
NO RESTRICTIONS MUST SEE PRICE TO  
SELL**

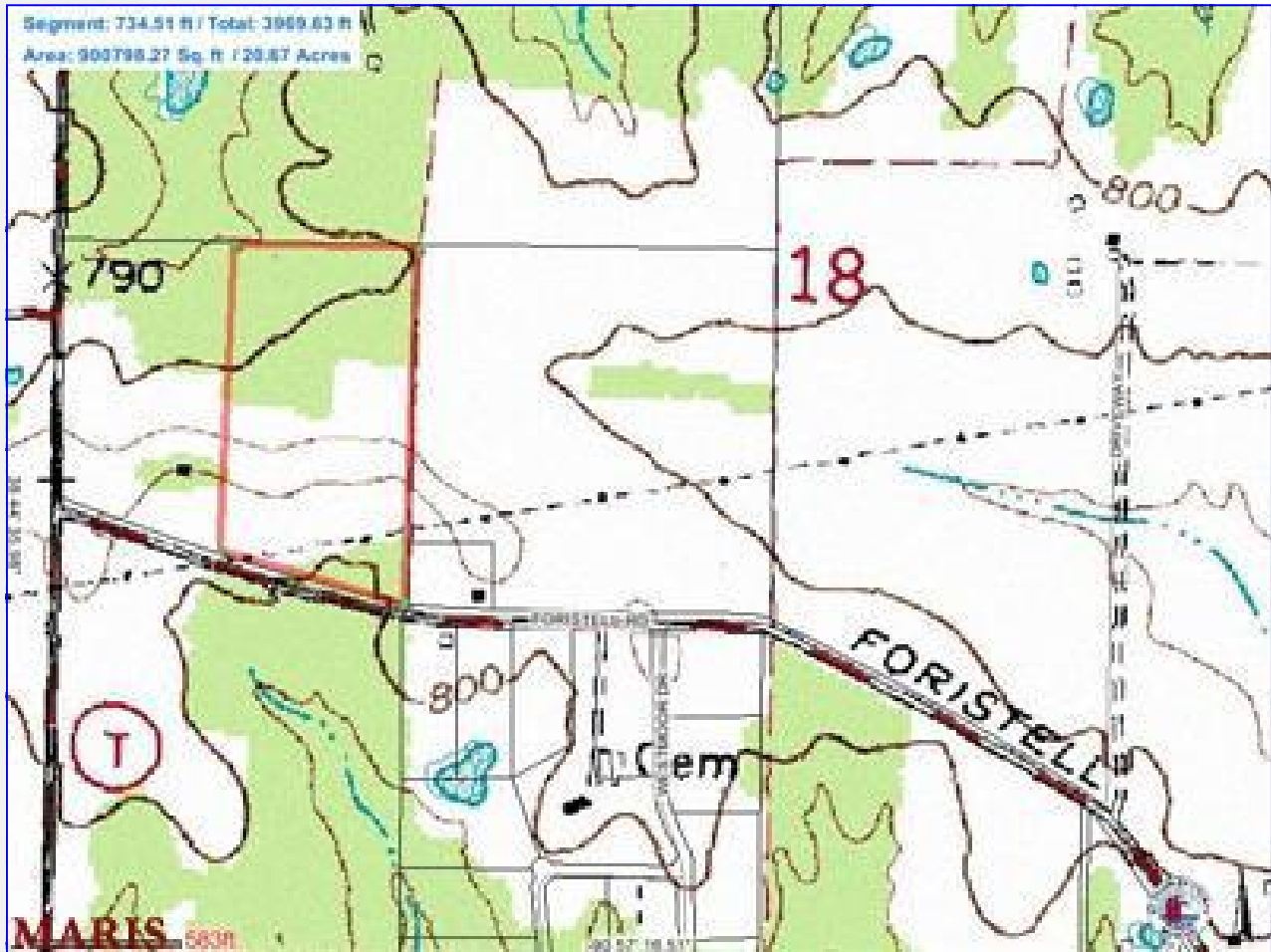
**DIRECTIONS:**

Hwy 70 TO HWT T SOUTH 3MI TO FORISTELL RD ON CORNER  
CALL AGENT NEED FOR BETTER



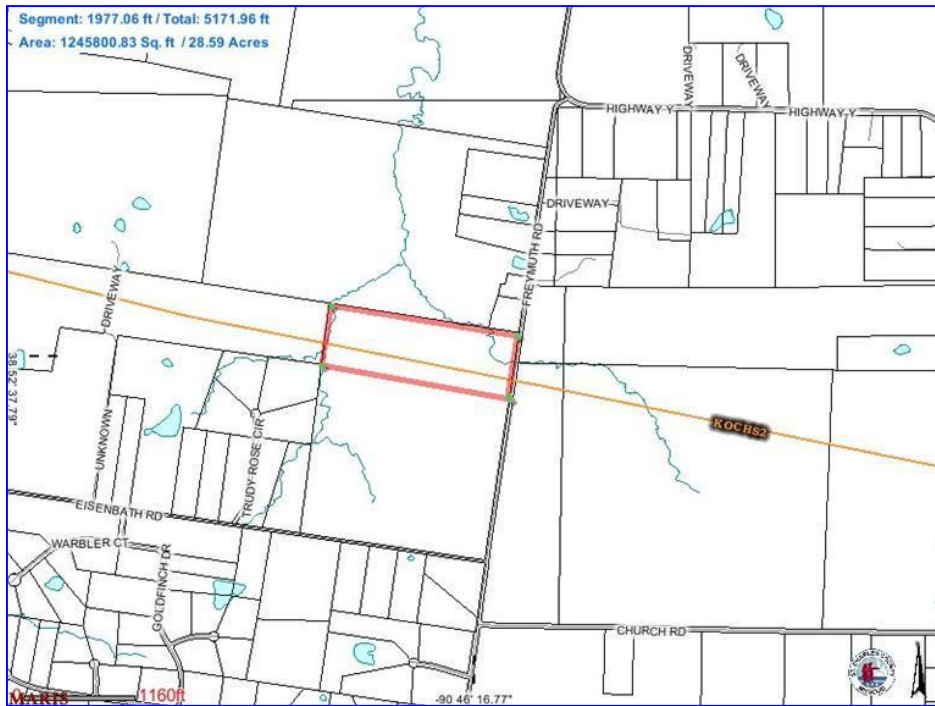
200 Long Road ♦ Suite 160 ♦ Chesterfield, Missouri 63005

Office: (636) 532-1922 ♦ Fax: (636) 532-0222 ♦ info@shawrealtors.com ♦ www.shawrealtors.com



### Area Information / Property Description

County	St. Charles
Subdivision	None
School District	Francis Howell
High School	Francis Howell
Middle School	Francis Howell
Elementary School	Daniel Boon
Lot Size	23± Acres
Lot Description	Level Lot
Street Access	Asphalt
Taxes	To Be Assessed
Associations Fees & Restrictions	None
Utilities	Water: None Electric: Yes Phone: Yes Sewer: None



The information contained herein has been supplied to us by the owner of this property or by a third party. Tom Shaw Realtors does not guarantee its accuracy and recommends buyers or tenant to verify all information herein and to obtain a full boundary survey before buying said home or property. **PRICES AND SPECIFICATIONS ARE SUBJECT TO CHANGE WITHOUT NOTICE**