

513 N. Eatherton Rd Wildwood, Mo 63005

SALE PRICE: \$299,900



Chip DeWitt

(314) 503-3619

chip@shawrealtors.com.

This is one of kind listing in Wildwood that has preliminary zoning for light industrial. Ideal for landscapers, contractors, outside storage. It also has about 1,000 square foot home that can be easily converted in to office space. This property is levy protected, 500 year flood plain. About 1+/- Acres is usable. Water available but not hook up to property. Also has Missouri river frontage for fishing & hunting.

DIRECTIONS:

Chesterfield Airport west of Long Rd to left on Olive Street which turns into N Eatherton Rd. To property on right next to Howell Island entrance.



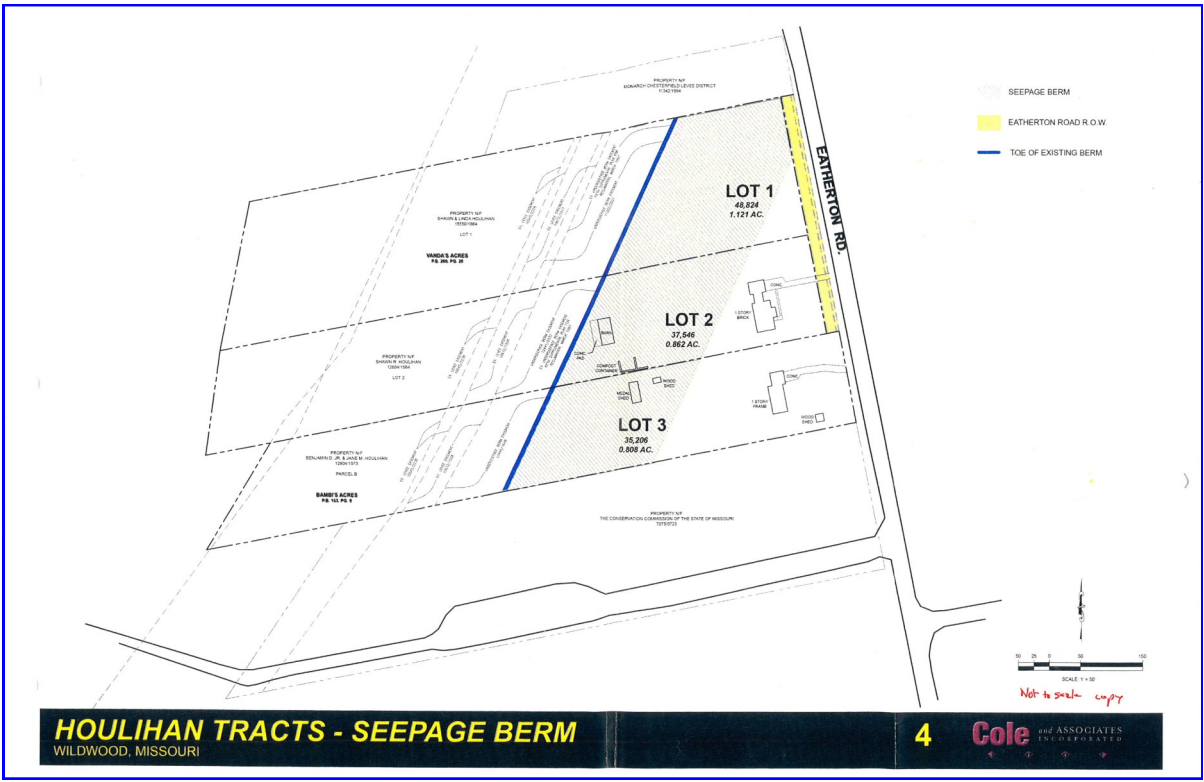
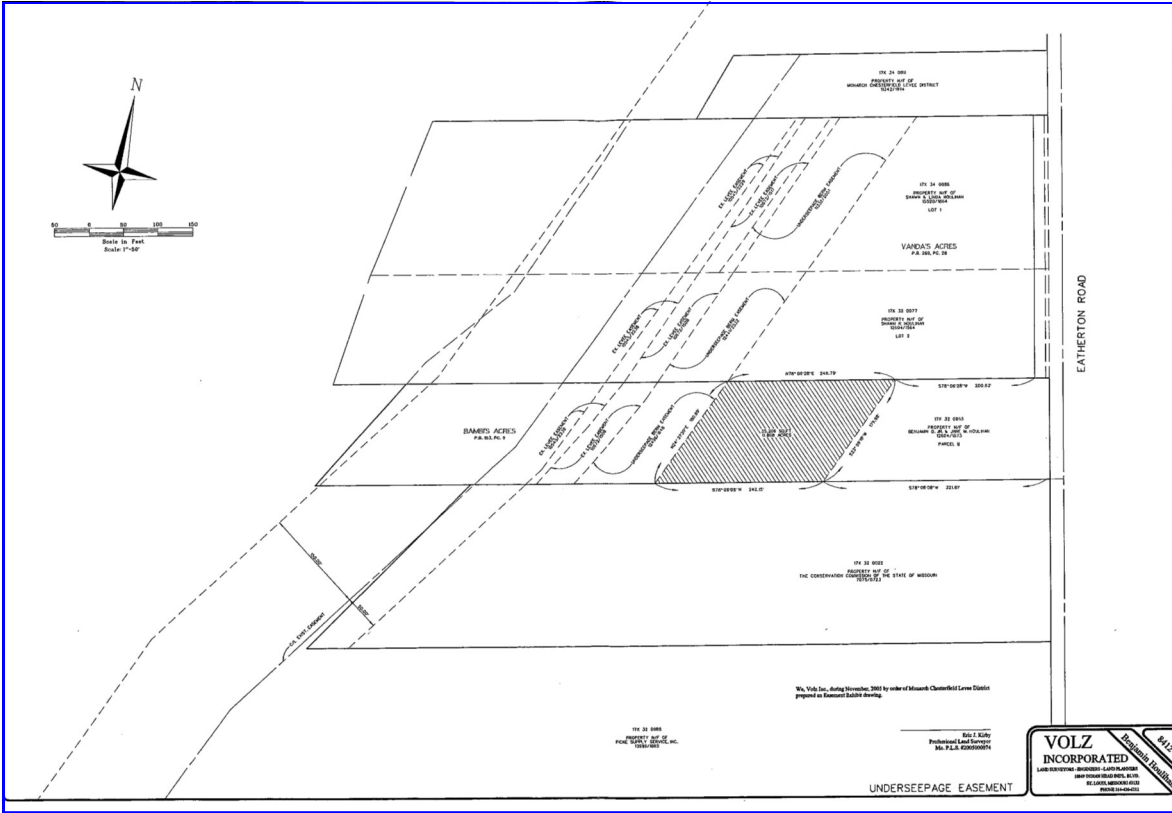
17813 Edison Ave. ♦ Suite 200 ♦ Chesterfield, Missouri 63005

Office: (636) 532-1922 ♦ Fax: (636) 532-0222 ♦ info@shawrealtors.com ♦ www.shawrealtors.com



Area Information / Property Description

County	St. Louis
Subdivision	None
Zoning	Light Industrial
Possible Uses	Landscaping,, Nursery, Contractor, Outdoor Storage
Building Size	1,032 Square Feet
Parking	Paved Asphalt
Lot Size	3.33± Acres
Lot Description	Level Lot
Street Access	Paved
Taxes	\$ 1,957.00 2010
Associations Fees & Restrictions	None
Utilities	Water: Well, County Water is Across Street Electric: Yes, Phone: Yes Sewer: Public



The information contained herein has been supplied to us by the owner of this property or by a third party. Tom Shaw Realtors does not guarantee its accuracy and recommends buyers or tenant to verify all information herein and to obtain a full boundary survey before buying said home or property. **PRICES AND SPECIFICATIONS ARE SUBJECT TO CHANGE WITHOUT NOTICE**