

# 9977 Duke Dr. Unincorporated St. Louis, Mo. 63136

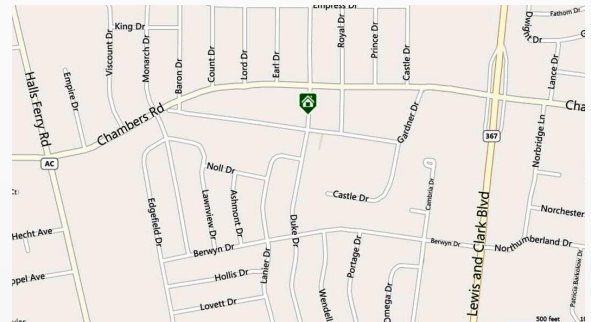
**SALE PRICE: \$90,000**

## Contact

**Cathy Shaw-Connely**

**(636) 346-4960**

**squawky1@aol.com**



Wow what a wonderful opportunity! Two lots containing approx 1 acre, also includes tax I.D. number 11F141686 9977 Duke Lane as well as 2347 Gardner Dr. Two homes on property also fronting on Chambers Road. Homes are being sold in as is where is condition and buyers are responsible for all inspections and any repairs.....This property offers privacy and once again different opportunities.....This is a must see....

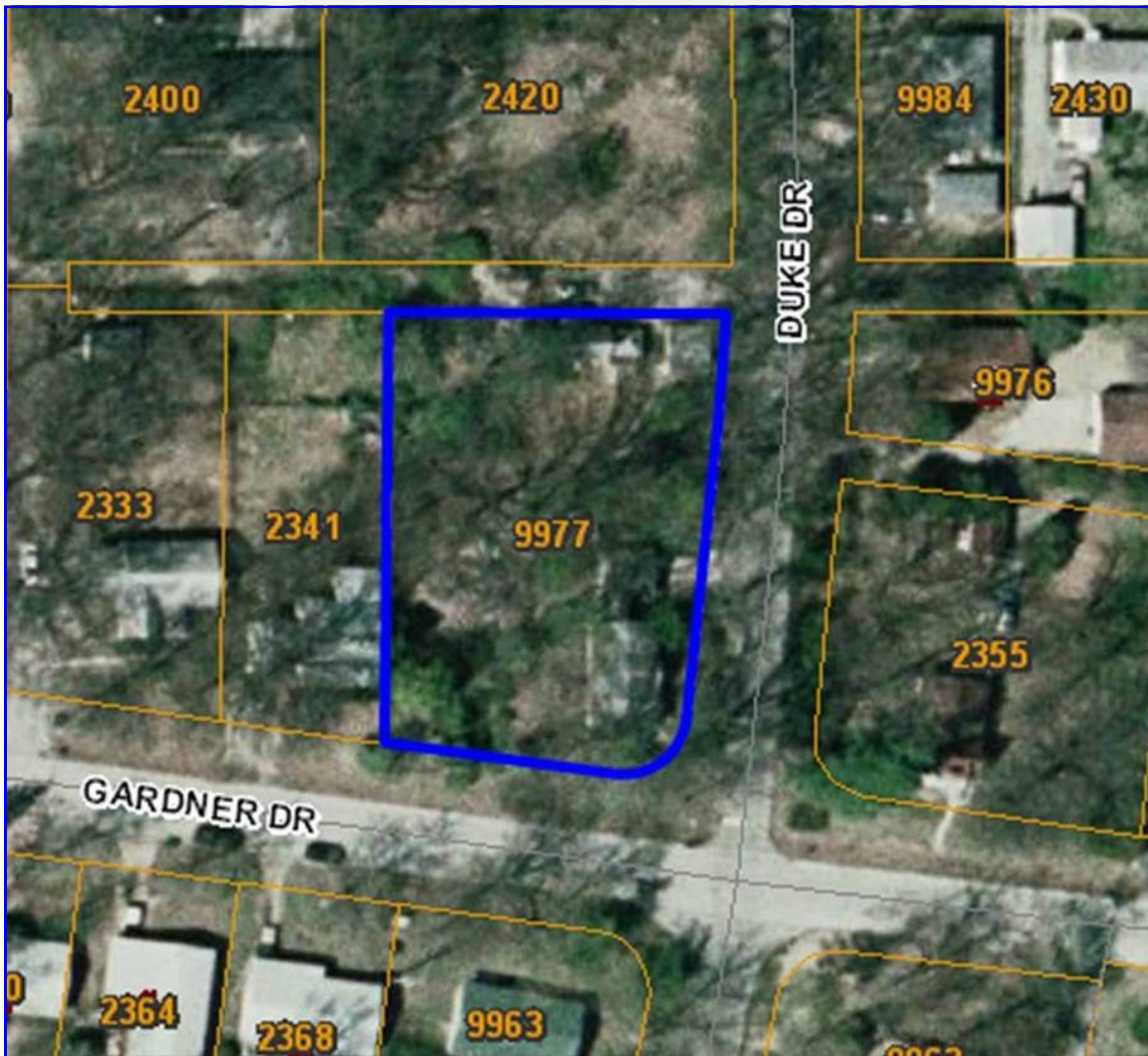
<i>STYLE</i>	<i>ROOMS</i>	<i>BEDROOMS</i>	<i>BATHS</i>	<i>GARAGE</i>	<i>LOT SIZE</i>	<i>SCHOOL DISTRICT</i>
<b>RANCH</b>	<b>5</b>	<b>2</b>	<b>1 Full</b>	<b>2</b>	<b>1.0± Acres</b>	<b>RIVERVIEW</b>

**DIRECTIONS:** Hwy 367 to Chambers Rd. west past City Hall to left on Gardner.



17813 Edison Ave ♦ Suite 200 ♦ Chesterfield, Missouri 63005

Office: (636) 532-1922 ♦ Fax: (636) 532-0222 ♦ info@shawrealtors.com ♦ www.shawrealtors.com



<i>FAMILY ROOM</i>	<i>GREAT ROOM</i>	<i>HEARTH ROOM</i>	<i>DINING ROOM</i>	<i>DEN</i>	<i>KITCHEN</i>	<i>BREAKFAST ROOM</i>
<i>15' X 12'</i>	<i>N/A</i>	<i>N/A</i>	<i>13' X 12'</i>	<i>N/A</i>	<i>12' X 12'</i>	<i>N/A</i>

<i>MASTER BEDROOM</i>	<i>GUEST BEDROOM</i>	<i>GUEST BEDROOM</i>	<i>GUEST BEDROOM</i>	<i>GUEST BEDROOM</i>	<i>RECREATION ROOM</i>	<i>LAUNDRY ROOM</i>
<i>13' X 12'</i>	<i>11' X 11'</i>	<i>N/A</i>	<i>N/A</i>	<i>N/A</i>	<i>N/A</i>	<i>N/A</i>

<i>CONSTRUCTION</i>	<i>AGE</i>	<i>HEATING</i>	<i>COOLING</i>	<i>FIREPLACES</i>	<i>LOT DESCRIPTION</i>	<i>AMENITIES</i>	<i>TAXES</i>	<i>ASSOCIATIONS FEES</i>
<i>BRICK PRED</i>	<i>77</i>	<i>ELECTRIC: FORCED AIR</i>	<i>ELECTRIC: CENTRAL,</i>	<i>1 WOOD BURNING</i>	<i>LEVEL</i>	<i>WORK SHOP</i>	<i>\$1,461 2010</i>	<i>NONE</i>

<i>COUNTY</i>	<i>UTILITIES</i>	<i>SCHOOLS</i>
<i>ST. LOUIS</i>	<i>ELECTRIC, PHONE, PROPANE PUBLIC WATER &amp; SEWER</i>	<i>HIGH SCHOOL: RIVER VIEW MIDDLE SCHOOL: WESTVIEW ELEMENTARY: MEADOWS</i>