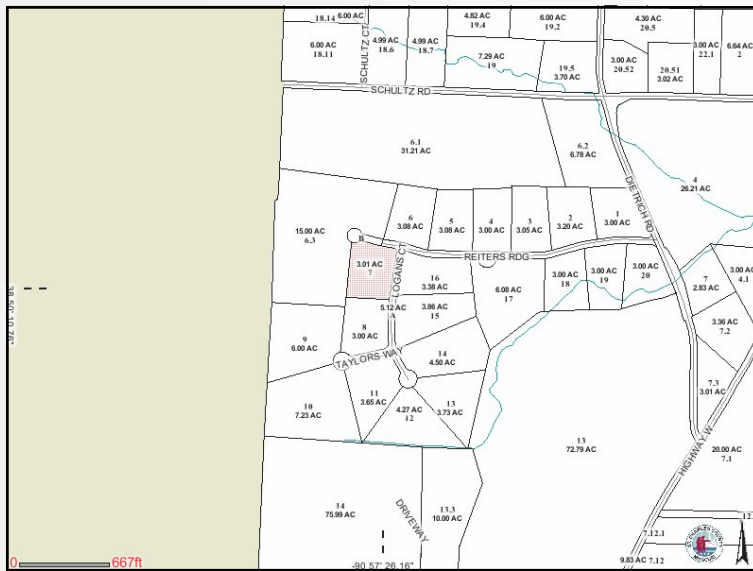


# #7 Dietrich Crossing Foristell, Mo 63348

**PRICE REDUCED!**  
**SALE PRICE: \$68,900**



*Contact*

*Cathy Shaw-Connely*  
*(636) 346-4960*  
*squawky1@aol.com*

*Tom Shaw Jr.*  
*(314) 283-5064*  
*tomshawjr@yahoo.com*

**NEW END OF SUMMER PRICES!** Attractive Owner Financing available! Buy now & build now or build later and use your own builder! Beautiful Custom Home development. Lot #7. Wooded lot at end of street offers privacy and backs to acres and acres of land. Awesome homes and a wonderful surrounding. Utilities on site. (Go to end of Reiter's Ridge and lot is on the left...South West corner of Reiter's Ridge & Logan's Ct)

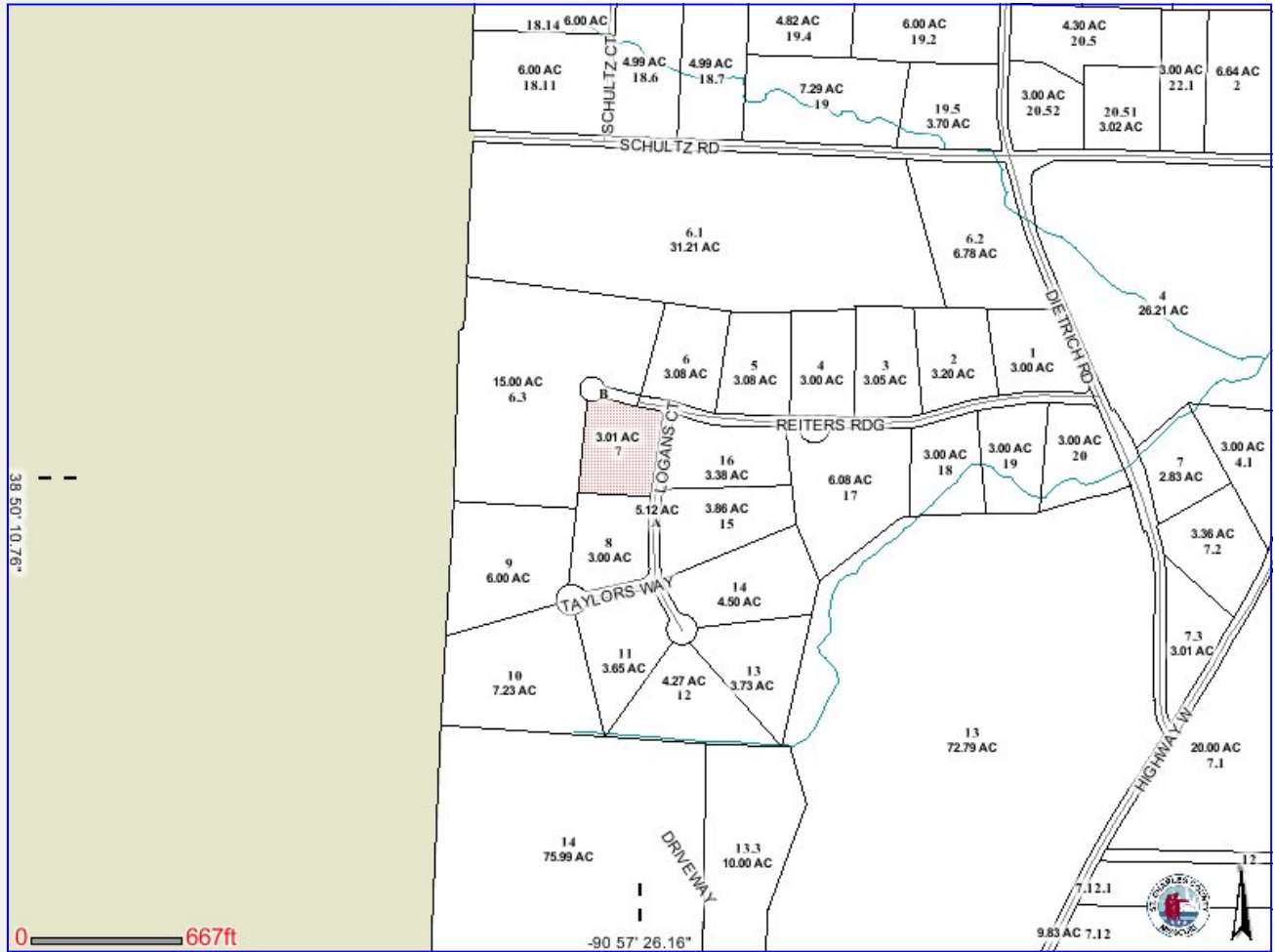
## **DIRECTIONS:**

*I-70 West to Foristell. Exit right/North on Hwy W. Left on Dietrich Road, and Left into beautiful Dietrich Crossing. Lot at end of street on left. (Corner Lot...SouthWest Corner of Reiter's Ridge & Logan's Ct intersection)*



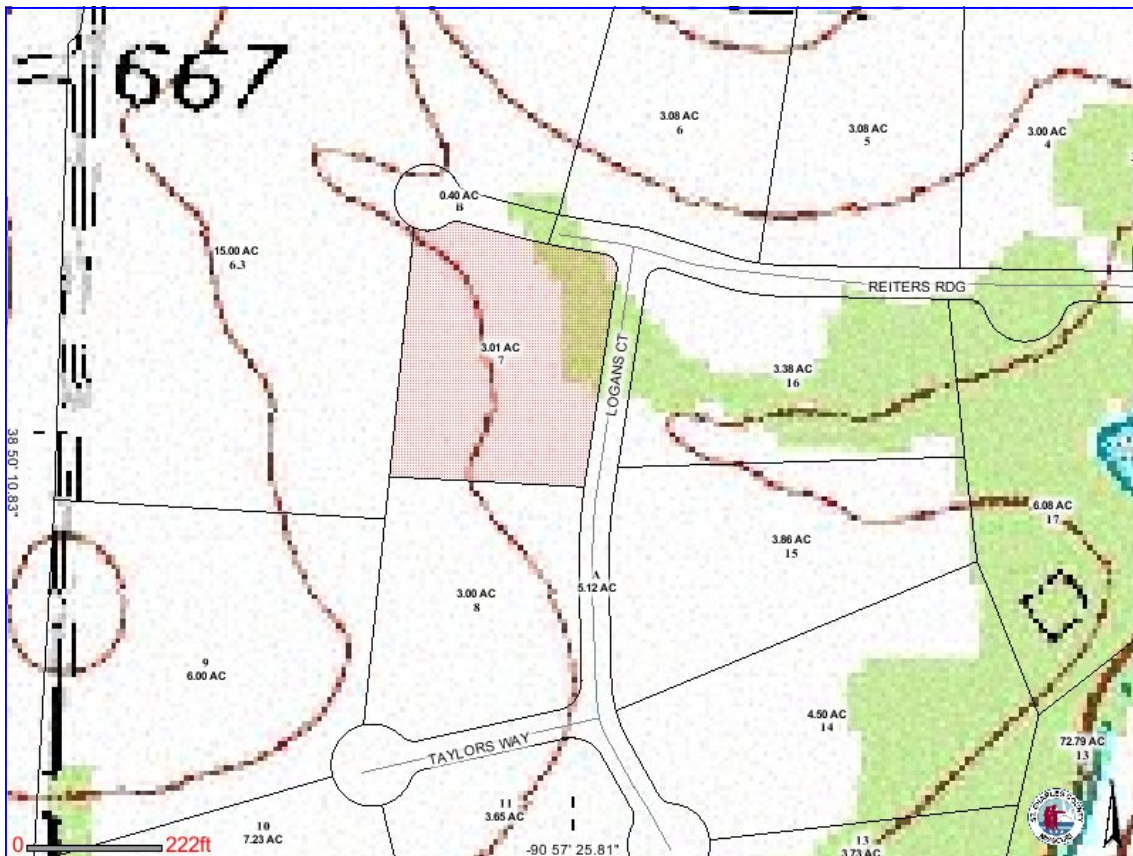
17813 Edison Ave. Suite 200 ♦ Chesterfield, Missouri 63005

Office: (636) 532-1922 ♦ Fax: (636) 532-0222 ♦ info@shawrealtors.com ♦ www.shawrealtors.com



### Area Information / Property Description

County	St. Charles
Subdivision	Dietrich Crossing
School District	Wentzville
High School	Holt
Middle School	Wentzville Middle
Elementary School	Heritage
Lot Size	3.00± Acres
Lot Description	Level Lot Cul-de-sac, Gently Rolling
Street Access	Concrete
Taxes	\$ 858.06 2010
Associations Fees & Restrictions	None
Utilities	Water: Public Electric: Yes Phone: Yes Sewer: Public



The information contained herein has been supplied to us by the owner of this property or by a third party. Tom Shaw Realtors does not guarantee its accuracy and recommends buyers or tenant to verify all information herein and to obtain a full boundary survey before buying said home or property. **PRICES AND SPECIFICATIONS ARE SUBJECT TO CHANGE WITHOUT NOTICE**