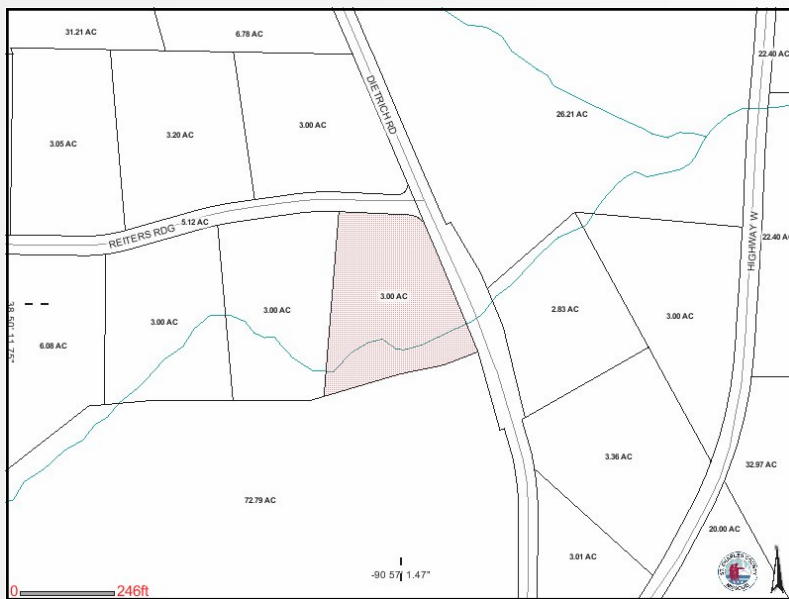


#20 Dietrich Crossing Foristell, Mo 63348

PRICE REDUCED!
SALE PRICE: \$64,900



Contact

Cathy Shaw-Connely
(636) 346-4960
squawky1@aol.com

Tom Shaw Jr.
(314) 283-5064
tomshawjr@yahoo.com

NEW END OF SUMMER PRICES! Attractive Owner Financing available! Buy now & build now or build later and use your own builder! Open, cleared build site up front...wooded privacy at the rear...what more could you want? Awesome Custom Home development. Privacy and Surrounded by unique Custom Luxury! Utilities on site. (1st lot on the left upon entering the subdivision.)

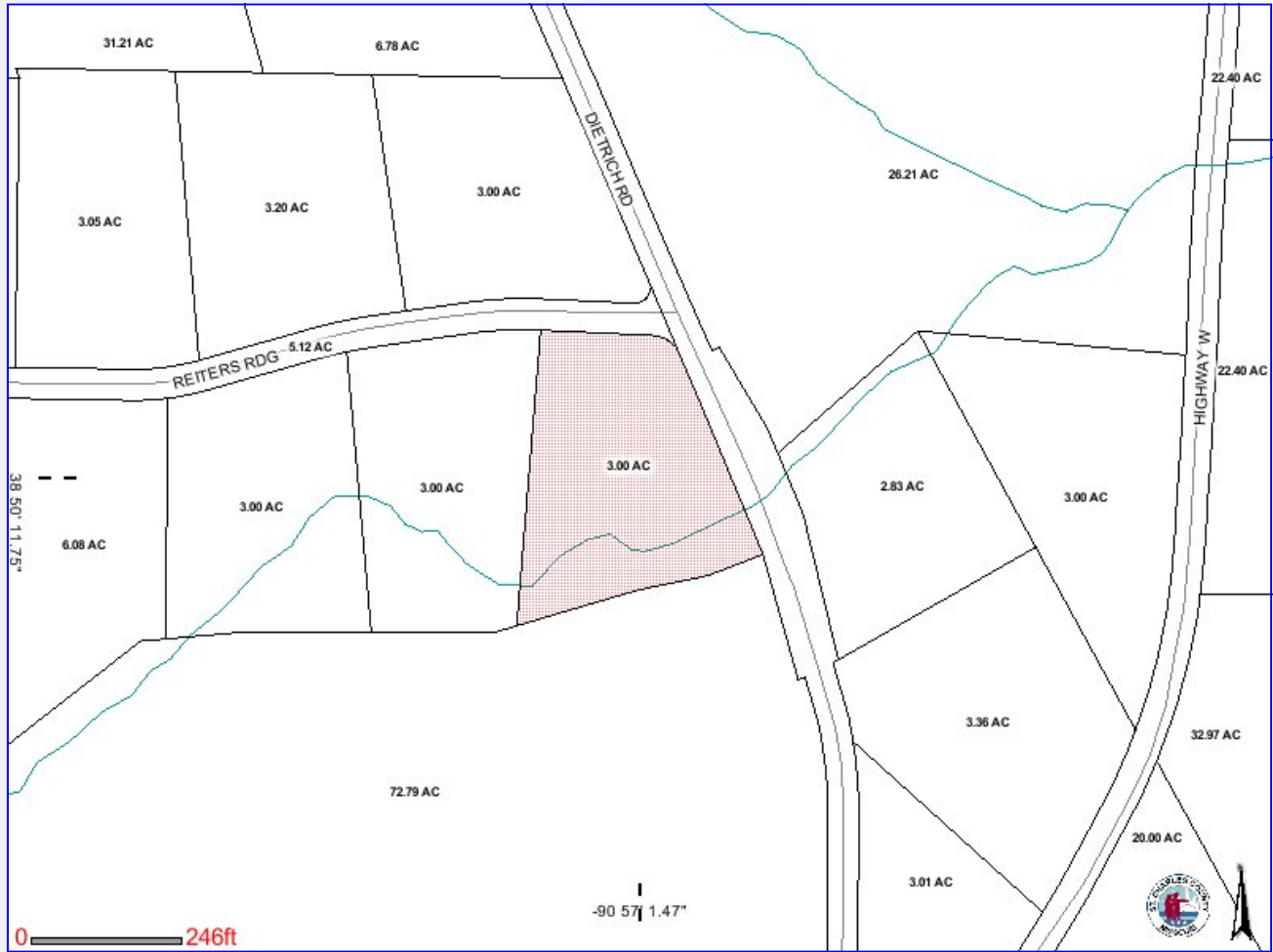
DIRECTIONS:

II-70 West to Foristell. Exit right/North on Hwy W. Left on Dietrich Road, and Left into beautiful Dietrich Crossing (Reiters Ridge), then Left on Logans Ct. 1st Lot on left.
)



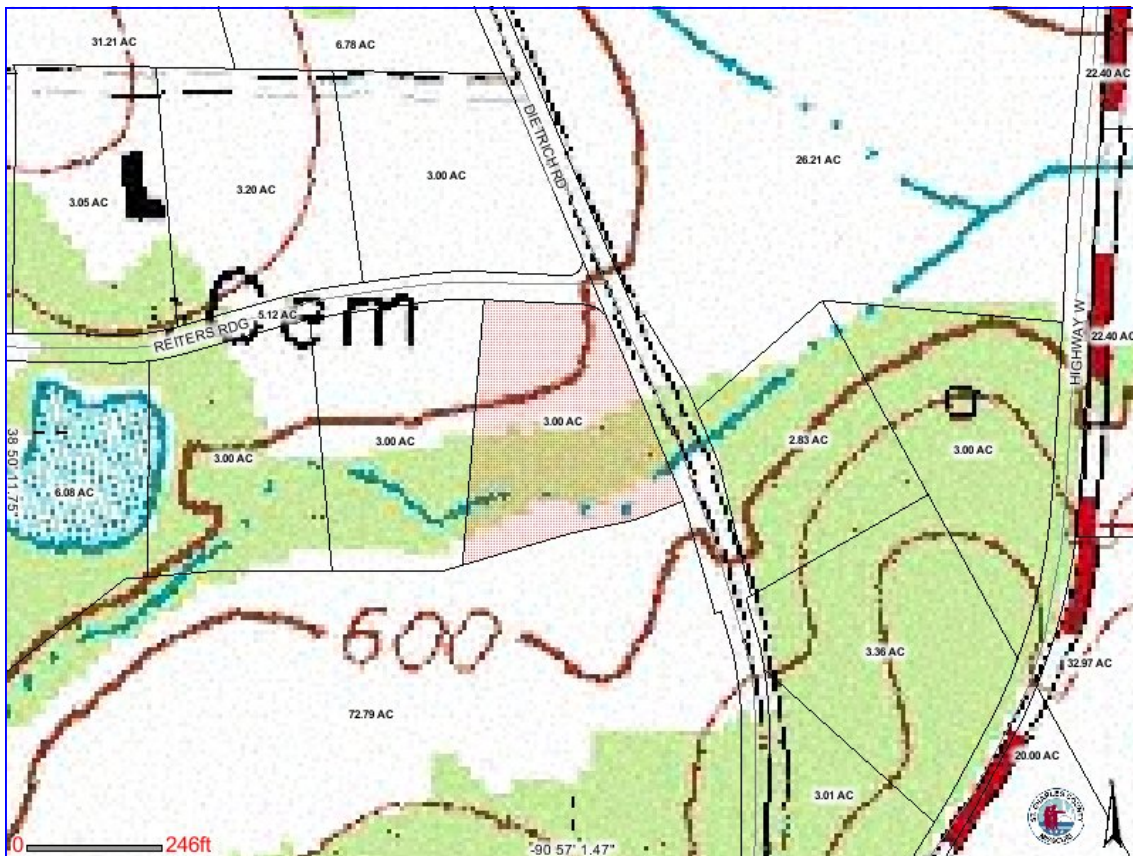
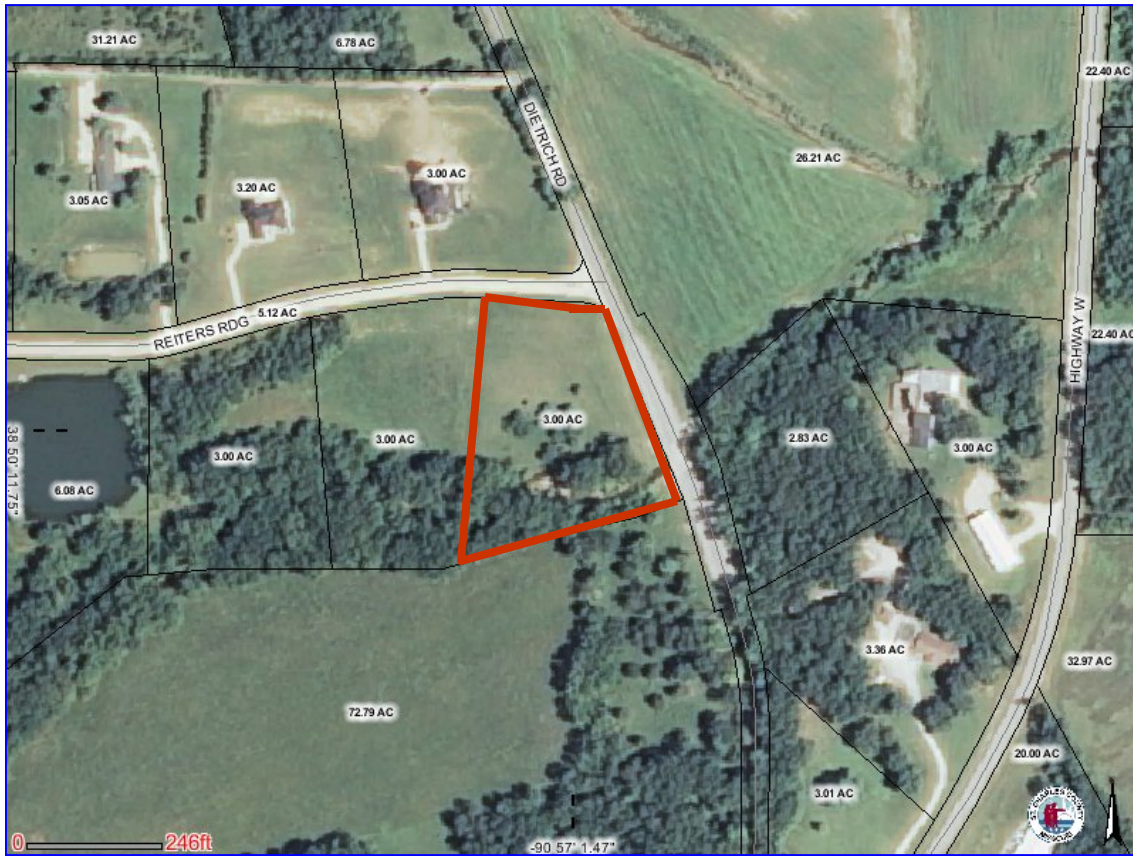
17813 Edison Ave. Suite 200 ♦ Chesterfield, Missouri 63005

Office: (636) 532-1922 ♦ Fax: (636) 532-0222 ♦ info@shawrealtors.com ♦ www.shawrealtors.com



Area Information / Property Description

County	St. Charles
Subdivision	Dietrich Crossing
School District	Wentzville
High School	Holt
Middle School	Wentzville Middle
Elementary School	Heritage
Lot Size	3.00± Acres
Lot Description	Level Lot, Cleared
Street Access	Concrete
Taxes	\$ 858.06 2010
Associations Fees & Restrictions	None
Utilities	Water: Public Electric: Yes Phone: Yes Sewer: Public



The information contained herein has been supplied to us by the owner of this property or by a third party. Tom Shaw Realtors does not guarantee its accuracy and recommends buyers or tenants to verify all information herein and to obtain a full boundary survey before buying said home or property. **PRICES AND SPECIFICATIONS ARE SUBJECT TO CHANGE WITHOUT NOTICE**