

FOR SALE

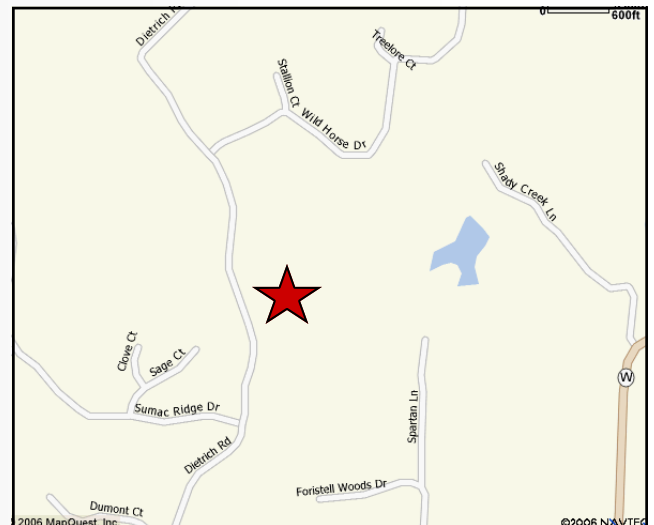
*Dietrich Rd.
Foristell, Mo. 63348*



SALE PRICE: \$362,160

*20.12± Acres
Very Secluded
Possible 2 Building Sites
Wentzville School District*

DIRECTIONS: From Hwy 70 to north on Hwy W to west on Dietrich about 1.2 miles to sign.



Tom Shaw Jr.

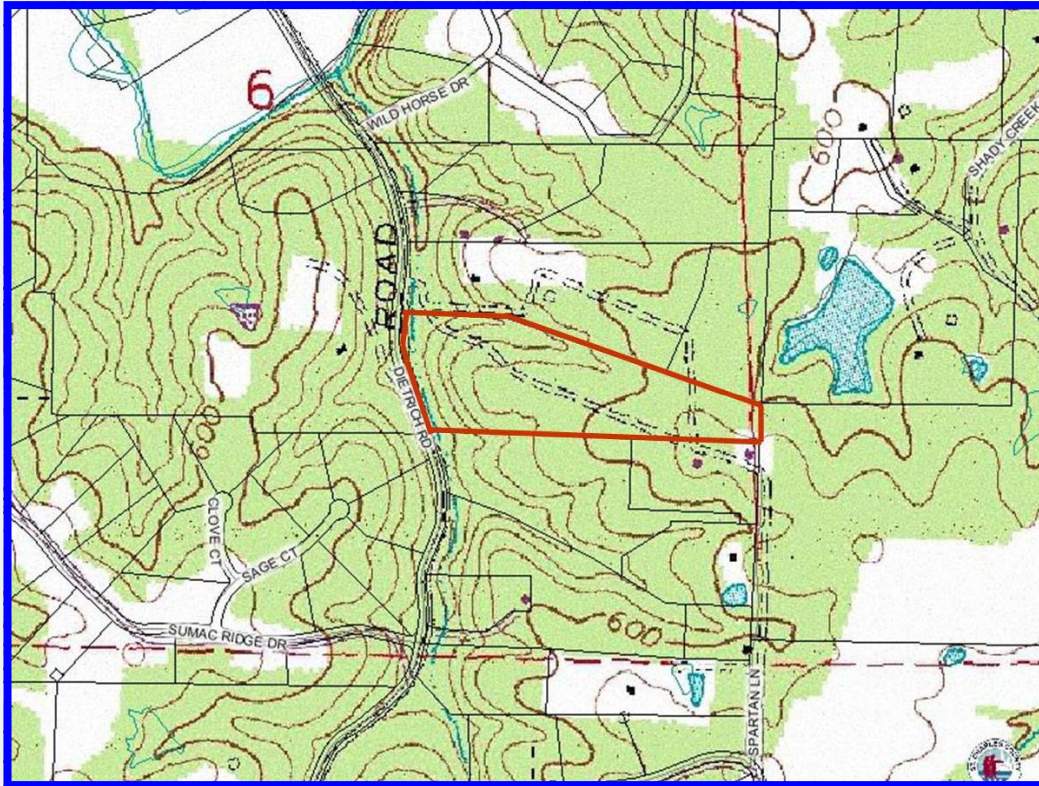
Contact: (314) 283-5064

tshawjr@shawrealtors.com



200 Long Road ♦ Suite 160 ♦ Chesterfield, Missouri 63005

Office: (636) 532-1922 ♦ Fax: (636) 532-0222 ♦ info@shawrealtors.com ♦ www.shawrealtors.com



Area Information / Property Description

County	St. Charles		
Subdivision	None		
School District	Wentzville		
High School	Holt		
Middle School	Wentzville		
Elementary School	Heritage		
Lot Size	20.12± Acres		
Lot Description	Wooded		
Street Access	County / Paved		
Taxes	\$832.00		
Associations Fees & Restrictions	None		
Utilities	Water: None	/	Sewer: None
	Electric: Yes	/	Gas: None
	Phone: Yes	/	Cable: None

