

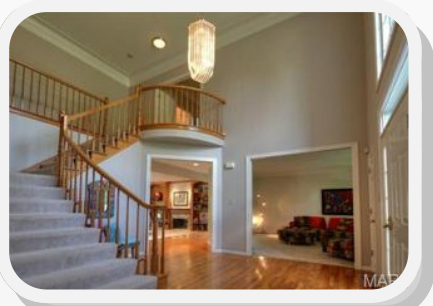
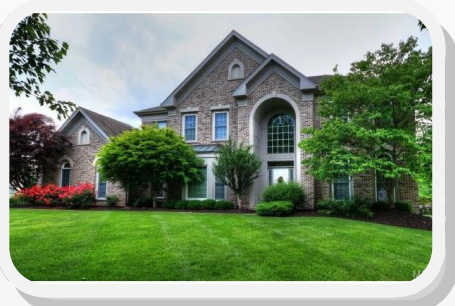
# 1327 Countryside Manor Place. Chesterfield, Mo. 63005

**SALE PRICE: \$700,000**

## Contact

**Cathy Shaw-Connely**  
**(636) 346-4960**  
**squawky1@aol.com**

**Barb Lawless**  
**(314) 662-2554**  
**babs@shawrealtors.com**



You'll want to live in this terrific two story custom home in the sought after Countryside subdivision! Airy, bright, open floor plan. Large level lot. Dramatic two story, open foyer with split staircase. Living room opens to a gallery with charming window seat, easing the transition into the 23x17 Great Room with wood burning fireplace flanked by custom built bookshelves, beautiful crown molding and walk behind wet bar. Dining room has lovely bay window, chair rail and crown molding. Updated kitchen with granite counter tops, custom 42 inch cabinets, bamboo wood flooring, center island with cook top, 2 pantries and large breakfast area. Spacious main floor laundry rm. Master suite has crown molding DREAM LARGE walk-in closet and beautiful open bath with built-in whirlpool tub, separate glass shower and double bowl vanity. Three additional bedrooms each bedroom has large closets. Wait until you see the large level back yard with patio waiting for family barbecues....

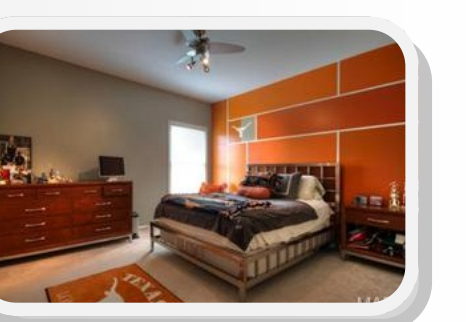
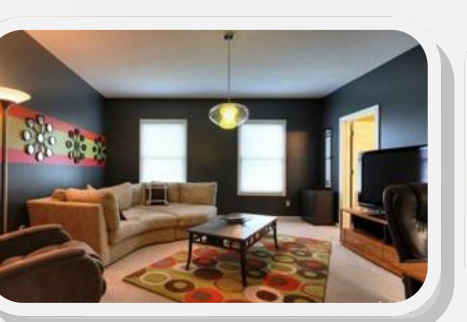
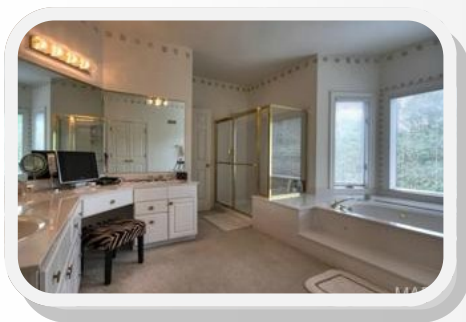
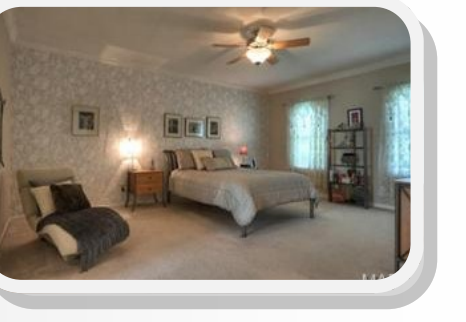
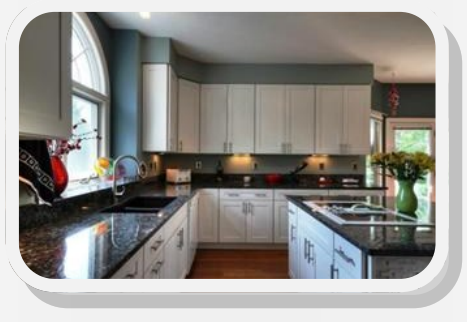
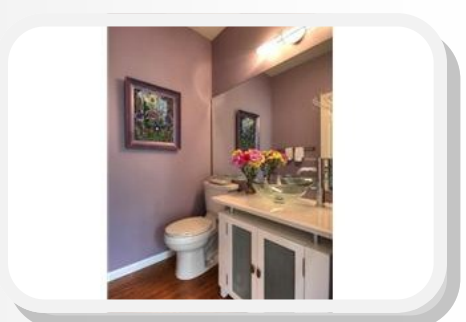
<i>STYLE</i>	<i>ROOMS</i>	<i>BEDROOMS</i>	<i>BATHS</i>	<i>GARAGE</i>	<i>LOT SIZE</i>	<i>SCHOOL DISTRICT</i>
<b>2 Story</b>	<b>9</b>	<b>4</b>	<b>3 Full 1 Half</b>	<b>3</b>	<b>.56</b>	<b>ROCKWOOD</b>

**DIRECTIONS:** Wild Horse Creek Rd. to Kehrs Mill Rd. Countyside Subdivision (on right side) to right on Countyside Manor Parkway to right on Countryside Manor Place. to house on left.



17831 Edison Ave ♦ Suite 200 ♦ Chesterfield, Missouri 63005

Office: (636) 532-1922 ♦ Fax: (636) 532-0222 ♦ info@shawrealtors.com ♦ www.shawrealtors.com

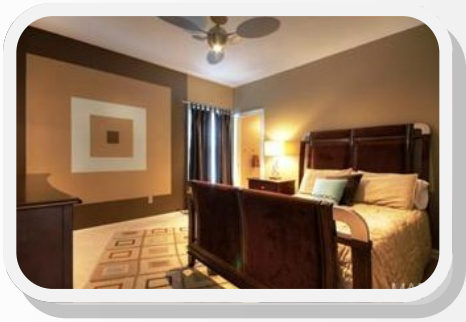


<i>GREAT ROOM</i>	<i>LIVING ROOM</i>	<i>FAMILY ROOM</i>	<i>DINING ROOM</i>	<i>DEN</i>	<i>KITCHEN</i>	<i>BREAKFAST ROOM</i>
<b>23' X 17'</b>	<b>14' X 14'</b>	<b>N/A</b>	<b>18' X 14'</b>	<b>N/A</b>	<b>13' X 8'</b>	<b>17' X 15'</b>

<i>MASTER BEDROOM</i>	<i>SITTING ROOM</i>	<i>GUEST BEDROOM</i>	<i>GUEST BEDROOM</i>	<i>GUEST BEDROOM</i>	<i>RECREATION ROOM</i>	<i>LAUNDRY ROOM</i>
<b>18' X 15'</b>	<b>N/A</b>	<b>16' X 15'</b>	<b>13' X 11'</b>	<b>12' X 11'</b>	<b>N/A</b>	<b>11' X 9'</b>

<i>CONSTRUCTION</i>	<i>AGE</i>	<i>HEATING</i>	<i>COOLING</i>	<i>FIREPLACES</i>	<i>LOT DESCRIPTION</i>	<i>AMENITIES</i>	<i>TAXES</i>	<i>ASSOCIATIONS FEES</i>
<b>BRICK VENEER</b>	<b>18</b>	<b>GAS: FORCED AIR HUMIDIFER</b>	<b>ELECTRIC: CENTRAL ZONED CEILING FAN</b>	<b>1 WOOD BURNING</b>	<b>LEVEL</b>	<b>GROUND UTILITIES</b>	<b>\$9,009.00 2010</b>	<b>\$450.00 YEARLY</b>

<i>COUNTY</i>		<i>UTILITIES</i>			<i>SCHOOLS</i>				
<b>ST. LOUIS</b>		<b>ELECTRIC, GAS, PHONE, PUBLIC WATER &amp; SEWER</b>			<b>HIGH SCHOOL: MARQUETTE</b>		<b>MIDDLE SCHOOL: CRESTVIEW</b>		<b>ELEMENTARY: WILD HORSE</b>



The information contained herein has been supplied to us by the owner of this property or by a third party. Tom Shaw Realtors does not guarantee its accuracy and recommends buyers or tenant to verify all information herein and to obtain a full boundary survey before buying said home or property. **PRICES AND SPECIFICATIONS ARE SUBJECT TO CHANGE WITHOUT NOTICE**