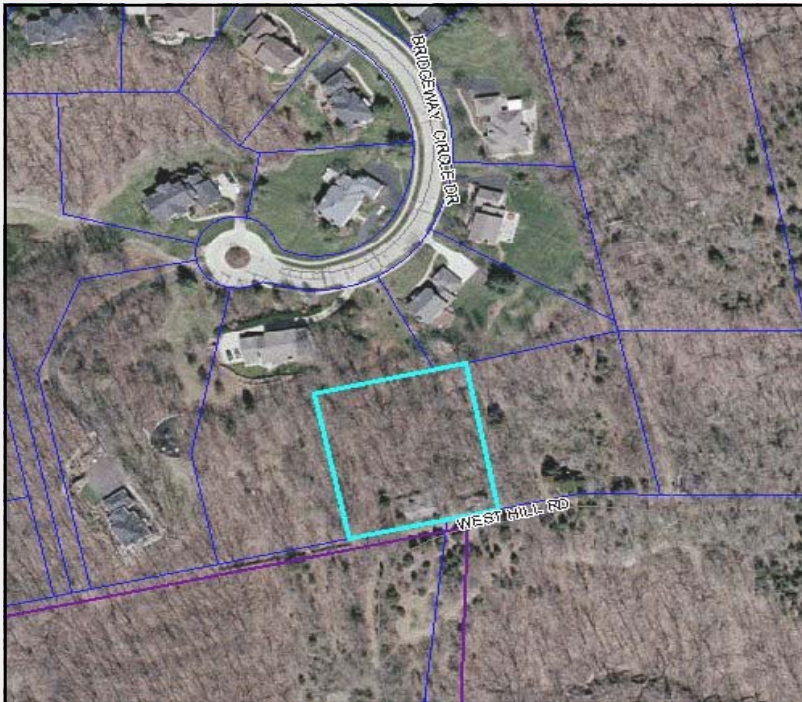


# *17609 Bridgeway Dr. Chesterfield, Mo 63005*

***SALE PRICE: \$115,000***



*Contact  
Cathy Shaw  
(636)346-4960  
squawky1@aol.com*

*Chip DeWitt  
314-503-3619  
Chip@shawrealtors.com*

Wow...Wait until you see this beautiful wooded lot connected to Wildhorse Subdivision. This lot sits high on a ridge and overlooks beautiful woods and is very private. The lot is accessed through an easement from Bridgeway Circle Dr in Wildhorse subdivision. The utilities are close by but are not connected yet.

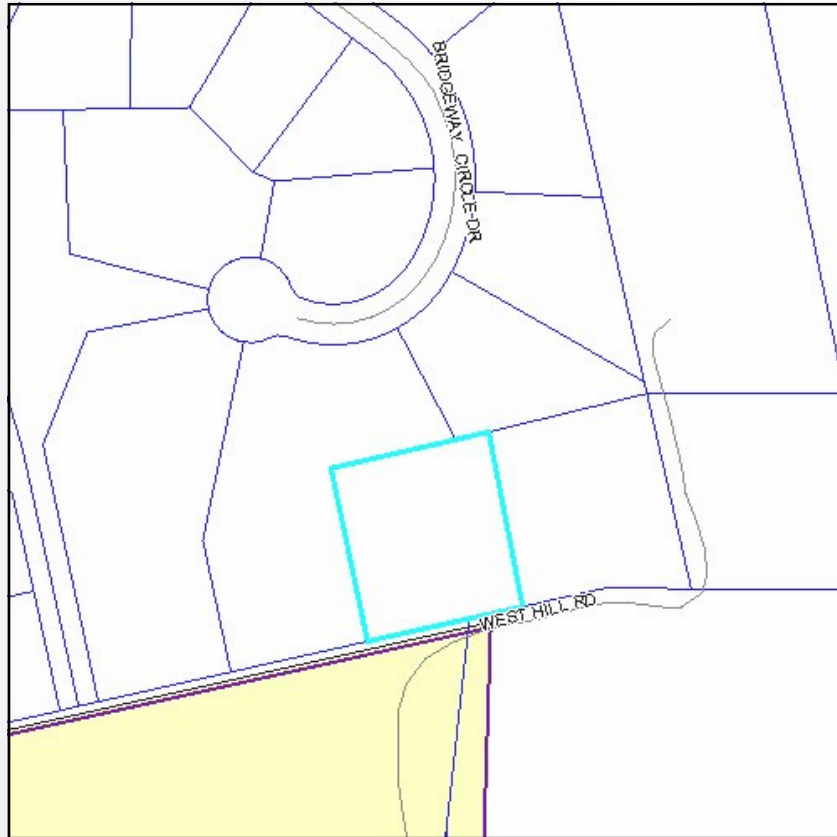
**DIRECTIONS:**

*Wildhorse Creek Road west of Long Rd to South into Wildhorse subdivision. Left on Bridgeway Circle Dr.*



200 Long Road ♦ Suite 160 ♦ Chesterfield, Missouri 63005

Office: (636) 532-1922 ♦ Fax: (636) 532-0222 ♦ info@shawrealtors.com ♦ www.shawrealtors.com



### Area Information / Property Description

County	St. Louis
Subdivision	Wildhorse
School District	Rockwood
High School	Lafayette
Middle School	Rockwood Valley
Elementary School	Chesterfield
Lot Size	1.00± Acres
Lot Description	Heavy Woods, Natural State
Street Access	Concrete
Taxes	\$176.00    2010
Associations Fees & Restrictions	None
Utilities	Water: Not connected / Sewer Not connected Electric: Yes / Gas: None Phone: Yes / Cable: N/A