

3742 Bear Tooth Ln. Wildwood, Mo 63069

SALE PRICE: \$159,990



Contact

*Cathy Shaw-Connely
(636) 346-4960
squawky1@aol.com*

FABULOUS BUILDING SITE in small, prestigious subdivision of 7 lots. Gentle slope up from road to level plateau, then gentle slope back down, perfect for walk out basement. Mostly wooded, but building site is fairly clear of trees. **ONE OF THE BEST LOTS LEFT IN STL COUNTY AT THIS PRICE !!!!**

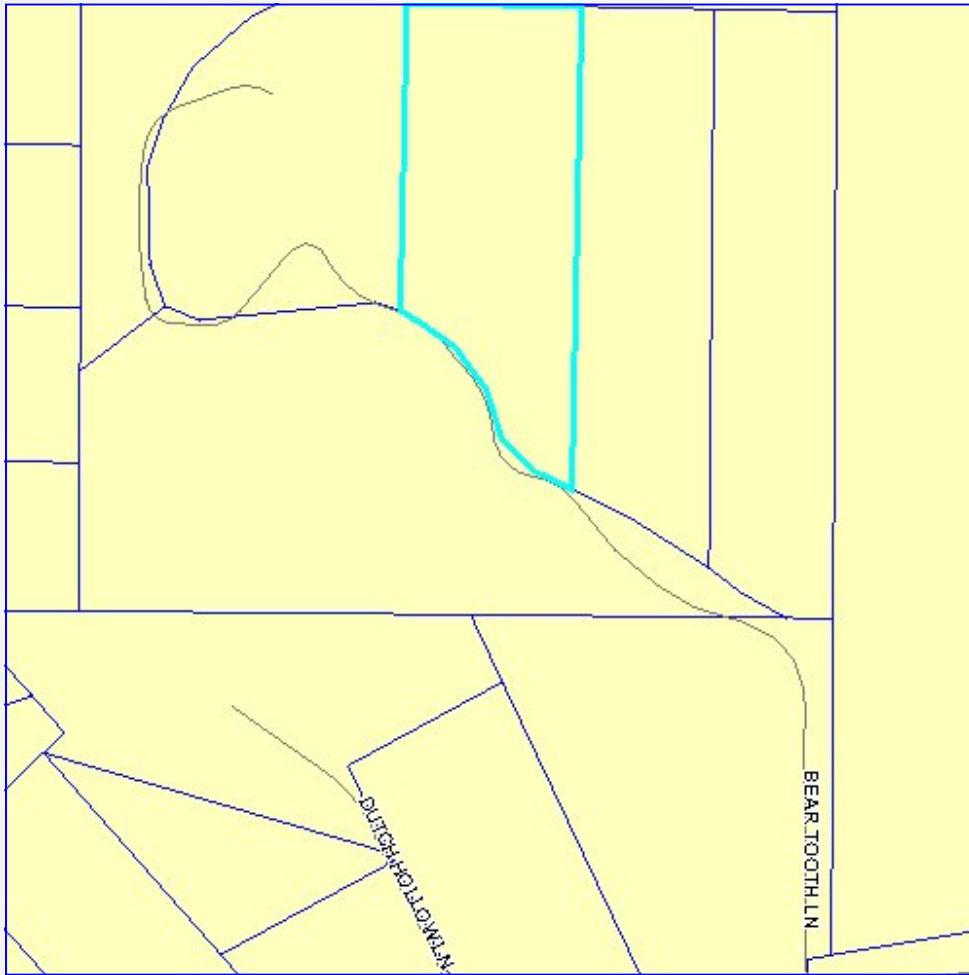
DIRECTIONS:

Highway 100/Manchester approx 5 miles west of Hwy 109 to street on right (Across from Stovall's)



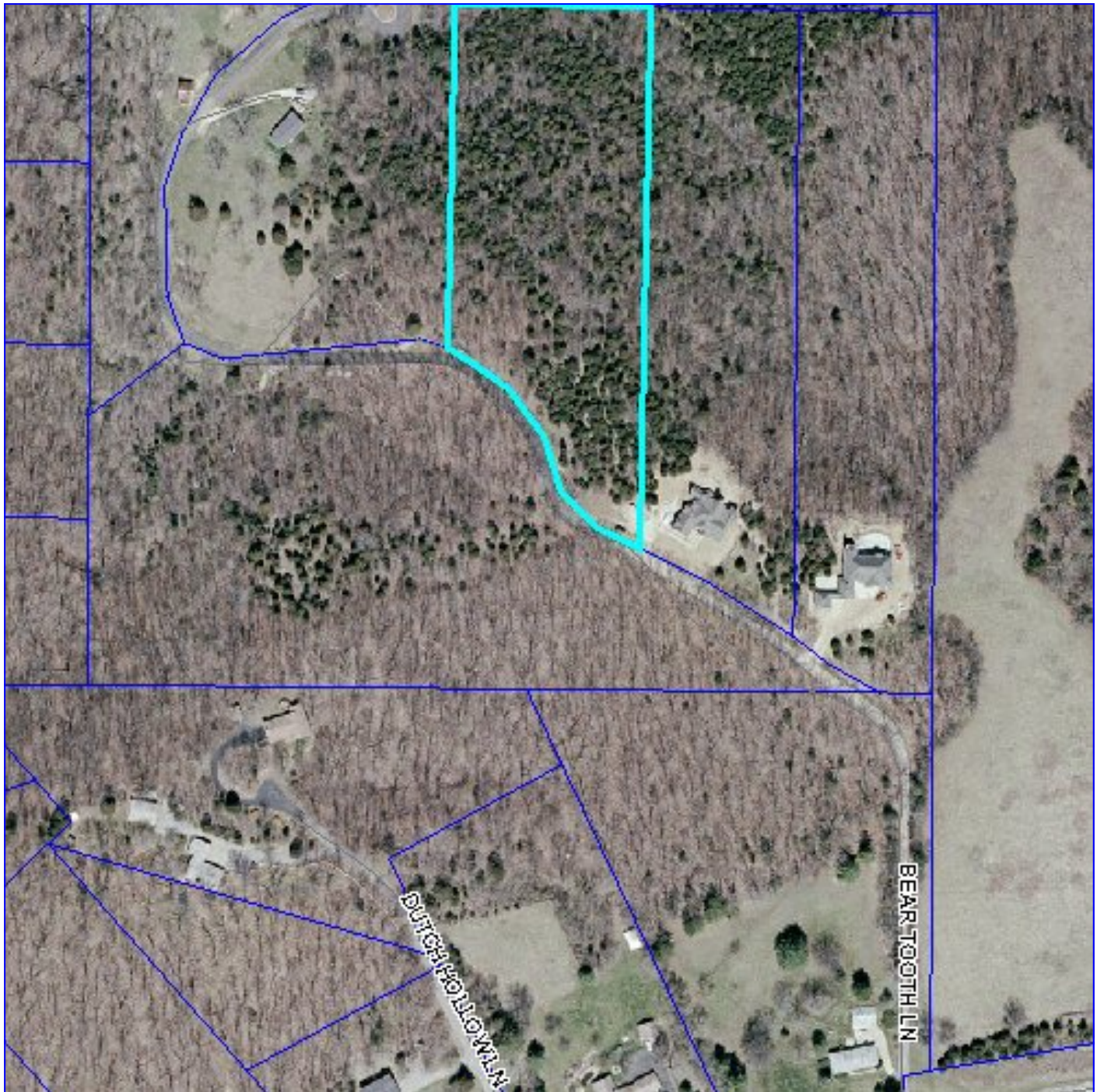
17813 Edison Ave. Suite 200 ♦ Chesterfield, Missouri 63005

Office: (636) 532-1922 ♦ Fax: (636) 532-0222 ♦ info@shawrealtors.com ♦ www.shawrealtors.com



Area Information / Property Description

County	St. Louis
Subdivision	Black Bear Ridge Estates
School District	Rockwood
High School	Lafayette
Middle School	Rockwood Valley
Elementary School	Babler
Lot Size	4.96± Acres
Lot Description	Wooded, Back to Trees
Street Access	Asphalt
Taxes	\$ 2,725 2010
Associations Fees & Restrictions	None
Utilities	Water: None Electric: Yes Phone: Yes Sewer: None



The information contained herein has been supplied to us by the owner of this property or by a third party. Tom Shaw Realtors does not guarantee its accuracy and recommends buyers or tenant to verify all information herein and to obtain a full boundary survey before buying said home or property. **PRICES AND SPECIFICATIONS ARE SUBJECT TO CHANGE WITHOUT NOTICE**