

955 Terry Rd. Augusta, Mo. 63332

Sale Price: \$449,900



NESTLED ON THIS WOODED 16.44+/- ACRES IS A STUNNING ONE AND HALF STORY WITH 2 STORY GREAT ROOM WHICH OFFERS WONDERFUL VIEWS OF NATURE'S BEST. THE KITCHEN HAS CUSTOM MAPLE CABINETS WITH A BROWN WASH. CENTER ISLAND WITH A BREAKFAST BAR, DOUBLE OVEN, GAS FIREPLACE, WOODS FLOORS THAT FLOWS IN TO THE BREAKFAST ROOM WITH BAY WINDOWS. GREAT ROOM HAS SEE THROUGH GAS FIREPLACE IN TO MASTER BEDROOM SUITE. MASTER BATH HAS DOUBLE SINKS, SEPARATE WHIRLPOOL TUB AND SHOWER. MASTER BEDROOM AND GREAT ROOM HAS ACCESS TO LARGE DECK. UPPER FLOOR HAS LARGE FAMILY ROOM, 2 BEDROOMS WITH A JACK AND JILL BATHROOM WITH 2 SEPARATE SINKS, LOFT AREA LOOKS OVER GREAT ROOM. 2 CAR INSULATED GARAGE. DETACHED 30 X 40' GARAGE WITH 12' DOOR AND A HEATED AND COOLED OFFICE. TERRACED ROCKED LANDSCAPING LEADS TO A LARGE FIRE PIT. SELLERS ARE BUYING 4± ACRES FROM ADJOINING NEIRHBOR TO MAKE THE ACREAGE 16.44± ACRES. WHICH HAS NOT BEEN RECORDED YET.

STYLE	ROOMS	BEDROOMS	BATHS	GARAGE	LOT SIZE	SCHOOL DISTRICT
1.5 Story	9	3	2 Full 1 Half	2 Car	16.44± Acres	Washington

DIRECTIONS: HWY 94 SOUTH OF DEFIANCE GO 2.6 TO RIGHT ON TERRY RD GO 2.3 MILES TO SIGN ON RIGHT



Offered By:

Chip DeWitt

(314) 503-3619

Chip@shawrealtors.com



Matt Shaw

(314) 503-4872

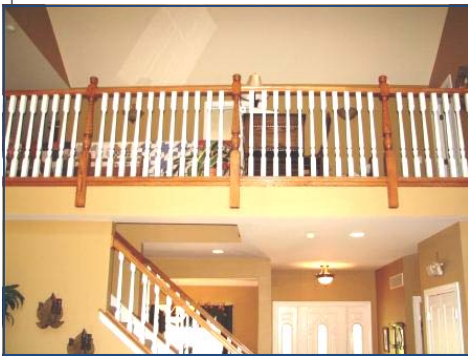
Matt@shawrealtors.com



TOM SHAW REALTORS

17813 Edison Avenue . Chesterfield, MO 63005
CALL US AT (636) 532-1922

www.shawrealtors.com



FAMILY ROOM	LIVING ROOM	GREAT ROOM	DINING ROOM	DEN	KITCHEN	BREAKFAST ROOM
N/A	N/A	20 X 16	13 X 12	N/A	16 X 12	12 X 12

MASTER BED	SITTING BEDROOM	GUEST BEDROOM	GUEST BEDROOM	GUEST BEDROOM	RECREATION ROOM	LAUNDRY ROOM
16 X 15	N/A	12 X 11	12 X 12	12 X 11	23 X 12	9 X 6

TOM SHAW REALTORS

17813 Edison Avenue . Chesterfield, MO 63005
 CALL US AT (636) 532-1922

www.shawrealtors.com



COUNTY	UTILITIES	SCHOOLS
St. Charles	Electric, Telephone, Public Water & Septic	High School: Washington Middle School: Washington Elementary: Augusta

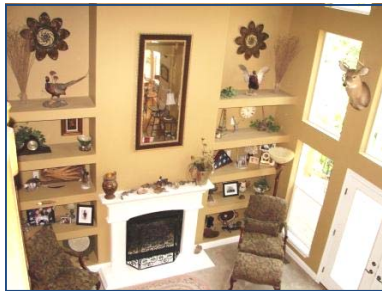
The information contained herein has been supplied to us by the owner of this property or by a third party. Tom Shaw Realtors does not guarantee its accuracy and recommends buyers or tenant to verify all information herein and to obtain a full boundary survey before buying said home or property. PRICES AND SPECIFICATIONS ARE SUBJECT TO CHANGE WITHOUT NOTICE



TOM SHAW REALTORS

17813 Edison Avenue . Chesterfield, MO 63005
CALL US AT (636) 532-1922

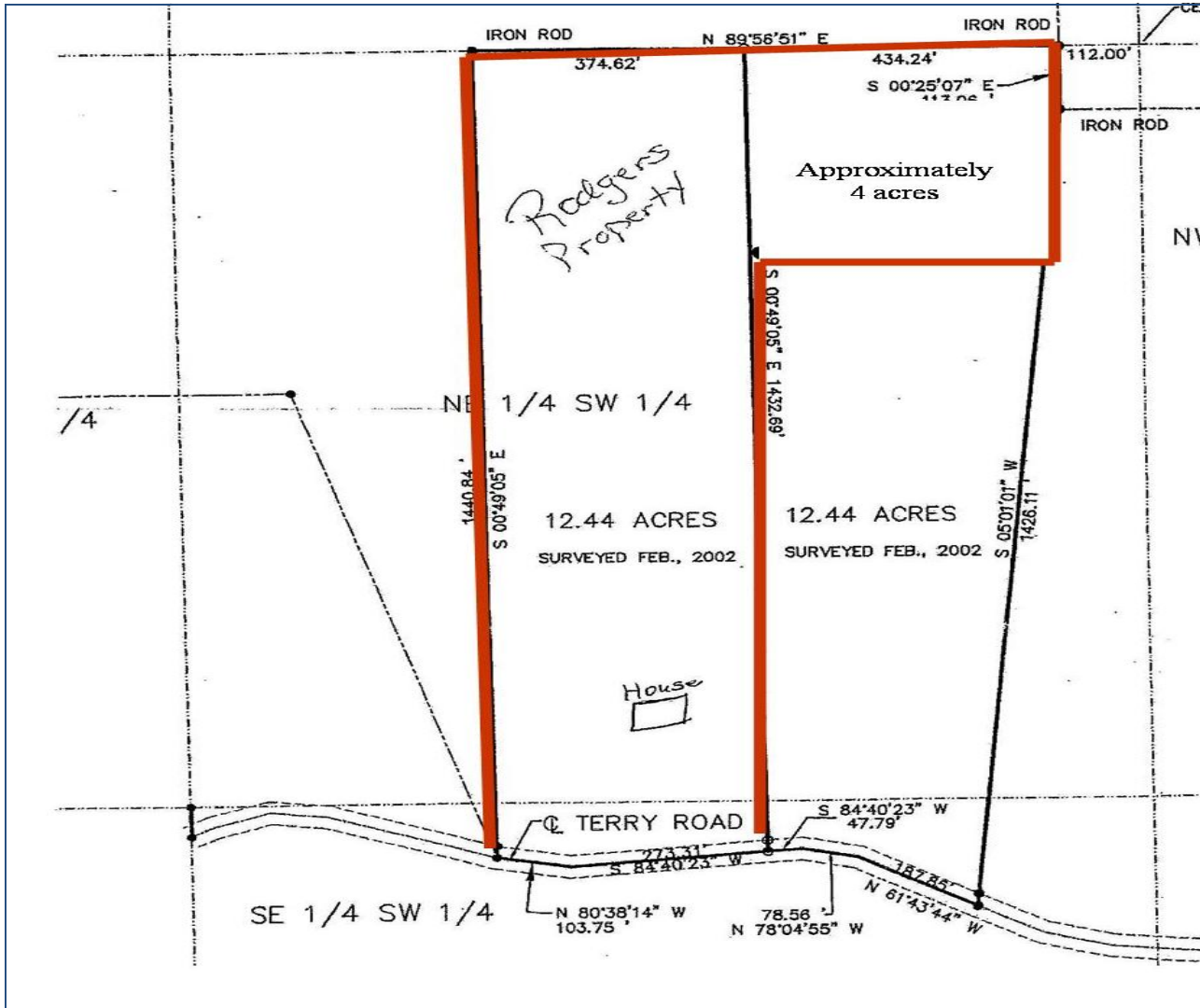
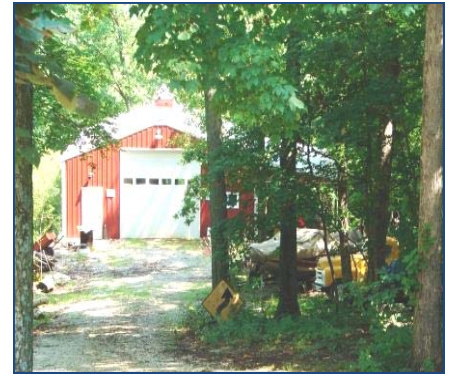
www.shawrealtors.com



TOM SHAW
REALTORS

17813 Edison Avenue . Chesterfield, MO 63005
CALL US AT (636) 532-1922

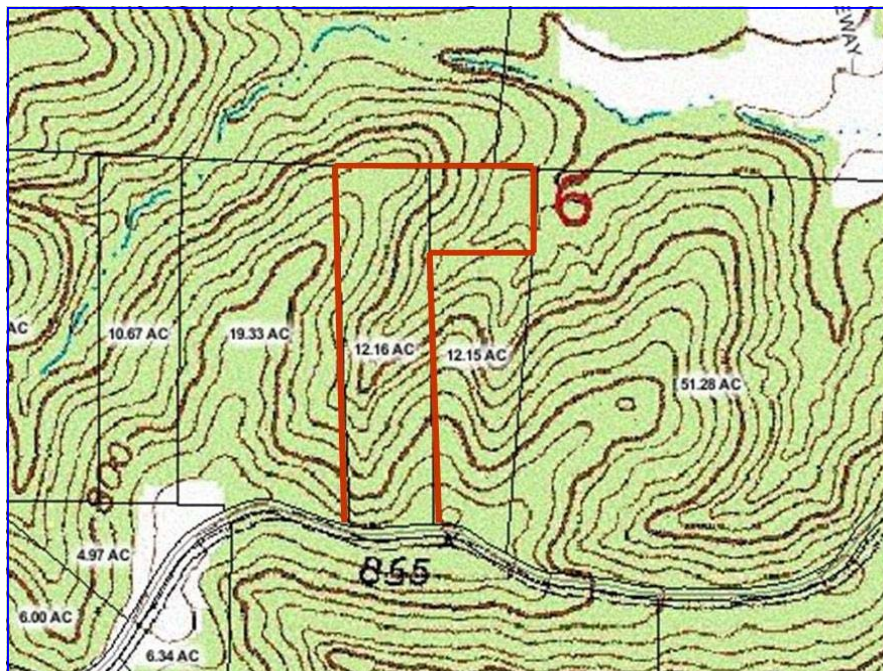
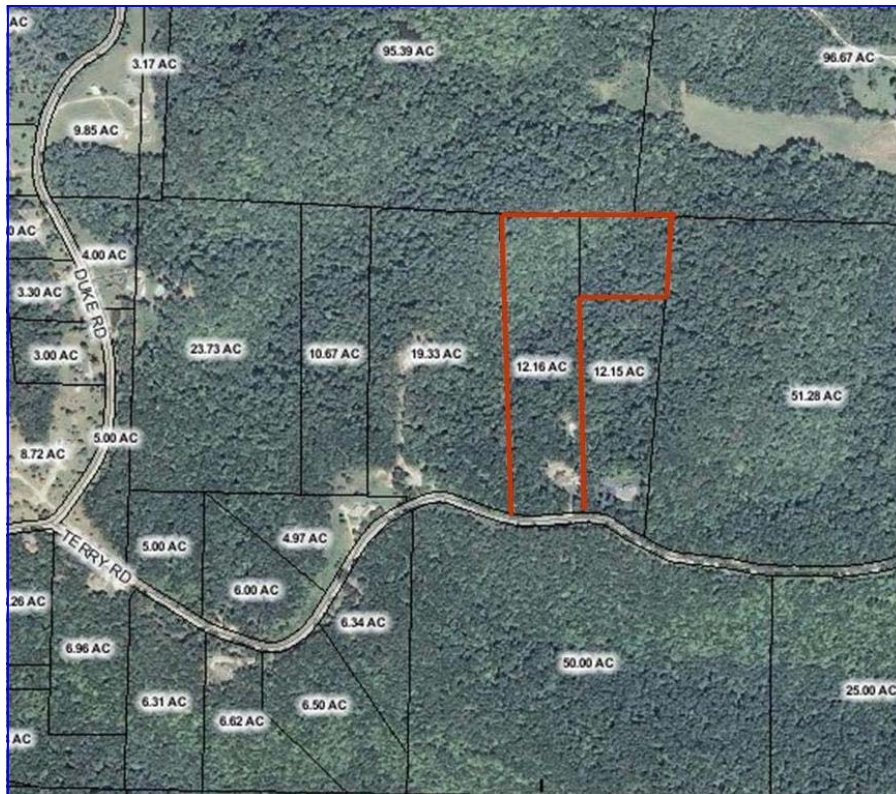
www.shawrealtors.com



TOM SHAW
REALTORS

17813 Edison Avenue . Chesterfield, MO 63005
CALL US AT (636) 532-1922

www.shawrealtors.com



TOM SHAW REALTORS

17813 Edison Avenue . Chesterfield, MO 63005
 CALL US AT (636) 532-1922

www.shawrealtors.com