

Lot 35 Lakewood Hills Pacific, Mo 63069

SALE PRICE: \$34,900



Contact

Patrick Shaw

(314) 503-4880

patrick@shawrealtors.com

Matt Shaw

(314) 503-4872

mjs1922@aol.com

1.1± ACRES WOODED LOT IN ROCKWOOD SCHOOL DISTRICT WITH LOWER JEFFERSON COUNTY TAXES! PUBLIC WATER! LAKE ACCESS!

DIRECTIONS:

*I-44 to the Eureka Exit, Go south on Hwy W (109)
Through Eureka to right on Hwy FF to right on
Hwy F to on left on Lakewood Hills to lot on right*



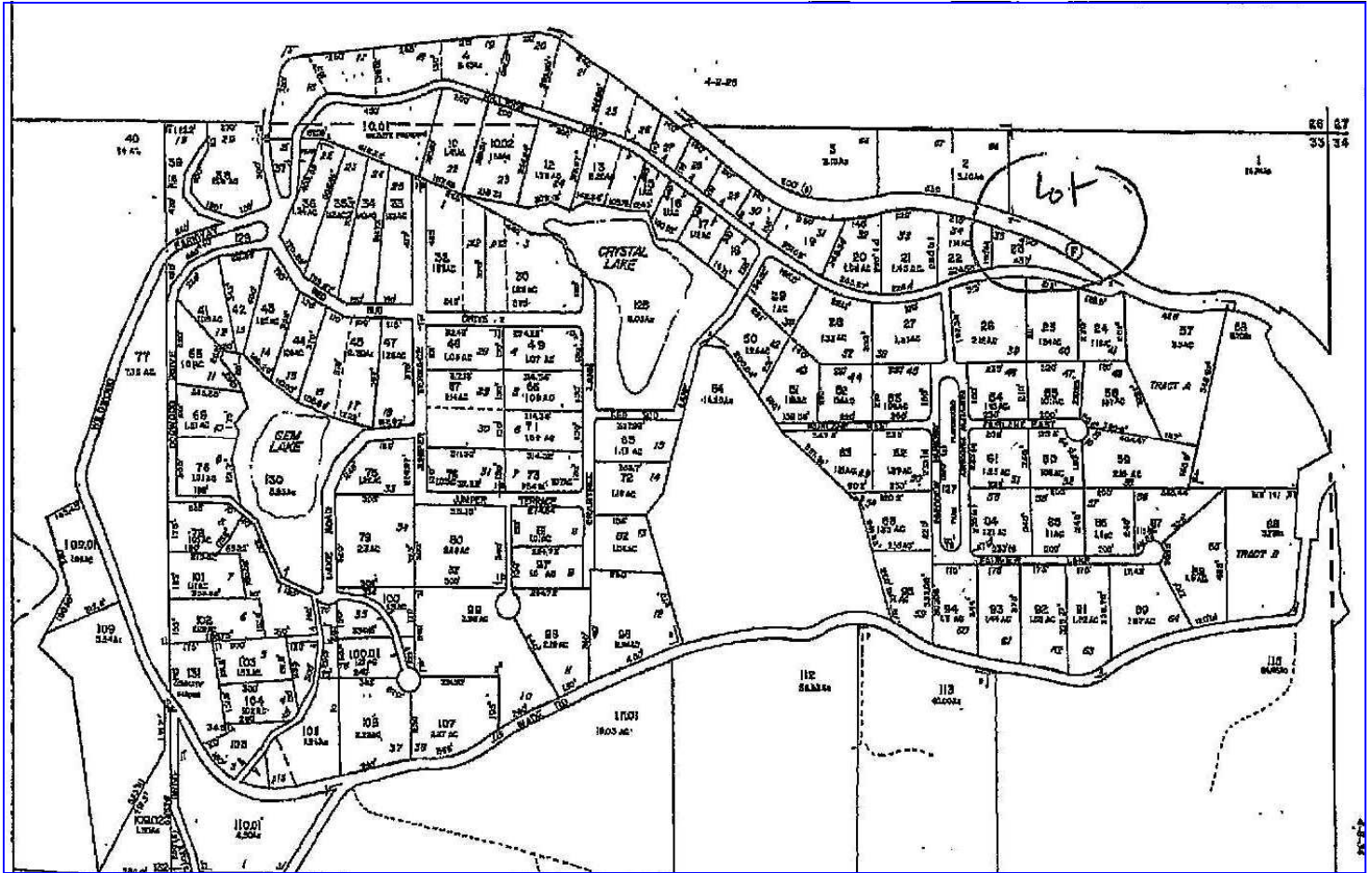
200 Long Road ♦ Suite 160 ♦ Chesterfield, Missouri 63005

Office: (636) 532-1922 ♦ Fax: (636) 532-0222 ♦ info@shawrealtors.com ♦ www.shawrealtors.com



Area Information / Property Description

County	Jefferson
Subdivision	Lakewood Hills
School District	Rockwood
High School	Eureka
Middle School	LaSalle Springs
Elementary School	Geggie
Lot Size	1.1± Acres
Lot Description	Wooded Lot
Street Access	Asphalt
Taxes	\$165.00
Associations Fees & Restrictions	Yes: \$250.00
Utilities	Water: Public Electric: Yes Phone: Yes Sewer: None



The information contained herein has been supplied to us by the owner of this property or by a third party. Tom Shaw Realtors does not guarantee its accuracy and recommends buyers or tenant to verify all information herein and to obtain a full boundary survey before buying said home or property. **PRICES AND SPECIFICATIONS ARE SUBJECT TO CHANGE WITHOUT NOTICE**

