

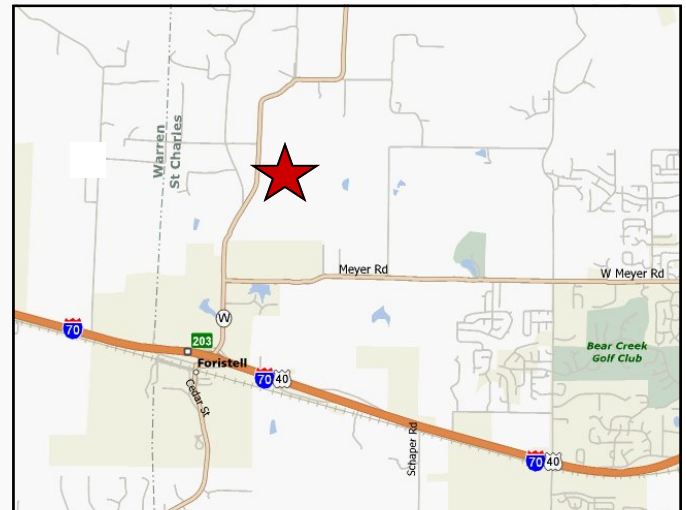
FOR SALE

**22± Acres Hwy W
Foristell, Mo. 63385**



SALE PRICE: \$504,000

Invest in the future of St. Charles County. Great long hold, possible high density zoning down the road. Great for private estate or hunting. McCoy Creek runs through property. Wentzville School District



DIRECTIONS: From Hwy W north of Foristell 1.5 miles to property on east side of Hwy W.

Tom Shaw Jr.

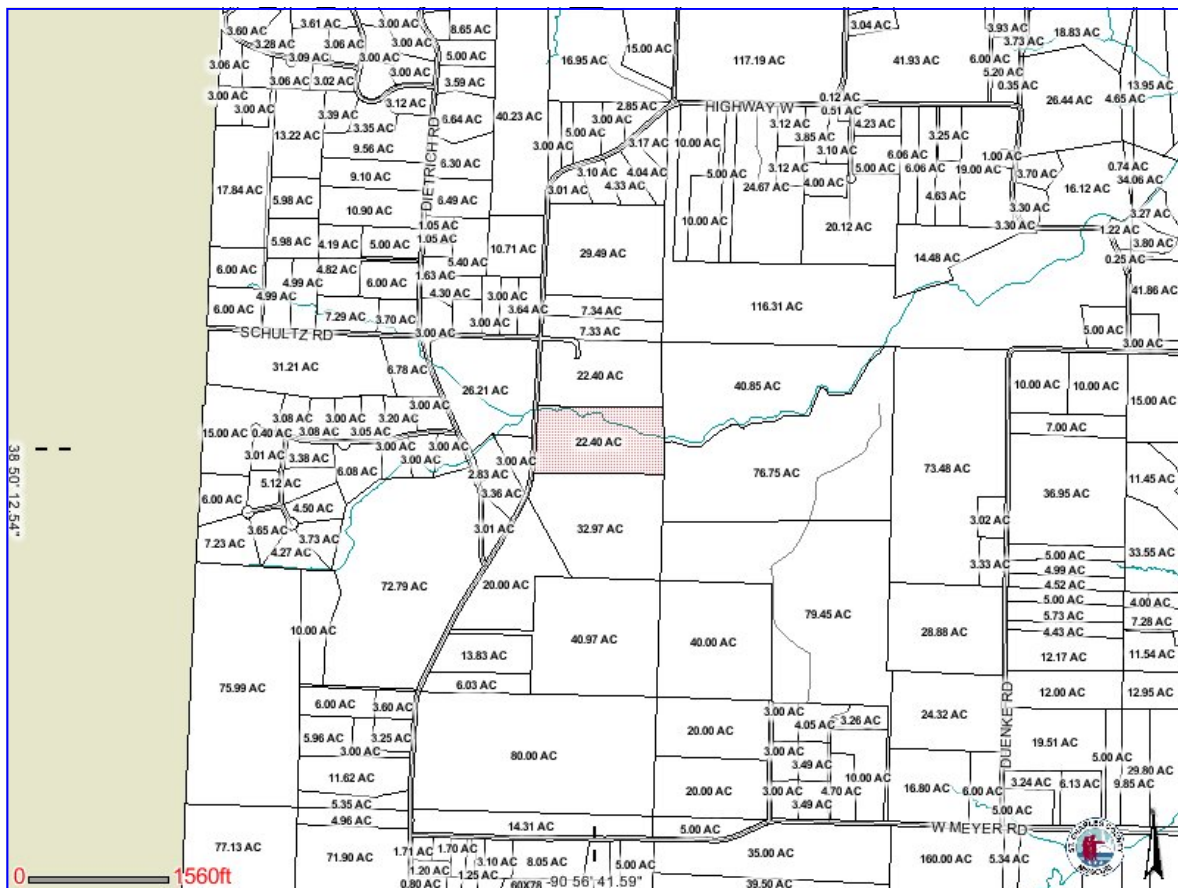
Contact: (314) 283-5064

tshawjr@shawrealtors.com



200 Long Road ♦ Suite 160 ♦ Chesterfield, Missouri 63005

Office: (636) 532-1922 ♦ Fax: (636) 532-0222 ♦ info@shawrealtors.com ♦ www.shawrealtors.com



Area Information / Property Description

County	St. Charles		
Subdivision	None		
School District	Wentzville		
High School	Holt		
Middle School	South Middle		
Elementary School	Heritage		
Lot Size	22.40± Acres		
Lot Description	Nature State		
Street Access	Paved / County		
Taxes	\$2,304		
Associations Fees & Restrictions	None		
Utilities	Water: None /	Sewer: None	
	Electric: Yes /	Gas: None	
	Phone: Yes /	Cable: None	

