

# *1530 Bedford Forge Ct. #23* *Chesterfield, MO 63017*

***SALE PRICE: \$139,900***



***Contact***

***Cathy Shaw-Connelly***

***(636) 346-4960***

***squawky1@aol.com***

***Sheena Connelly***

***(636) 236-7036***

***sheeconnelly@gmail.com***



Wow! New carpet, some new tile, & freshly painted!! Spacious top floor unit. Open floor plan, divided bedroom floor plan. French doors in living room lead out to balcony. Den adjoins living room. Laundry area also in this unit. Kitchen has window. Amenities include a pool, club house, lake and beautiful park like grounds. Location is convenient to HWY 40/64, shopping and transportation. This building also has an elevator for your convenience.

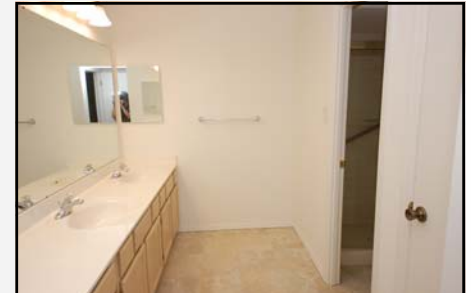
<i>STYLE</i>	<i>ROOMS</i>	<i>BEDROOMS</i>	<i>BATHS</i>	<i>GARAGE</i>	<i>LOT SIZE</i>	<i>SCHOOL DISTRICT</i>
<b><i>Condo</i></b>	<b><i>6</i></b>	<b><i>2</i></b>	<b><i>2Full</i></b>	<b><i>1</i></b>	<b><i>N/A</i></b>	<b><i>Parkway Central</i></b>

**DIRECTIONS:** Clarkson to east on Baxter to left on Old Baxter to end of street. Right into Hedgeford Dr to Bedford Forge Dr to Bedford Forge Ct.



17813 Edison Ave ♦ Suite 200 ♦ Chesterfield, Missouri 63005

Office: (636) 532-1922 ♦ Fax: (636) 532-0222 ♦ info@shawrealtors.com ♦ www.shawrealtors.com



<i>FAMILY ROOM</i>	<i>LIVING ROOM</i>	<i>HEARTH ROOM</i>	<i>DINING ROOM</i>	<i>DEN</i>	<i>KITCHEN</i>	<i>BREAKFAST ROOM</i>
<i>N/A</i>	<i>16 X 15</i>	<i>N/A</i>	<i>16 X 19</i>	<i>13 X 13</i>	<i>14 X 8</i>	<i>N/A</i>

<i>MASTER BEDROOM</i>	<i>GUEST BEDROOM</i>	<i>GUEST BEDROOM</i>	<i>GUEST BEDROOM</i>	<i>GUEST BEDROOM</i>	<i>RECREATION ROOM</i>	<i>LAUNDRY ROOM</i>
<i>17 X 13</i>	<i>13 X 10</i>	<i>N/A</i>	<i>N/A</i>	<i>N/A</i>	<i>N/A</i>	

<i>CONSTRUCTION</i>	<i>AGE</i>	<i>HEATING</i>	<i>COOLING</i>	<i>FIREPLACES</i>	<i>SUBDIVISION</i>	<i>AMENITIES</i>	<i>TAXES</i>	<i>ASSOCIATIONS FEES</i>
<i>VINYL SIDING</i>	<i>36</i>	<i>ELECTRIC: FORCED AIR</i>	<i>ELECTRIC: CENTRAL, ZONED</i>	<i>1 FULL MASONRY</i>	<i>BRANDYWINE</i>	<i>CLUB-HOUSE INGROUND POOL</i>	<i>\$1,913 2010</i>	<i>\$303 MONTHLY</i>

<i>COUNTY</i>	<i>UTILITIES</i>	<i>SCHOOLS</i>
<i>ST. LOUIS</i>	<i>ELECTRIC, PHONE, PUBLIC WATER &amp; SEWERS</i>	<i>HIGH SCHOOL: PARKWAY CENTRAL MIDDLE SCHOOL: PARKWAY CENTRAL ELEMENTARY: SHENANDOAH</i>