

*77± Acres
26308 Pike 247
Clarksville, Mo 63336*

SALE PRICE: \$325,000



*Chip DeWitt
(314) 503-3619
chip@shawrealtors.com*

*Tom Shaw Jr.
(314) 283-5064
tomshawjr@yahoo.com*

WHAT A FIND! 77+/- ACRES FARM WITH 3 BEDROOM 1 BATH HOME. IDEAL WEEKEND RETREAT. GREAT FOR HUNTING! POND COULD BE TURN IN TO A LARGER LAKE. MOST OF THE PROPERTY IS IN CROPS. BEAUTIFUL VIEWS OF THE KNOBS OF PIKE COUNTY.

DIRECTIONS:

HWY 70 TO NORTH ON HWY 79 TO 3.8 MILES PAST CITY OF CLARKSVILLE TO SIGN. CALUMET CREEK ACCESS 245 TURN LEFT. THE 77 ACRES WILL BE ON RIGHT AT RD 247 OR TAKE HWY 40/61 TO EAST ON HWY B TO LEFT ON HWY 79 OR FROM LOUISIANA SOUTH ON HWY 79 FOR 5 MILES TO SAME



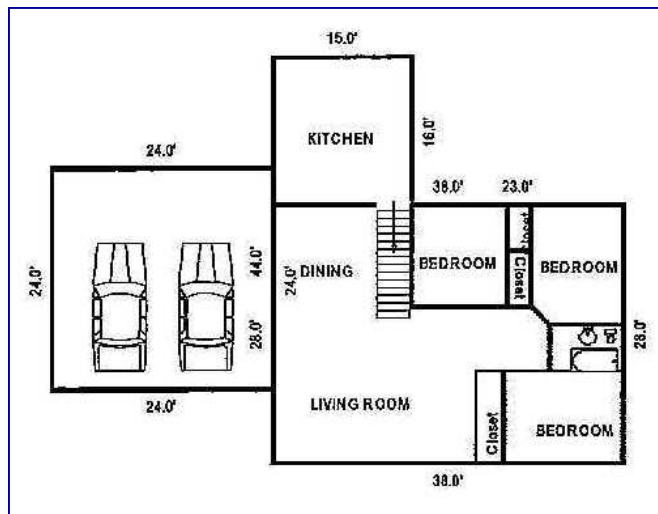
200 Long Road ♦ Suite 160 ♦ Chesterfield, Missouri 63005

Office: (636) 532-1922 ♦ Fax: (636) 532-0222 ♦ info@shawrealtors.com ♦ www.shawrealtors.com

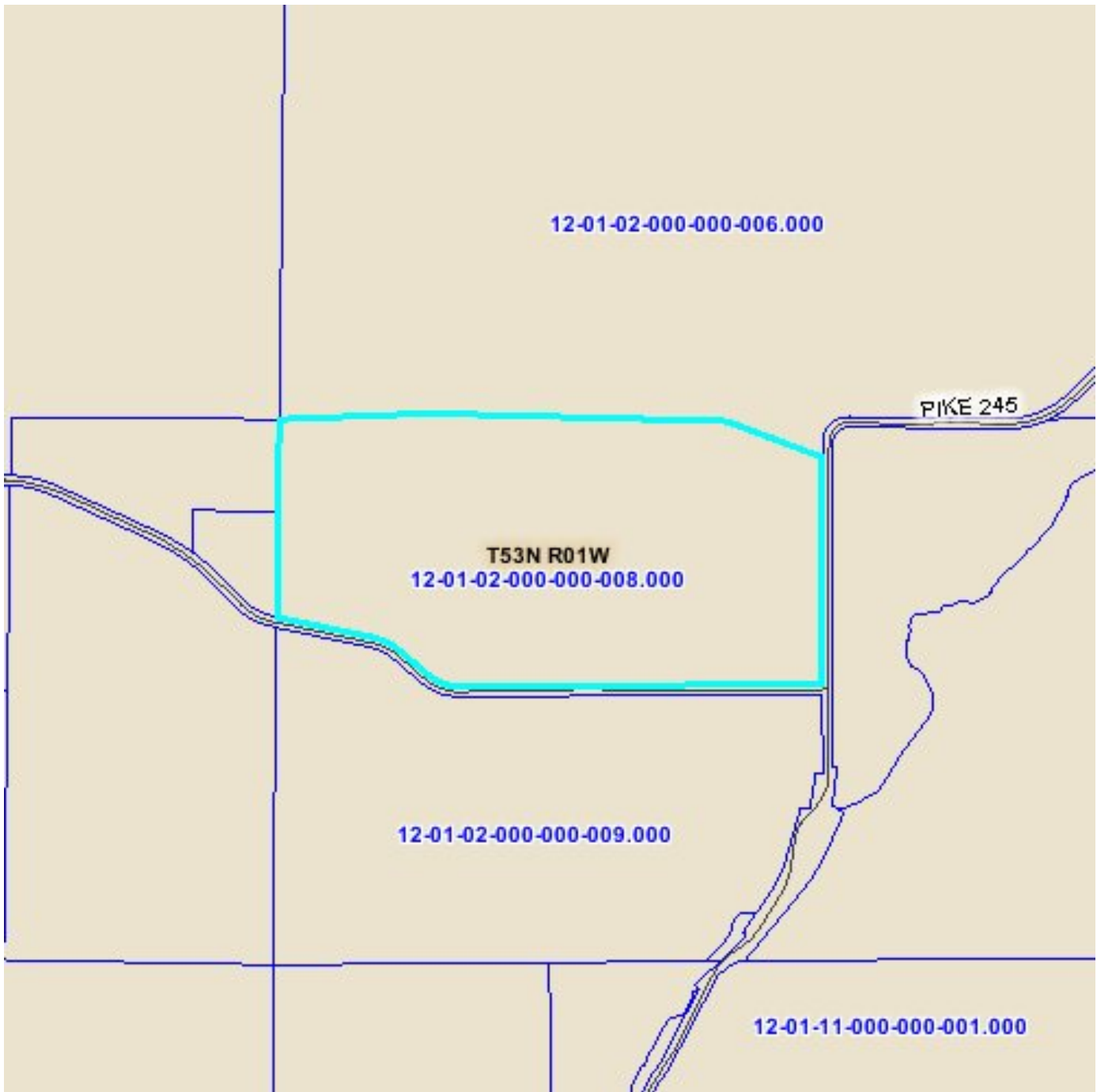


Area Information / Property Description

County	PIKE
Subdivision	None
School District	Boncl
High School	Your can choose your own between Louisiana or Clopton
Middle School	Boncl
Elementary School	Boncl
Lot Size	77.00± Acres
Lot Description	Pasture, Horses, Wooded, Live Stock, Farming , Hunting & Fishing, Crops
Street Access	County, Asphalt and gravel
Taxes	\$ 593.34 2008
Associations Fees & Restrictions	None
Utilities	Water: Public Water, Well Electric: Yes Phone: Yes Sewer: Septic



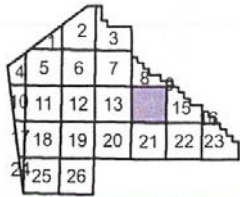
The information contained herein has been supplied to us by the owner of this property or by a third party. Tom Shaw Realtors does not guarantee its accuracy and recommends buyers or tenant to verify all information herein and to obtain a full boundary survey before buying said home or property. **PRICES AND SPECIFICATIONS ARE SUBJECT TO CHANGE WITHOUT NOTICE**



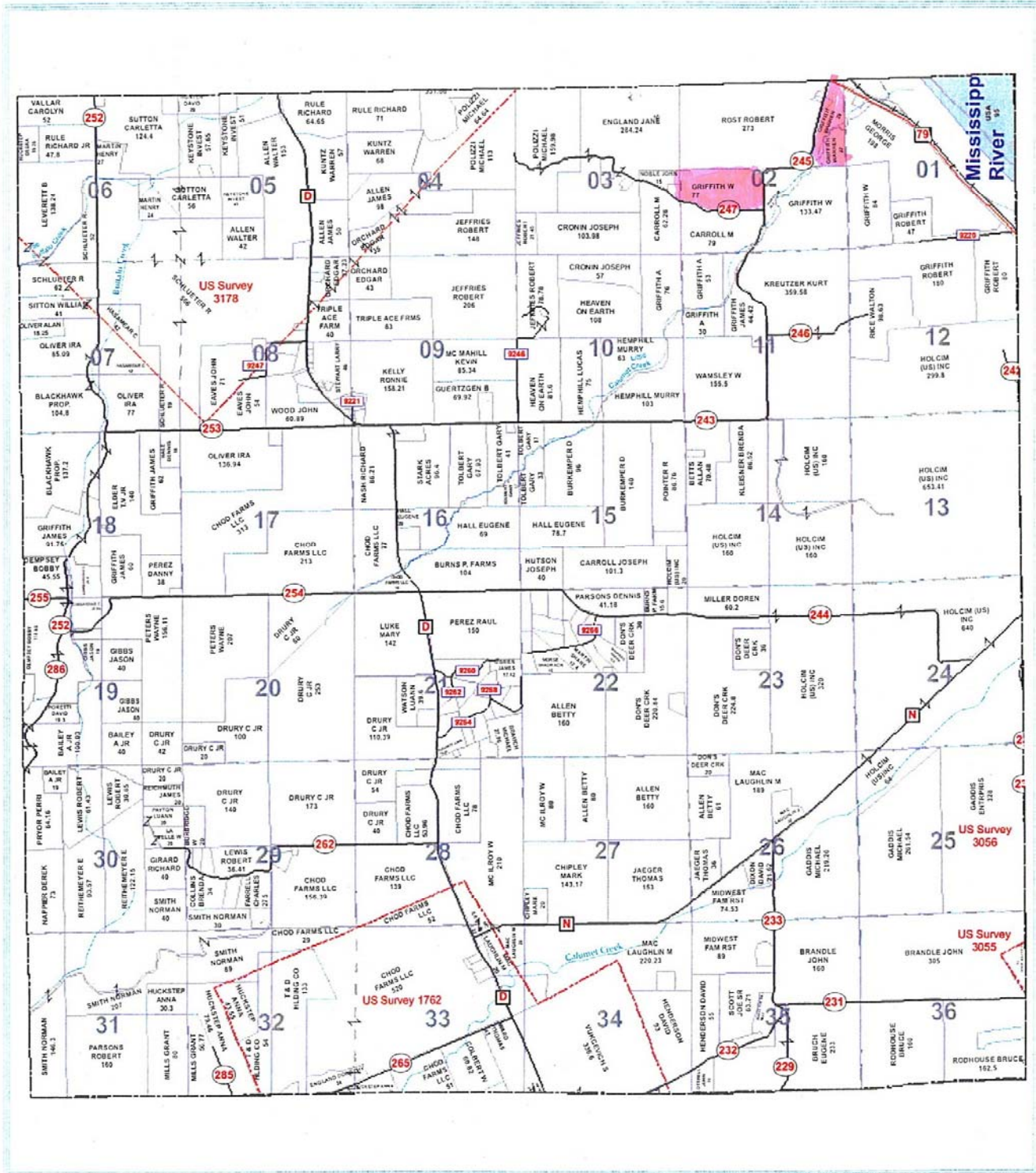
The information contained herein has been supplied to us by the owner of this property or by a third party. Tom Shaw Realtors does not guarantee its accuracy and recommends buyers or tenant to verify all information herein and to obtain a full boundary survey before buying said home or property. **PRICES AND SPECIFICATIONS ARE SUBJECT TO CHANGE WITHOUT NOTICE**



The information contained herein has been supplied to us by the owner of this property or by a third party. Tom Shaw Realtors does not guarantee its accuracy and recommends buyers or tenant to verify all information herein and to obtain a full boundary survey before buying said home or property. **PRICES AND SPECIFICATIONS ARE SUBJECT TO CHANGE WITHOUT NOTICE**



T53N R01W



The information contained herein has been supplied to us by the owner of this property or by a third party. Tom Shaw Realtors does not guarantee its accuracy and recommends buyers or tenant to verify all information herein and to obtain a full boundary survey before buying said home or property. **PRICES AND SPECIFICATIONS ARE SUBJECT TO CHANGE WITHOUT NOTICE**