

17915 Pond Bridge Dr. Wildwood, Mo. 63038

SALE PRICE: \$789,900



Contact

Cathy Shaw-Connelly

(636) 346-4960

squawky1@aol.com

Karen Burns

(314) 920-3131

karenburns11@aol.com



Equestrian property just minutes from Babler State Park. 1.5-story updated stone/brick with inground pool on tranquil 3+/- acres. One of few flat lots in the area. Dick Busch, Country-French, Custom-built, Two-home street, facing woods & backing to open ground. Lovely open kitchen, breakfast room & hearth room w/ hardwood floors, Maple glazed cabinets & granite counters. Separate, formal dining room. Private main floor master suite w/ vaulted ceilings. Additional first floor bedroom for office or baby. Great room has cozy fireplace & built-in bookcases. Palladian windows open to 17x34 heated, gunite pool, stone surround, waterfall and wonderful view. Professionally finished lower level w/ rec room, media room w/built-in 52 HDTV & surround sound, bar, play or pool table room, storage & workout rooms. Three-car garage & circle drive. Expansive back deck to enjoy your land. Top-rated Rockwood schools.

<i>STYLE</i>	<i>ROOMS</i>	<i>BEDROOMS</i>	<i>BATHS</i>	<i>Garage</i>	<i>LOT SIZE</i>	<i>SCHOOL DISTRICT</i>
<i>1½ STORY</i>	<i>13</i>	<i>5</i>	<i>3 Full 1 Half</i>	<i>3</i>	<i>3.00± ACRES</i>	<i>ROCWOOD</i>

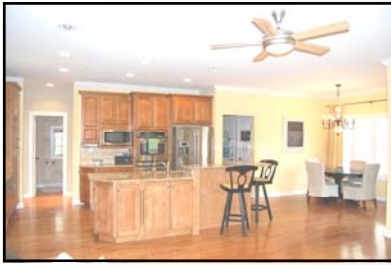
DIRECTIONS:

Hwy 109 south of Wild horse Creek, approx. 1 mile west on Pond Ridge. Stay to right & pass round-a-bout to house on right.



200 Long Road ♦ Suite 160 ♦ Chesterfield, Missouri 63005

Office: (636) 532-1922 ♦ Fax: (636) 532-0222 ♦ info@shawrealtors.com ♦ www.shawrealtors.com

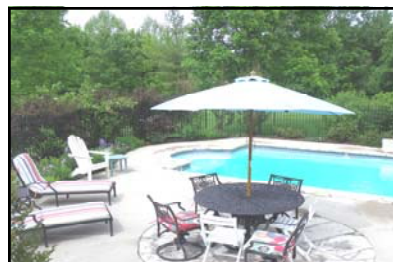
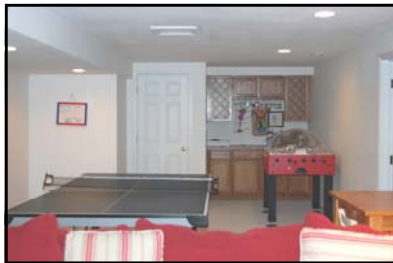
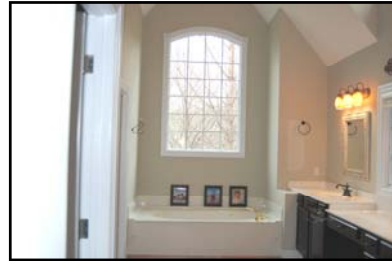


<i>GREAT ROOM</i>	<i>LIVING ROOM</i>	<i>HEARTH ROOM</i>	<i>DINING ROOM</i>	<i>DEN</i>	<i>KITCHEN</i>	<i>BREAKFAST ROOM</i>
<i>21' X 14'</i>	<i>N / A</i>	<i>17' X 12'</i>	<i>14' X 12'</i>	<i>N / A</i>	<i>11' X 11'</i>	<i>19' X 15'</i>

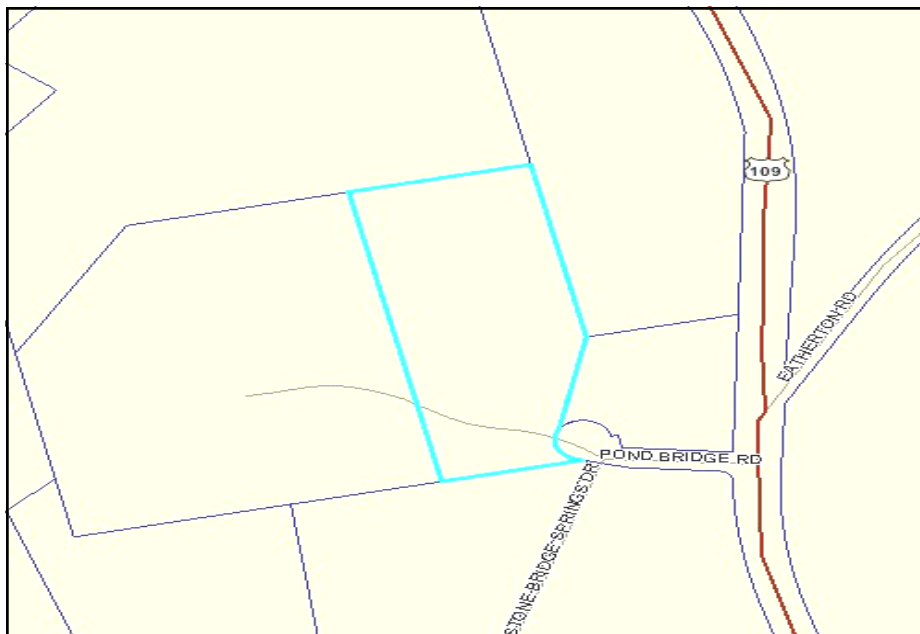
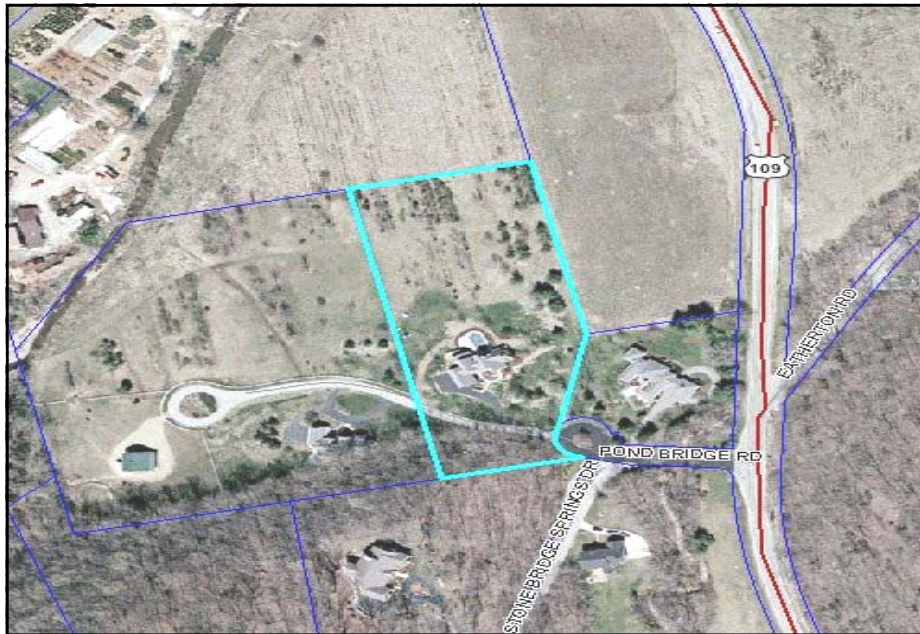
<i>MASTER BEDROOM</i>	<i>GUEST BEDROOM</i>	<i>GUEST BEDROOM</i>	<i>GUEST BEDROOM</i>	<i>GUEST BEDROOM</i>	<i>RECREATION ROOM</i>	<i>LAUNDRY ROOM</i>
<i>17' X 12'</i>	<i>15' X 12'</i>	<i>17' X 12'</i>	<i>13' X 12'</i>	<i>14' X 12'</i>	<i>23' X 15'</i>	<i>8' X 6'</i>

<i>CONSTRUCTION</i>	<i>AGE</i>	<i>HEATING</i>	<i>COOLING</i>	<i>FIREPLACES</i>	<i>LOT DESCRIPTION</i>	<i>AMENITIES</i>	<i>TAXES</i>	<i>ASSOCIATIONS FEES</i>
<i>BRICK STONE MASONRY</i>	<i>15</i>	<i>ELECTRIC: FORCED AIR HUMIDIFER ZONED</i>	<i>ELECTRIC: CENTRAL CEILING FAN ZONED</i>	<i>1 WOOD BURNING FULL MASONRY</i>	<i>CUL-DE-SAC SUITABLE FOR HORSES LEVEL BACKS TO OPEN GROUND PARTIAL FENCING</i>	<i>IN-GROUND POOL</i>	<i>\$8,622.00 2010</i>	<i>\$1200,000 YEARLY</i>

<i>COUNTY</i>	<i>UTILITIES</i>	<i>SCHOOLS</i>
<i>ST. LOUIS</i>	<i>ELECTRIC, PHONE, WELL & SEPTIC</i>	<i>HIGH SCHOOL: LAYFAYETTE MIDDLE SCHOOL: ROCKWOOD VALLEY ELEMENTARY: CHESTERFIELD</i>



The information contained herein has been supplied to us by the owner of this property or by a third party. Tom Shaw Realtors does not guarantee its accuracy and recommends buyers or tenant to verify all information herein and to obtain a full boundary survey before buying said home or property. **PRICES AND SPECIFICATIONS ARE SUBJECT TO CHANGE WITHOUT NOTICE**



The information contained herein has been supplied to us by the owner of this property or by a third party. Tom Shaw Realtors does not guarantee its accuracy and recommends buyers or tenant to verify all information herein and to obtain a full boundary survey before buying said home or property. **PRICES AND SPECIFICATIONS ARE SUBJECT TO CHANGE WITHOUT NOTICE**