

17624 Myrtlewood Dr. Wildwood, Mo. 63005

SALE PRICE: \$589,000

Contact

Cathy Shaw-Connely

(636) 346-4960

squawky1@aol.com



Fantastic two story home on quiet cul-de-sac street with full brick front elevation and loads of updates. Home features new, neutral carpet, beautiful marble flooring, granite counters, center island, gas cook top and updated appliances, vaulted sunroom, coffered ceilings in master suite and luxurious master bath with Jacuzzi tub and separate shower, huge walk-in closet, stunning finished lower level. Multi-level deck looks out to woods that offer tons of privacy. Subdivision offers pools, tennis courts and walking trails.

STYLE	ROOMS	BEDROOMS	BATHS	GARAGE	LOT SIZE	SCHOOL DISTRICT
2 STORY	10	5	4 Full 1 Half	3	.58± Acres	Rockwood

DIRECTIONS: Hwy 40 to Long Road, right on Wildhorse Creek Road, to left on Wildhorse Parkway to left on Myrtlewood.



17813 Edison Ave ♦ Suite 200 ♦ Chesterfield, Missouri 63005

Office: (636) 532-1922 ♦ Fax: (636) 532-0222 ♦ info@shawrealtors.com ♦ www.shawrealtors.com



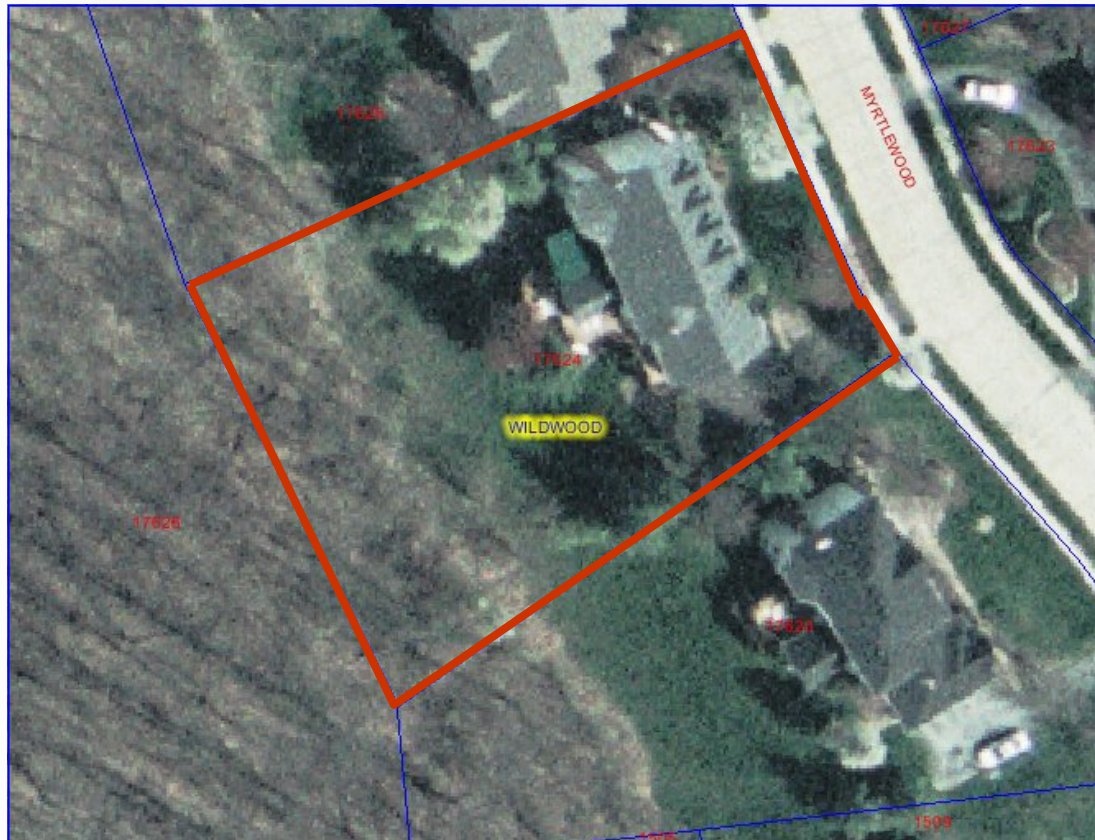
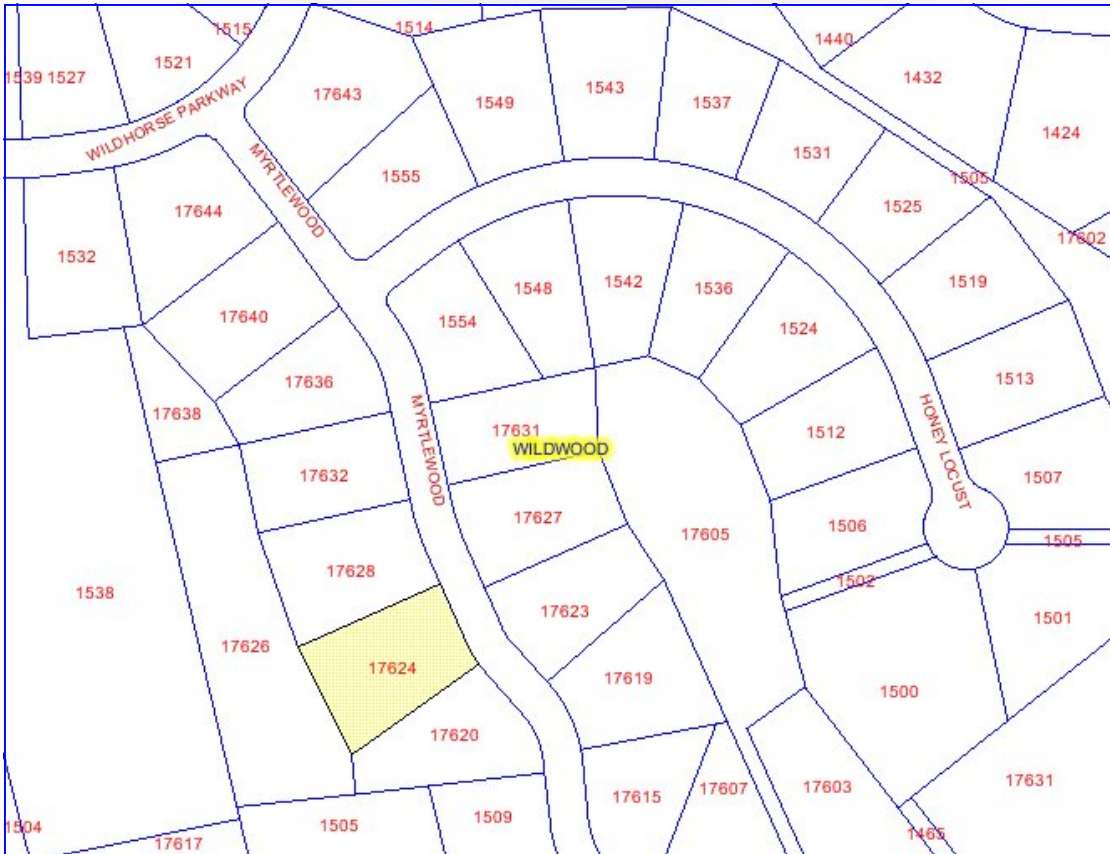
<i>FAMILY ROOM</i>	<i>LIVING ROOM</i>	<i>HEARTH ROOM</i>	<i>DINING ROOM</i>	<i>DEN</i>	<i>KITCHEN</i>	<i>BREAKFAST ROOM</i>
<i>26' X 18'</i>	<i>15' X 14'</i>	<i>16' X 14'</i>	<i>16' X 14'</i>	<i>N / A</i>	<i>12' X 11'</i>	<i>15' X 11'</i>

<i>MASTER BEDROOM</i>	<i>GUEST BEDROOM</i>	<i>GUEST BEDROOM</i>	<i>GUEST BEDROOM</i>	<i>GUEST BEDROOM</i>	<i>RECREATION ROOM</i>	<i>LAUNDRY ROOM</i>
<i>16' X 15'</i>	<i>15' X 13'</i>	<i>16' X 12'</i>	<i>16' X 10'</i>	<i>17' X 12'</i>	<i>34' X 18'</i>	<i>8' x 8'</i>

<i>CONSTRUCTION</i>	<i>AGE</i>	<i>HEATING</i>	<i>COOLING</i>	<i>FIREPLACES</i>	<i>LOT DESCRIPTION</i>	<i>AMENITIES</i>	<i>TAXES</i>	<i>ASSOCIATIONS FEES</i>
<i>BRICK VENEER DECCRTV FRAME</i>	<i>15</i>	<i>ELECTRIC: DUAL FORCED AIR ZONED</i>	<i>ELECTRIC: CENTRAL, CEILING FANS ZONED</i>	<i>1 GAS</i>	<i>CUL-DE-SAC BACKS TO TREES & OPEN GROUND WOODED STREET LIGHTS SIDEWALKS</i>	<i>CLUB- HOUSE POOL TENNIS UNDER- GROUND UTILITIES</i>	<i>\$8,194 2010</i>	<i>\$650.00 YEARLY</i>

<i>COUNTY</i>	<i>UTILITIES</i>	<i>SCHOOLS</i>
<i>ST. LOUIS</i>	<i>ELECTRIC, PHONE, GAS PUBLIC WATER & SEWERS</i>	<i>HIGH SCHOOL: MIDDLE SCHOOL: ELEMENTARY: LAFAYETTE ROCKWOOD VALLEY CHESTERFIELD</i>





The information contained herein has been supplied to us by the owner of this property or by a third party. Tom Shaw Realtors does not guarantee its accuracy and recommends buyers or tenant to verify all information herein and to obtain a full boundary survey before buying said home or property. **PRICES AND SPECIFICATIONS ARE SUBJECT TO CHANGE WITHOUT NOTICE**