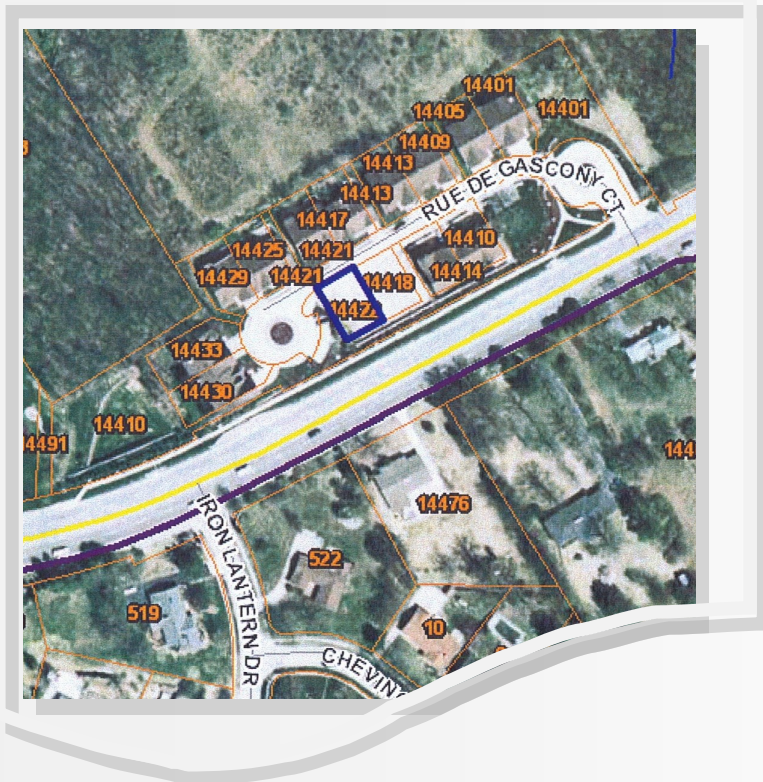


# *14422 Rue De Gascony Ballwin, Mo. 63011*

***SALE PRICE: \$105,000***



*Contact*

*Cathy Shaw-Connely  
(636) 346-4960  
squawky1@aol.com*

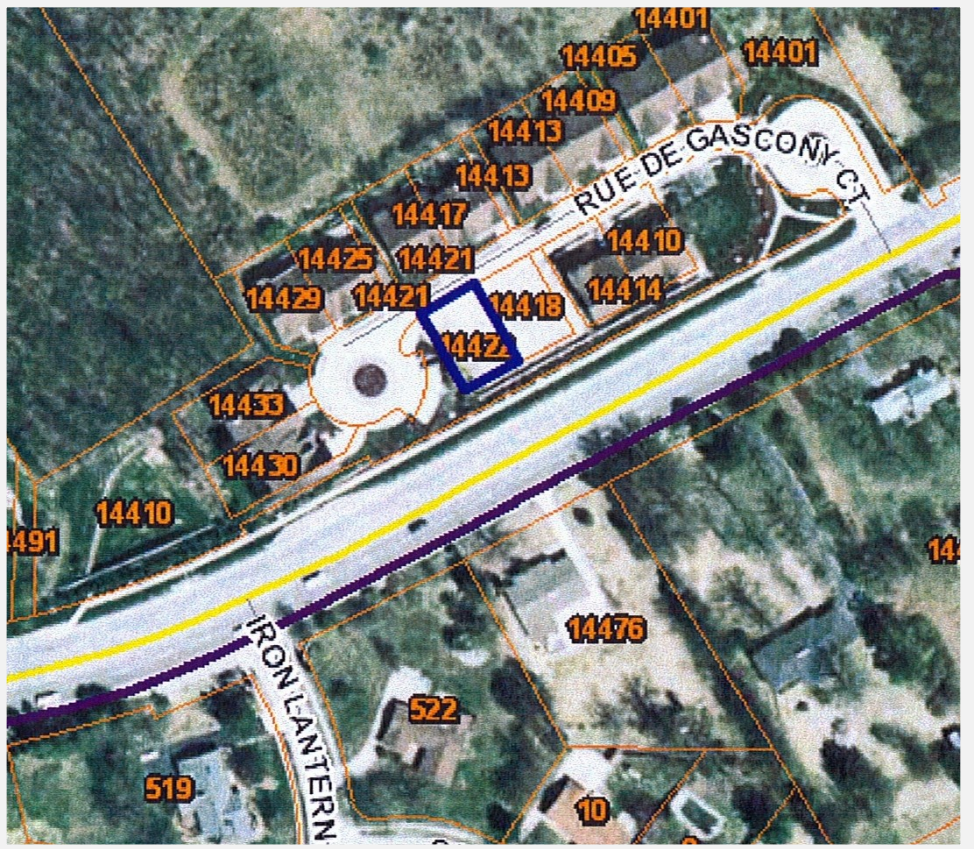
This is one of two lots left in Rue de Gascony subdivision. The lots may be sold separate or together. This is a build a subdivision approved residential structure. In walking distance form restaurants, shops, and banks. Just minutes away from Hwy 64/40 Other lot is 14418 Rue de Gascony MLS # 12007930

**DIRECTIONS:** *Clayton Rd. just west of Schoettler Rd. & Henry Rd. right side*



200 Long Road ♦ Suite 160 ♦ Chesterfield, Missouri 63005

Office: (636) 532-1922 ♦ Fax: (636) 532-0222 ♦ info@shawrealtors.com ♦ www.shawrealtors.com



### Area Information / Property Description

County	St. Louis
Subdivision	
School District	Parkway West
High School	Parkway West
Middle School	Parkway West
Elementary School	Claymont
Lot Size	<b>55 x 77 x 55 x 79</b>
Lot Description	Level Lot
Street Access	Public
Taxes	\$1,022    2010
Associations Fees & Restrictions	
Utilities	Water: Yes Electric: Yes Phone: Yes Sewer: Yes

The information contained herein has been supplied to us by the owner of this property or by a third party. Tom Shaw Realtors does not guarantee its accuracy and recommends buyers or tenant to verify all information herein and to obtain a full boundary survey before buying said home or property. **PRICES AND SPECIFICATIONS ARE SUBJECT TO CHANGE WITHOUT NOTICE**